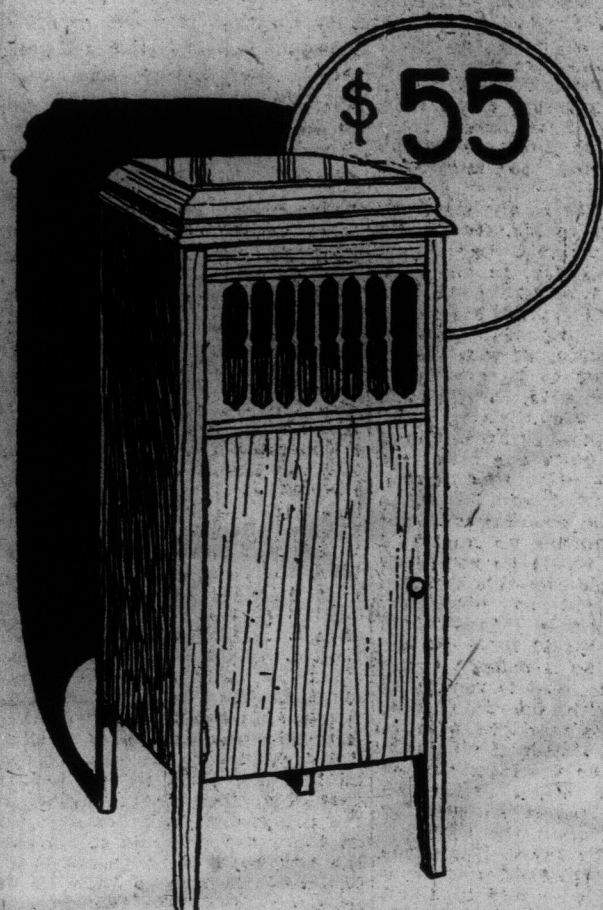


SAVE TIME.
When ordering from more than one Department in the Store, write or telephone to the City Order Department, Adelaide 3474, and give complete order.

EATON'S DAILY STORE NEWS

Shop in the new Groceries, and by carrying your own parcels save money.—Basement, House Furnishing Building.

THE SYMPHONY IS A PHONOGRAPH IN WHICH YOU CAN HAVE EVERY CONFIDENCE



As to Tone, Appearance, Service and Value

The "Symphony" is made and the parts are assembled in the EATON factory, consequently the middleman's profit does not figure in the cost of the "Symphony."

Second—as good phonograph music depends upon a perfect motor, which must meet not only the demands of the laws of mechanics, but also the rigid laws of music.

Must be precise and delicate in its operation, and yet able to endure the handling of the most inexpert.

Must turn the turn-table with perfect rhythm, without the slightest shade of hesitation or the music would be thrown entirely off key.

Must be perfect as to speed, regulation and silent in operation.

So the motor in the "Symphony" is one of the best that money can buy.

And lives up to the above demands. You'll find it silent in operation, steady in regulation and sturdy in construction.

Next, the "Symphony" has a self-stopper, a sound regulator, shelves in the cabinet for records or album. And one of the largest sound boxes and tone arms procurable.

The "Symphony" reproducer and the tone arm are designed to play all makes of disc records—two extra sapphire points can be procured for that purpose.

Furthermore, the "Symphony" has a mahogany cabinet in square design, that is good-looking and should prove quite an appropriate addition to the most select collection of furniture. Remember, in the "Symphony" you get exceptional value—splendid tone and satisfaction—and a machine that is quite striking and appealing, for \$55.00. Ask about it in the Phonograph Section—Fifth Floor. Those in attendance will gladly demonstrate its many qualities to you.



1869 GOLDEN JUBILEE 1919
"Shorter Hours" "Better Service"
STORE OPENS AT 9:30 a.m., CLOSING AT 5 p.m.
CLOSING ON SATURDAYS AT 1 P.M.
NO NOON DELIVERY ON SATURDAYS

—Fifth Floor.

THE "DOCTOR" IS AN ANTISEPTIC BOOT

With Double Leather Goodyear Welted Soles, Dark Brown Kip Uppers, Leather Lining and Bellows Tongue



\$8.00

It's a boot that is dry in wet weather—the double soles, excellent stitching and viscolized treatment which every "Doctor" undergoes assures that fact. It's a boot that is warm in cold weather, because of two features—one is that the inside has been treated with a special dressing for the purpose of keeping the foot at an even temperature and allaying perspiration. The other feature

is that a layer of felt is between the insole and outsole, which acts as a sort of shock absorber and non-conductor. It's a shoe that is specially made for EATON'S, and one well worth trying out, if you want a sturdy, good looking shoe that will keep the feet dry and warm. Sizes 6 to 11. At the moderate price of \$8.00.

The "Gold Cross" is the Boot with the cushion sole; in other words, an inner pad of felt and cotton, covered with soft leather, forms a sort of inner sole. Has a "wearproof" lining and Goodyear welted slip sole. Sizes 6 to 11. Price, \$6.00.

At \$11.00 are Black Kid Laced Boots, built on the straight last, with toecap and Goodyear welted leather soles. Sizes 6 to 11. Price \$11.00.

At \$12.50—Tan Russia Recede Shape Laced Boots, with Goodyear welted leather soles, toecap. Widths A to E. Sizes 6 to 11. Price, \$12.50.

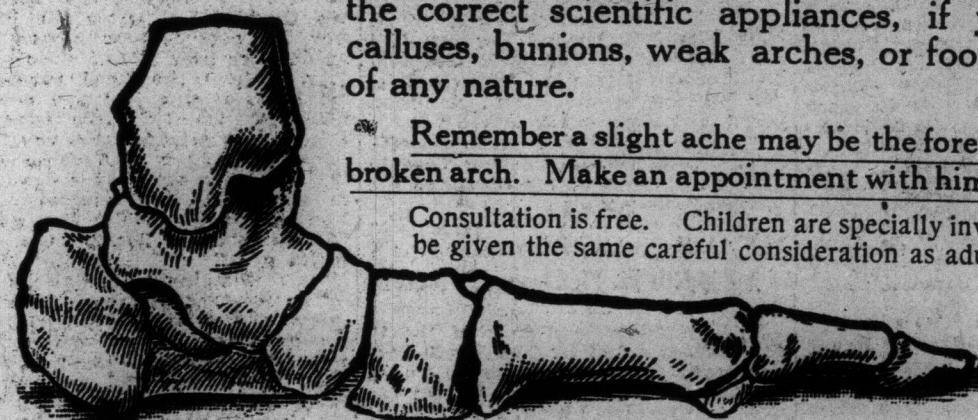
You Are Reminded That in the Boot Section, Second Floor

There is a Foot Specialist

Who will be glad to give advice and prescribe the correct scientific appliances, if you have calluses, bunions, weak arches, or foot troubles of any nature.

Remember a slight ache may be the forerunner of a broken arch. Make an appointment with him by phone.

Consultation is free. Children are specially invited and will be given the same careful consideration as adults.



Another Splendid Pair of Boots for Winter Wear at \$8.00

Are of good looking Black Box Kip, in a rather wide, comfortable shape, soles are Goodyear welted and of the double type—assuring long wear; are leather lined throughout, and in sizes 6 to 11. Price, \$8.00.



—Second Floor, Queen St.

THE T. EATON CO. LIMITED

Make
ave,
17

advise you as
re using.

our needs; it
ery Test regu-
all makes of

ecessary to put
winter driv-
during the

Battery Stor-
expert storage

G CO., Ltd.
ONTO, ONT.