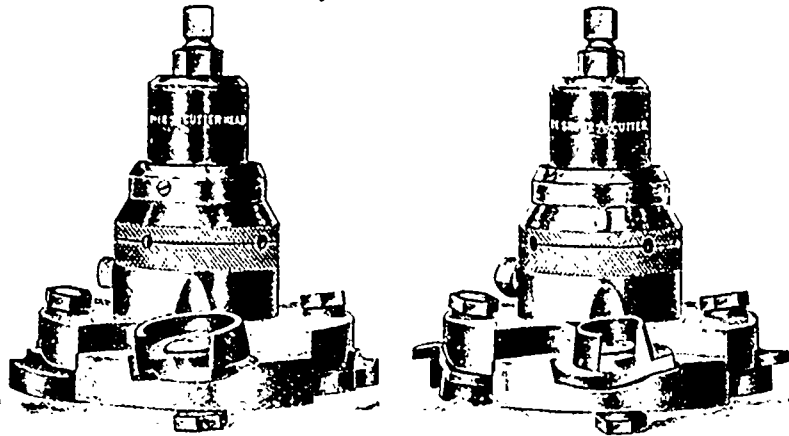


The Shimer Cutter Heads

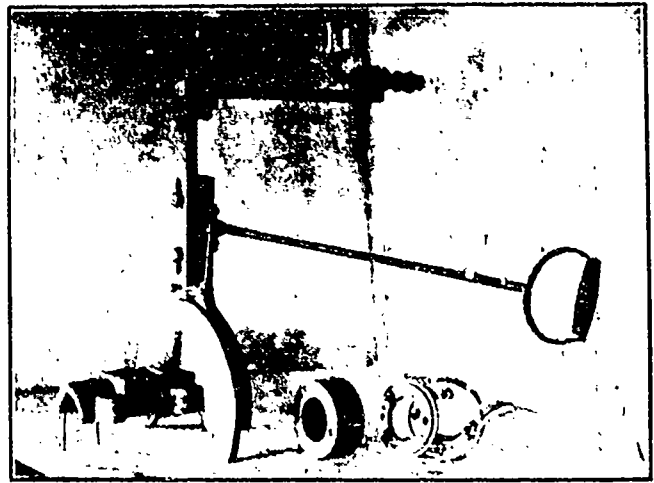
WITH EXPANSION



Are built from forgings of Steel and finished throughout in the solid metal. This insures accuracy, durability and perfect mechanical adjustments.

They are appreciated by the user because they hold up under the severest tests. They cut easily all kinds of hard, knotty and cross-grained lumber. If you make single tongue and groove Flooring, Ceiling and Wainscoting, buy THE SHIMER CUTTER HEADS and you will have no disappointment. Address

SAMUEL J. SHIMER & SONS
Milton, Pennsylvania



"KILLAM'S TANDEM CIRCULAR SAW MILL"

The attention of Manufacturers of Lumber is called to the above named latest and best method of sawing lumber.

The following advantages are obtained:

Lower cost of installation than any other method which will saw an equal number of superficial feet in a given length of time.

Smaller expense in operation than producing lumber at a lower cost per thousand feet than any other method.

Requires no more help to operate it than any well equipped Circular Saw Mill.

Lumber has been sawn better and more accurately cut by this method than by any other now in use.

The Killam Tandem Circular Mill requires no more skilled men to operate it than is required to operate the ordinary Circular Mill.

If solid saws are used, the larger one, when worn down can be used for the smaller one thus saving expense for saws.

No difficulties in handling or setting by this machine and no delays.

No time is lost in setting for any thickness from the cut of stationary saw up to six inches.

This machine takes the place of a resaw in a mill and only requires a floor space of 6 ft. x 6 ft.

Also takes the place of a Twin Circular Mill that is now used for slabbing and this machine will side as much lumber as any Twin Circular, thus saving the expense of a resaw and men to operate the same.

This machine is so cheap that any manufacturer of lumber can well afford to have one, for it will pay for itself in a short time.

Will cut 50 per cent. more lumber than the Circular Mills now in use.

MANUFACTURED BY OXFORD FOUNDRY & MACHINE COMPANY, OXFORD, N. S.

REFERENCE.

M. L. KILLAM, TRURO, N. S.

Dear Sir.—It gives us great pleasure to testify to the value of your Tandem Circular Saw Mill. It has paid for itself twice over during the six months we have run it. It requires no more help to operate it and the lumber is more evenly sawn. It does all that you claim it will and we would recommend it to any manufacturer who wishes to make more and better lumber with the same help as with the Single Circular Mill. Wishing you success, we are
Dec. 31, 1903.

Yours very truly,
DICKIE & McGRATH Tuskett, N. S.

ADAM HALL, PETERBOROUGH, ONTARIO
CANADA

MANUFACTURER OF

STEEL RANGES

For Lumbermen's and Railway Camps, Boarding Houses and Hotels

The Lumberman Heater

36 Inch Lumberman Heater
42 Inch Lumberman Heater
48 Inch Lumberman Heater

This Heater is used in heating Lumbermen's Camps, Boarding Houses, School Houses and large buildings.

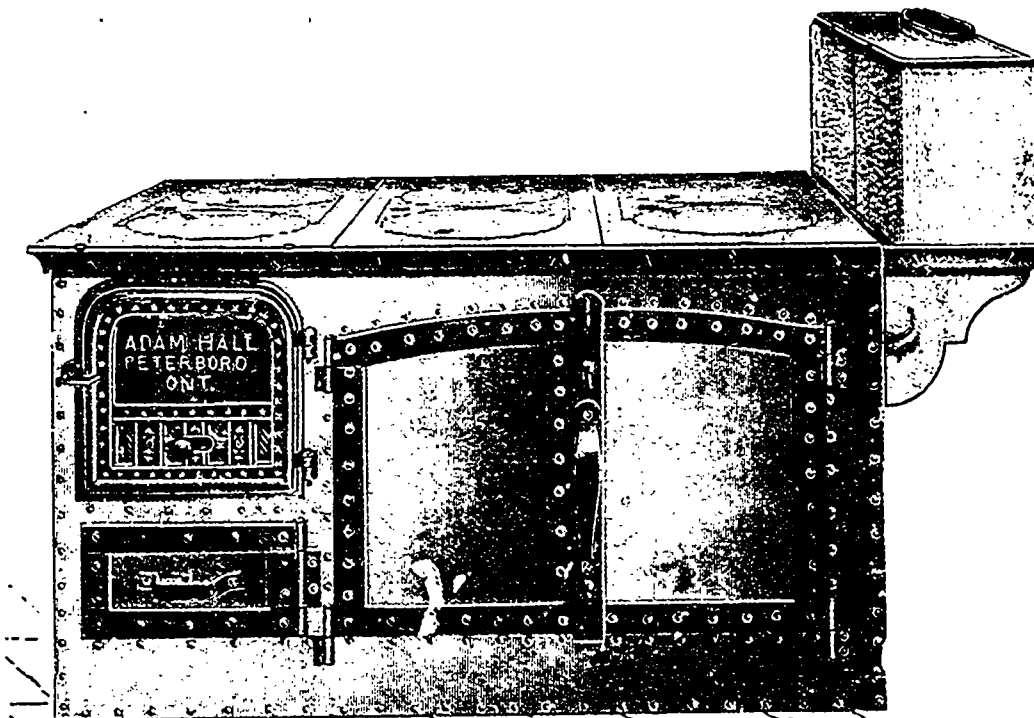
The body of the Heater is made of Heavy Boiler Plate. The ends are made of Heavy Cast Metal, with a large Fire Door.

It is a perfect Heater, and very durable.

We have been manufacturing Steel Ranges and Heaters for Lumber Camps for the past Twenty-four Years, and have supplied the wants of nearly all the Lumbermen in Quebec, Ontario and Manitoba—they are unexcelled for Baking and Cooking, and are strong and durable.

This No. 10-25 Range with 25 Gallon Copper Reservoir is the one we sell the most of, owing to the convenience of having a supply of hot water at all times. Will cook for 50 to 60 men. Weighs 450 pounds.

Write for Catalogue and Price List.



Lumbermen's Six Pot Hole Range with Reservoir.