

**MORITZ
KÖNIG,**

Formerly with Herman
König,

**Violin
Maker**

Dealer in all kinds of
Musical Instruments
and Strings.

1671 Third Ave.,
NEW YORK.

Between 3rd and 4th
streets.

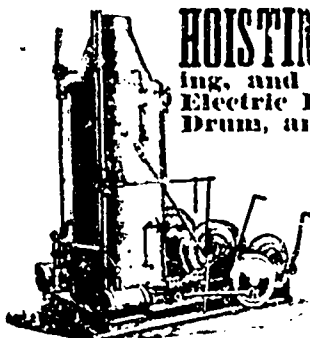
GEO. C. CRANE,

Manufacturer and Importer of

Piano Covers & Piano Scarfs,

97 Fifth Avenue, NEW YORK.

samples sent on Memorandum for Inspection.



Contractors' Engine.

HOISTING MACHINERY

for Mining, Quarrying,
Coal Handling, Pile
Driving, Bridge Build-
ing, and for general Contractors' use. Improved
Electric Hoists, Single and Double Patent Friction
Drum, and

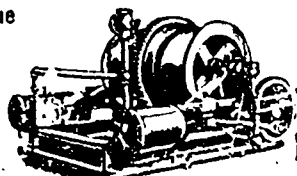
Suspension Cable Ways.

Send for Illustrated Catalogue
giving full description, etc.
Correspondence Solicited.

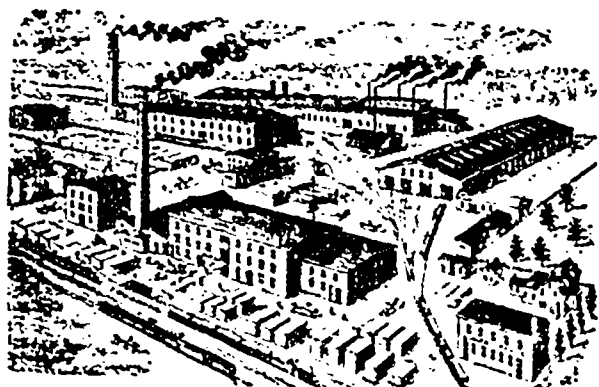
W. A. Crook & Bro's Co

117-123 Poinier St.,

NEWARK, N. J.



Coal Hoisting Engine



*Car Works,
Machine Works,
Foundry,
Planing Mills,
Saw Mills.*

RHODES, CURRY & Co., Limited,
AMHERST, N. S.

DIXON'S

PURE FLAKE GRAPHITE is worth
its weight in gold to any Engineer
or Machinist.

Send for Pamphlet and Sample.—No charge.

JOS. DIXON CRUCIBLE CO.,
JERSEY CITY, N. J., U. S. A.

In respect to the Russian wheat crop, it must be borne in mind that the winter wheat crop occupies a position of about 35 to 40 per cent of the product, while from 60 to 65 per cent is spring wheat. The proportions of the crop are reversed as compared with the United States. This would indicate that if the winter wheat crop is seriously injured the effect on the total product is not as serious as when the spring wheat crop is injured. Last year the total wheat crop in Russia was 356,368,000 bushels, of which 101,840,000 bushels were winter wheat, against 103,216,000 bushels the preceding year. A loss of 10 to 15 per cent would be important in the winter wheat product, but would not be a very serious factor in the total crop.

This is perhaps the reason why that with all the advices of bad condition in the winter wheat section of Russia, there has been no more anxiety felt regarding the output next summer. If, on the other hand, the reports were serious regarding rye, it would be a very important matter as the rye crop is nearly twice as large as the wheat crop and most of it is winter grain.

The Whitlaw Trading Co., a well-known wholesale produce firm of Brandon are establishing a creamery at the Wheat city to be known as the Brandon central creamery. They have secured a uniform rate for the shipment of cream from any point within 150 miles and have already received assurances of support from a number of points where local creameries have not been established.

LOUIS KÖNIG,

SUCCESSOR TO

HERMANN KÖNIG,

Violin Maker

Importer of German and
Italian Strings.

*All kinds of Stringed Instru-
ments Repaired.*

No. 387 BOWERY, NEW YORK,

Between 5th and 6th Streets.

WM. BUTLER

Manufacturer of Specialties,

*Die Maker and
Machinist,*

FREEMAN'S BLOCK,

COLBORNE ST., JAMES ST.,

Hamilton, Ont.

I am prepared to manufacture Canadian
and American Patented Specialties
in Iron, Steel and Brass.

C. H. McIntire. —THE— **J. H. Wesler.**

McIntire Mfg Co.,

Electrical Manufacturers,

CONTRACTORS,

And Dealers in EVERYTHING ELECTRICAL

13 and 15 Franklin St.,

NEWARK, N. J.

Light Plants, Motors, Fans, Lamps, Bat-
teries, Bells, Annunciators, Burglar
Alarms, Heat Regulators, Testing
Instruments, House Wiring,
Repairing.