

# GUARD AGAINST BOILER EXPLOSIONS

An efficient  
staff of  
Trained  
Inspectors

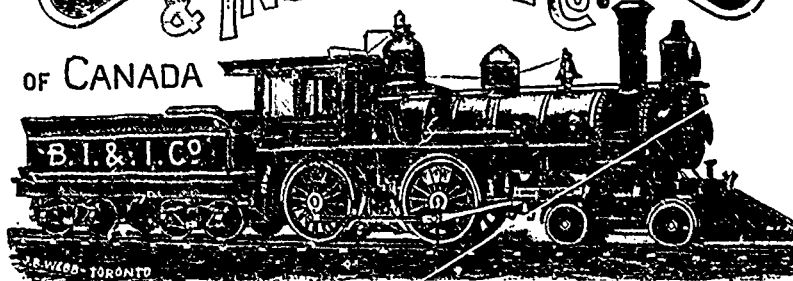
Prevention  
of Accident  
our  
chief aim

JOHN L. BLAIKIE ESQ.  
PRES.

EW. RATHBUN ESQ.  
VICE-PRES.

**THE BOILER INSPECTION  
& INSURANCE CO.**

OF CANADA



CONSULTING ENGINEERS

G. C. ROBB CHIEF ENGINEER  
A. FRASER SEC. TRES.

HEAD OFFICE TORONTO

When were  
your boilers  
last  
inspected?

Are they in  
safe  
working  
order?

J. W. GRIER & MUDGE, Agents, O. E. GRANBERG, Resident Inspector, 92 St. Francois-Xavier Street, MONTREAL

## J. C. WILSON & CO.

(ESTABLISHED 1870)

We Manufacture specially  
for Hosiery, Woolen  
and Cotton Mills

### GLAZED MANILLAS

in the following:

Size 24 x 36 - - Weight 60 lbs.  
" 30 x 40 - - " 100 "  
" 34 x 48 - - " 150 "

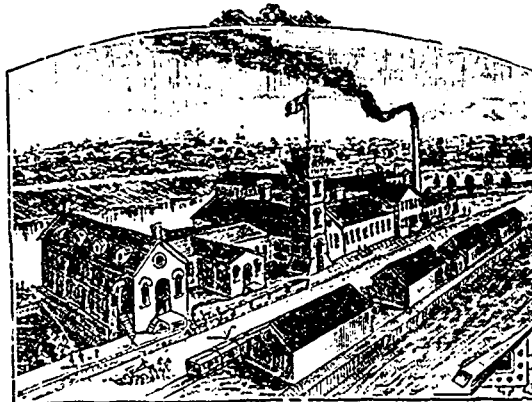
AND

### Fine Jute Hosiery Manillas

Any Size or Weight to order

Samples on application.

Red Express  
Brown Wrappings  
Hardware



Lachute Paper Mills, LACHUTE, P.Q.  
(CAPACITY 10 TONS DAILY)

Rope Manillas  
Tissue Manillas  
Fine Jute Manillas  
Unbleached Manillas

## Paper Makers

Manufacturers and  
Printers of

PATENT MACHINE

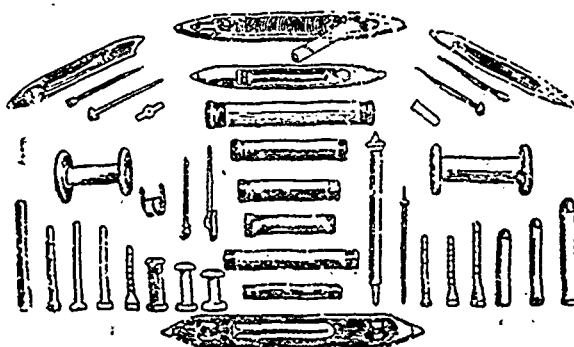
Paper Bags Flour Sacks  
Envelopes  
Shipping Tags  
Toilet Paper and  
Folding Paper Boxes

Wholesale Manufacturing Stationers

Lithographers and Printers

698, 700 and 702 Craig Street . . . Montreal

## Lachute Shuttle and Bobbin Works



We are the largest Shuttle  
Manufacturers in Canada.

Slubbing, Roving and all kinds  
of Bobbins and Spools for  
Cotton and Woolen Mills

We have always on hand  
a large stock of  
Thoroughly Seasoned  
Lumber.

Orders solicited and all work guar-  
anteed to give satisfaction.

**JOHN HOPE & CO.**  
LACHUTE, P.Q.

## R. E. THOMAS PRINGLE

Constructing and Superintending  
Electrical and Mechanical Engineer

Contractor for complete Electric Light and Power  
Plants. Special attention given to estimates, plans,  
specifications and supervision of Electrical and  
Mechanical Work. Telephone No. 2651

Room 67, Imperial Building  
107 St. James Street, MONTREAL

## Alliance Assurance Co.

Established 1824 Head Office, London, Eng.  
SUBSCRIBED CAPITAL, \$35,000,000.

RT. HON. LORD ROTHESCHILDE, Chairman  
ROBT. LEWIS, Esq., Chief Secretary

Branch Office in Montreal:  
127 St. James Street, Montreal.  
G. H. McHENRY, Manager.