

when in succession as shown in Fig. 1606, there is no excuse for not discovering and destroying them.

From these cocoons the reddish-brown moths emerge in late June and early July and soon lay the eggs which complete the life cycle. These moths are quite large, as shown in Fig. 1607, and are easily distinguishable from all but a few closely related species, by the two oblique, nearly parallel bands of white crossing the fore wings.

quite similar to the apple tree tent-caterpillar in appearance or habits and which may do damage in the orchards, though not usually so abundant as these species. The forest tent-caterpillar (*Clisiocampa disstria*) ordinarily feeds in the woods upon the maple : but frequently mingles with its relatives in the orchards and is distinguishable from them only by a few minor characteristics. The egg-masses, are similarly placed but are cut off squarely at the ends instead of

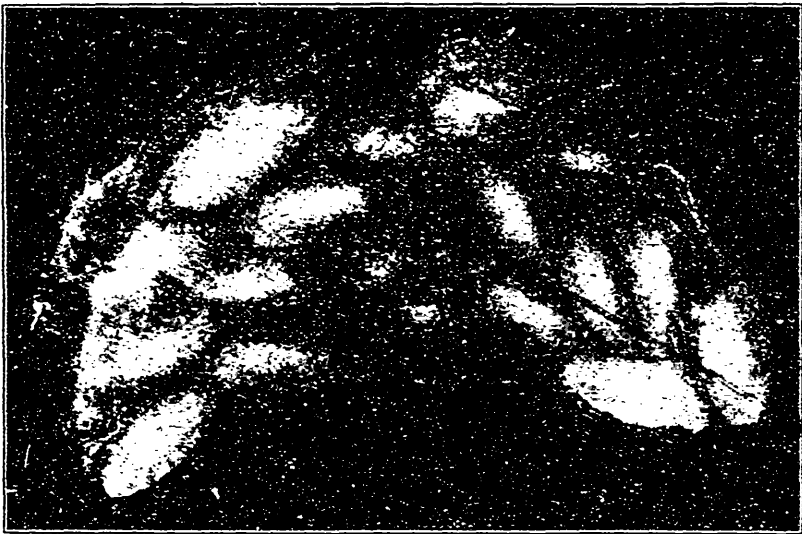


FIG. 1606.—COCOONS OF THE APPLE-TREE TENT-CATERPILLAR. Natural size (Original.)

Most of the measures to be taken against this pest have already been indicated but may be concisely summarized as follows : Protect and encourage birds ; destroy the egg-hands and cocoons and reward the children for collecting them ; burn out or crush the nests while the caterpillars are in them ; spray the trees with Paris green, and last, but not least, see that wild cherry trees, crabapple trees and neglected apple trees along the roadsides are kept free from the pests or cut down.

There are two other insects which are

being somewhat sloping as are those of the apple-tree caterpillar. This is caused by the eggs in the end rows of the bunch, as well as those in the center, being placed upright ; while the end rows of the first described masses are inclined. The tents are more delicate and less conspicuous and are frequently lacking ; the caterpillars have a row of diamond-shaped white spots along the back instead of a single white line ; and the parallel bands across the wings of the moths are dark rather than white and the space between the lines is darker.