

# ARMSTRONG & MORRISON

MANUFACTURERS OF

The largest Sheet Metal Works on the  
Canadian Pacific Coast.



RIVETED STEEL PIPE, ORE CARS,  
BUCKETS, STEEL WHEELBARROWS,  
MONITORS, CONVEYORS, ETC.

~~~~~CORRESPONDENCE SOLICITED~~~~~

715 Heatley Avenue,

VANCOUVER, B.C.

## F. ADRIAN MEYER BROKER

Sub-Collector of Customs. . . .

Deputy Collector of Inland Revenue.

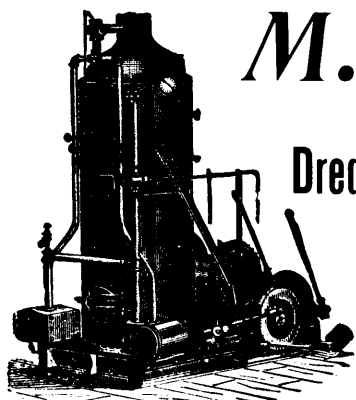
Notary Public.

VERNON, B.C.

## MICHIGAN COLLEGE OF MINES.

Supported by the State of Michigan. Practical work. Elective system.  
Special advantages for men of age and experience. For catalogues address

DR. M. E. WADSWORTH, President,  
Houghton, Michigan



# M. BEATTY & SONS,

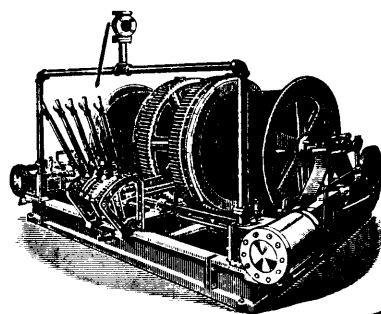
WELLAND, ONTARIO,

Dredges, Ditchers and Steam Shovels,

For Dredging, Ditching, Dyking, Gold Mining, Etc.  
Of various styles and sizes to suit any work.

Mine Hoists, Hoisting Engines, Stone Derricks, Horsepower  
Hoisters, Suspension Cableways, Submarine Rock  
Drilling Machinery, Gang Stone Saws, Centri-  
fugal Pumps for Drainage Works, Pump-  
ing Sand, Gold Mining, Etc.

We also furnish WIRE ROPE at Lowest Prices.



# Joshua Hendy Machine Works,

Nos. 38 to 44 Fremont St., SAN FRANCISCO, Cal., U.S.A.

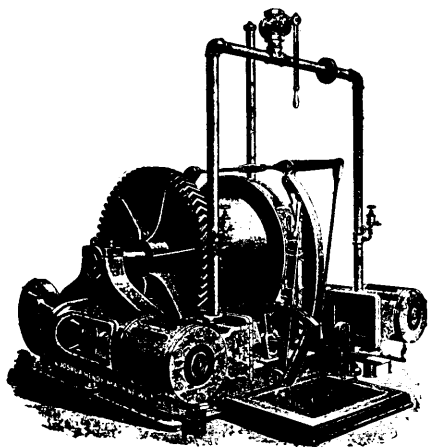
—MANUFACTURERS OF AND DEALERS IN—

Hydraulic <sup>N</sup> Quartz Mining <sup>N</sup> Milling Machinery

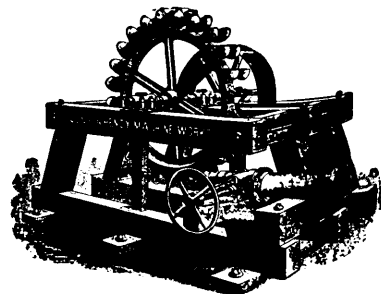
—COMPRISING—

HYDRAULIC GIANTS,  
WATER GATES,  
SHEET IRON and  
STEEL PIPE,  
STAMP MILLS,  
ORE CRUSHERS,  
ORE FEEDERS,

CONCENTRATORS,  
SMELTERS,  
HOISTING and  
PUMPING PLANTS,  
SAW MILLS,  
MINE and MILL  
SUPPLIES, Etc., Etc.



HOISTING ENGINE.



IMPACT WATER WHEEL.

Catalogues and Prices Furnished  
Upon Application

123.~

Telegraphic Address, "Waterman. Vanc."

**W. J. WATERMAN,**  
Mining . .  
Engineer,

610 Granville Street,

VANCOUVER, B.C.

## The Mining Journal...

124 pages; Royal 4to;  
17 Full-Page Plates.  
Price, - - - 21s.

PRESENT DAY METALLURGICAL ENGINEERING ON THE RAND  
By John Yates, Associate of the Royal School of Mines, London;  
Fellow of the Geological Society of London; Member of the Feder-  
ated Institute of Mining Engineers. . . With an Appendix on the  
ECONOMICS OF THE TRANSVAAL GOLD MINING INDUSTRY. By Henner  
Jennings, Consulting Engineer to Messrs. Eckstein & Co.

LONDON OFFICE—18 FINCH LANE, E.C.