

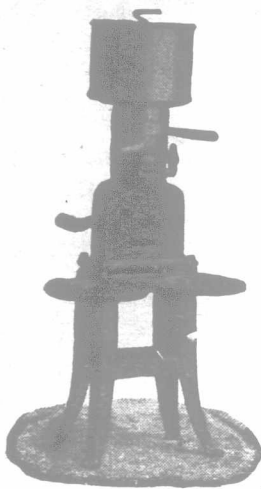
PRO-FAT MOLASSES MEAL

Dried Malt and Molasses for Dairy Cattle and Horses. Malted Corn and Molasses for Hogs, Sheep, Calves and Poultry.

These feeds are both sold at a uniform price of \$28.00 per ton, delivered to any station in Ontario. They are sold on **THIRTY DAYS' TRIAL WITH GUARANTEED RESULTS.** They are the only **COOKED** feeds on the market which make the **PROTEIN AND FAT** wholly digestible. They are fed as a whole ration or part with proportionate results. When a mother lacks nourishment for her new born babe, the medical man invariably prescribes a **MALT PREPARATION**, nothing else will produce the desired results. Our **PRO-FAT WITH MOLASSES** will do the same for cows, horses, sheep and calves which are not thriving, and the price is no higher than ordinary chopped feeds. Dairy men have an opportunity here of procuring a meal, a ton of which is guaranteed to produce greater results than any other feed on the market, manufactured or home grown. Send us the name of the seed merchant in your neighborhood and we will mail you an order to get a ton from him or if he will not handle it, will ship direct to you (with guarantee) on **THIRTY DAYS' TRIAL.** Can anything be fairer than this? Dairy men will never get the **MAXIMUM AMOUNT** of milk from their cows until they use **PRO-FAT** as a part or whole ration. Try it and be convinced. Analysis—Protein 20%, Fat 5%, Fibre 13%.

Feed Pro-fat Molasses Meal and Watch the Milk Flow Increase

The Farmers' Feed Co., Limited
Dept. A, 108 Don Esplanade,
TORONTO, ONTARIO.



We give a **FREE TRIAL** of the

Domo Cream Separator

Think of it! We send this high-grade, easy-turning machine on approval, freight prepaid, to test at our expense. We take all the risk. Prices from \$15 and upwards, about half what you pay for others, and you can be the judge of its merit. Write to-day for circular "A," which gives full particulars of our trial offer, with prices and easy terms of payment. It's **FREE**.

DOMO SEPARATOR CO.

Brighton, Ont.

St. Hyacinthe, Que.

BRAMPTON JERSEYS

Several imported cows and bulls for sale. Canada's Greatest Jersey Herd.

The spring trade is on; we are doing the largest business we ever did, chiefly with our old customers; young bulls and heifers from sires with tested daughters.

B. H. Bull & Son, Brampton, Ont.

Ayrshires and Yorkshires—We now offer at bargain bull calves dropped in July 1912. All bred from (imp.) sire and from either dams with good records, or their daughters either imported or home-bred. Some choice February pigs; also young pigs.

Alex Hume & Co., Menie, Ont.

Stonehouse Ayrshires

Of choicest imported stock and with imp. sires and dams. I am offering young cows, 3, 4 and 5 years of age; a grand bunch of imp. yearling heifers, and a particularly good pair of young bulls.

L.-D. Paone.

HECTOR GORDON, Howick, Que.

STOCKWOOD AYRSHIRES

This herd is now headed by White Hill Free Trader (imp.) No. 33273. champion bull at Sherbrooke; also headed the 1st-prize aged herd. All ages for sale. Satisfaction guaranteed. D. M. WATSON, St. Louis Sta., Que. Telephone in house.

GLENHURST AYRSHIRES

ESTABLISHED OVER 50 YEARS AGO, and ever since kept up to a high standard. We can supply females of all ages and young bulls, the result of a lifetime's intelligent breeding; 45 head to select from. Let me know your wants. JAMES BENNING, WILLIAMSTOWN P. O. Summerstown Sta., Glengarry Co.



Questions and Answers.

Miscellaneous.

Beef-Ring.

Would you kindly give me a chart of a 24-share beef-ring, and the pieces that go together, as we are starting one?

H. G.

Ans.—Can any of our readers supply a drawing indicating a side of beef cut into 24 shares (12 cuts to the side)? We have those for 20 shares and 16 shares, but not for 24 shares.

Brine for Cucumbers.

Could you kindly advise me how to brine cucumbers in large quantities, for sale, as I would like to grow them, but don't like to take the time it requires to draw them green every few days to a factory?

INQUIRER.

Ans.—It would scarcely be advisable, under most conditions, to make pickles on a large scale at home. The factory, even though it takes time, is the place to get them pickled. Why not grow enough to make a load each trip. You will have to haul them out before they can be marketed, whether pickled at home or at the factory. It is a very difficult matter to put cucumbers in brine and keep them from losing their color, and cucumbers which have lost color would find very slow sale on the market. While it takes time to deliver them in the summer, on the whole it is advisable.

Ground Limestone.

We put lime upon land. There are thousands of tons of limestones in fields, and in heaps, within an hour's draw from certain fields that require lime. Would these stones, ground to powder, serve the purpose as well as burned lime, for treating soil that we know to be in need of lime? If not, why not? Do you know of any machine that would crush limestone into powder, worked by a gasoline engine, say, 6- or 8-horse power? Where can it be had, and at about what cost?

A. H. S.

Ans.—No doubt the ground limestone would serve the purpose well. Of course, it depends to some extent upon the ingredients in the limestone, and it should always be finely ground. We do not know where such machines are manufactured. Manufacturers should advertise through our columns.

Sun-Dial.

Can I purchase a sun-dial to place, or fix, upon a millstone? What effect do trees or other obstructions have upon a sun-dial?

F. M.

Ans.—A sun-dial on a level millstone is a wooden or metallic plate, bearing a shadow-caster parallel to the axis of the earth. The plate is not necessary, as the shadow-caster may be cemented in or on the stone. Any maker of scientific instruments can set up a shadow-caster on a metallic plate, and engrave the lines to correspond to the shadows at each hour, from sunrise to sunset, in the longest, and every other day of the year, if you give him your latitude. It can be made here in London, Ont. After getting the plate, you still have to solve the problem of placing it on the stone in such a way that the shadow-caster will point exactly north. You cannot do this with a compass on account of the magnetic declination which, in the distance from Montreal to Chicago, amounts to nearly 15 degrees. An elementary knowledge of astronomy and mathematics will qualify one to find the due north and south line, but without that knowledge it can be determined with the aid of a watch keeping correct time, an almanac giving the daily equation of time (the Canadian almanac does this), and a knowledge of the longitude to make the correction necessitated by the fact that the watch is keeping standard time. Indeed, in using a sun-dial, after it is properly set, it is necessary to know, and be able to supply, the distinctions between sun time, mean time, and standard time. The first two are the same on April 15, June 15, Sept. 1, and Dec. 24; on all other days they are different, sometimes by more than a quarter of an hour. The daily differences are given in the Canadian almanac. The shadow-caster, or style, as it is technically called, can not throw a line on the plate while a leafy tree or other object prevents the sun's rays from falling on it.

J. D.



Look for this Trade Mark when you buy paint.

It means painting as it should be—painting that will look the best and wear the longest under all weathers and hard usage.

This Trade Mark is backed by 76 years of world wide paint experience—it's the sign of

MINERVA PURE READY PREPARED PAINT

Perhaps the last job blistered, cracked or peeled—because the paint was not perfectly made.

Try Minerva Paint this time.

The Perfect incorporation of the Minerva ingredients produces a paint with great covering capacity—while its elastic properties prevent peeling off, blistering or cracking, insuring long life, thus putting off the necessity of repainting for the longest time—meaning economy to you.

There's a Minerva Paint, Enamel or Varnish for every purpose.

If your dealer cannot supply you, write us.

PINCHIN, JOHN-SON & CO.
(Canada) Limited
Toronto - Ont.

"It's so easy to paint with Minerva"



CATTLE AND SHEEP LABELS

Size	Price doz.	Fifty tags
Cattle	75c.	\$2.00
Light Cattle..	60c.	1.50
Sheep or hog..	40c.	1.00
No postage or duty to pay. Cattle sizes with name and address and numbers; sheep or hog size, name and numbers. Get your neighbors to order with you and get better rate. Circular and sample mailed free. F. G. JAMES, Bowmanville, Ont.		

For Sale—Jersey cows and heifers and bulls for exportation. All pedigree and Herd-book stock. For further particulars apply to A. T. SPRINGATE, Breeder and Exporter, Gorey, Jersey, Europe.



Camp Rock Salt, \$10.00 for ton lots, f.o.b. Toronto
Toronto Salt Works, 128 Adelaide Street E.
J. J. CLIFF, MANAGER, Toronto Ont.

Ayrshires

Last chance. No females for sale, but still have a few bulls, sired by Woodroffe Comrade whose first heifer in milk gave 11,392 lbs. milk, 480 lbs. butterfat in year; prices right. H. C. HAMILL, Box Grove, Ont. Locust Hill, C.P.R. Markham, G.T.R. and L.D. Phone.

Evergreen Stock Farm 4 bulls, 12 mos. old, from officially backed ancestors, running from 18½ lbs. at 3 yrs. to 22 1-3 lbs. as matured cows, and on sire's side from 24 6-10 to 29 lbs. of butter in 7 days. Write, phone, or come to F. E. Pettit, Burgessville, Ont.

Maple Hill Holstein - Friesians—Special offering: My junior herd bull, Choicest Canary, son of Nannet Topsy Clothilde 30.23 lbs.; also choice bull calves. G. W. CLEMONS, R.R. No. 2, St. George, Ont.

When writing please mention The Advocate