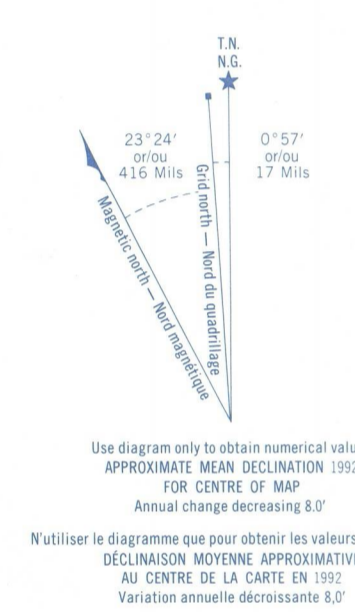


Military users, refer to this map as:
SERIES A 781 SERIE
MAP 12 G/1 & 2 CARTE
Référence de cette carte pour usage militaire: ÉDITION 4 M.C.E. ÉDITION

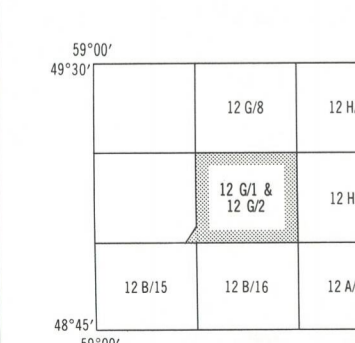
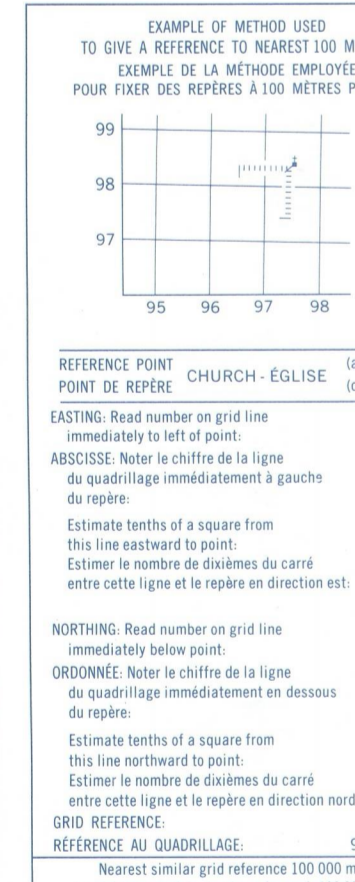
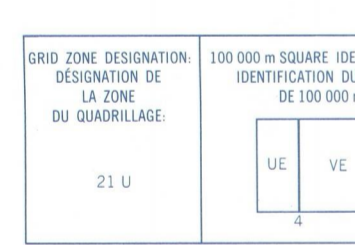


METRIC/MÉTRIQUE

METRIC/MÉTRIQUE



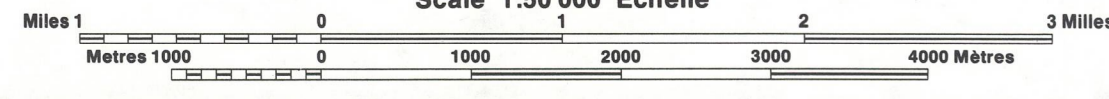
ONE THOUSAND METRE
UNIVERSAL TRANSVERSE MERCATOR GRID
QUADRILLAGE UNIVERSEL TRANSVERSE DE MERCATOR
DE MILLE MÈTRES



PRODUCED BY THE CANADA CENTRE FOR MAPPING,
DEPARTMENT OF ENERGY, MINES AND RESOURCES
INFORMATION CURRENT AS OF 1996. PUBLISHED IN TWO
COPIES MAY BE OBTAINED FROM THE CANADA MAP OFFICE,
DEPARTMENT OF ENERGY, MINES AND RESOURCES,
OTTAWA, OR YOUR NEAREST MAP DEALER.
© 1999, HER MAJESTY THE QUEEN IN RIGHT OF CANADA,
DEPARTMENT OF ENERGY, MINES AND RESOURCES.

BAY OF ISLANDS
NEWFOUNDLAND TERRE-NEUVE

Information concerning bench marks and horizontal survey monuments can
be obtained from Geomatics Service, Canada Centre for Mapping, Ottawa.
CONVERSION SCALE FOR ELEVATIONS
Metres 30 20 10 0 100
Feet 100 50 0 50 100 150 200 250 300 350 400 450 500 550 600 650 700 750 800 850 900 950 1000
ELEVATIONS IN METRES ABOVE MEAN SEA LEVEL
North American Datum 1983
Tasmanian Meridian Projection



ÉTABLI PAR LE CENTRE CANADIEN DE CARTOGRAPHIE,
MINISTÈRE DE L'ÉNERGIE, DES MINES ET DES RESSOURCES
RENSEIGNEMENTS À OBTENIR À OUAJATA, EN TERRE-NEUVE, EN 1996.
CES CARTES SONT EN VENTE AU BUREAU DES CARTES DU
CANADA, MINISTÈRE DE L'ÉNERGIE, DES MINES ET DES
RESSOURCES, OTTAWA, OU CHEZ LE VENDEUR LE PLUS PRÈS.
© 1999, SA MAJESTÉ LA REINE DU CHEF DU CANADA,
MINISTÈRE DE L'ÉNERGIE, DES MINES ET DES RESSOURCES.

BAY OF ISLANDS
12 G/1 & 12 G/2
EDITION 4

Energy, Mines and Resources Canada
Énergie, Mines et Ressources Canada