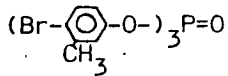
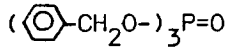


X=Cl, Br, CH₃

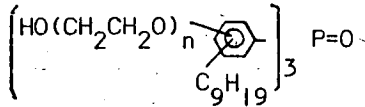
Tris[mono(~tri)bromo(or chloro)phenyl(or methyl-phenyl)] phosphate



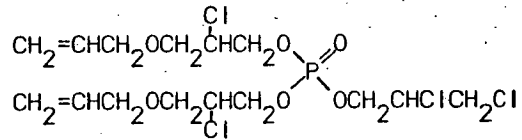
Tris(4-bromo-3-methylphenyl) phosphate



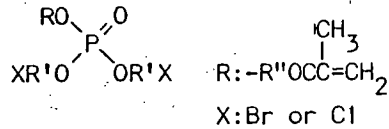
Tribenzyl phosphate



Tris[poly(n=2~20)ethyleneglycolmono(nonyl-phenyl) phosphate

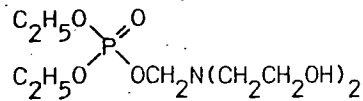


Bis(3-allyloxy-2-chloropropyl) 2,3-dichloropropyl phosphate

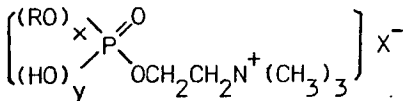


X:Br or Cl

Methacryloxyalkyl(C_{2~4})bis[halogenated(Br or Cl)alkyl(C_{2~4}) phosphate



Diethyl N,N-bis(2-hydroxyethyl) aminomethyl phosphate



(Mono- or di-)alkyl(or alkenyl, C_{8~24}) phosphate cholin salts

R:alkyl or alkenyl