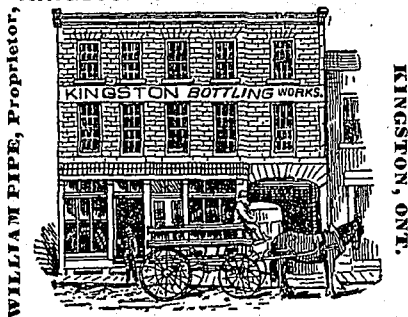


KINGSTON BOTTLING WORKS.

Manufacturer of Ginger Ale, Birch Beer, Sarsaparilla, Cream and Lemon Soda Waters, Ales, Porters, Lager Beer, &c. Ice House, King St. West.

Victoria Wire Mills

OF BEST BRANDS

CRUCIBLE CAST STEEL SIEMENS,
Martin, Bessemer Steel and Charcoal Iron.

PERFORATED SHEET METALS,
ALL SIZES,

Malt Kiln Floors, Steel and Iron Wire Cloth
Moulders' Riddles and Steel Wire Brushes,
Blind, Bed, and Galvanized Fence
Staples, Patent Double Pointed
Carpet Tacks, Wire Window

WIRE WORK OF EVERY DESCRIPTION

Manufactured by

B. GREENING & CO.

Hamilton, Canada.

THE CANADIAN RUBBER CO.

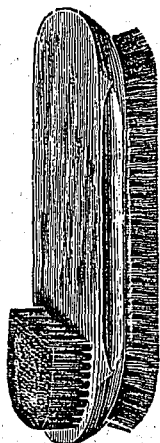
of MONTREAL.
— MANUFACTURERS OF —

Rubber Shoes, Felt Boots, Belting,
Steam Packing, Engine, Hydrant Suction,
RUBBER, COTTON AND LINEN SEAMLESS,

WOVEN HOSE, etc.

Office & Ware Rooms 333 & 335 St. Paul St. } Montreal.
WORKS: Papineau Square.

BRANCH HOUSE: Cor. YONGE & FRONT STS., TORONTO



THE NAPANEE BRUSH WORKS,

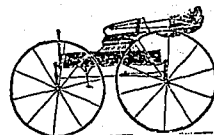
NAPANEE, ONT.

C. W. JENNINGS, Manager.

Illustrated Price List sent on Application.

**LONDON CARRIAGE FACTORY.**

JOHN CAMPBELL,
PROPRIETOR.



All kinds of Coaches, Carriages, Buggies, Sleighs
and Cutters Manufactured, Wholesale and Retail.
All Work Warranted

Carriages shipped to all Parts of the World.

Has been in business over 30 years, and has been
awarded by the Provincial and Local Fairs 200
FIRST PRIZES, besides Second, Third and Di-
plomas; also been awarded Medal and Diploma
at the International Exhibition in Sidney,
New South Wales, Australia.

Factory, King St., West of Market.

CARRIAGE & WAGGON WORKS,

14 & 16 ALICE STREET, TORONTO.

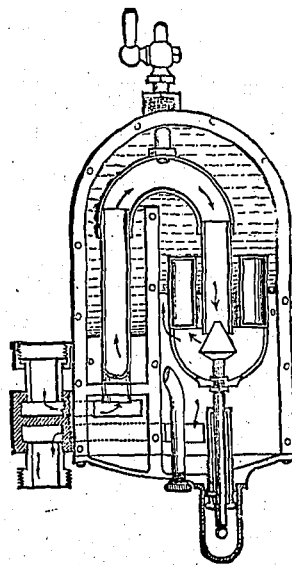
J. P. SULLIVAN, Manufacturer of First-Class
Carriages, Waggon and Sleighs in the latest styles.
All work warranted for one year. Superior Ma-
terial used in all Branches. Call and examine our
work before purchasing elsewhere.

"Money Saved is Money Made!"
ECONOMY IN YOUR GAS BILL!

A Saving of 15 to 50 per cent., as well as an
Increased Brilliancy and Steadiness of Light

BY USING THE

EMPIRE GAS GOVERNOR,



A. R. ROGERS, General Manager,

106 MCGILL STREET, MONTREAL.

Manufactured under Patent and sold by the
EMPIRE GAS GOVERNOR COMPANY.

The Empire Gas Governor may be seen in opera-
tion at the above office, where full explanations will
be given.

TORONTO SCALE WORKS.

Established 34 Years.

Manufacturers of the Improved WILSON SCALES

of every variety.

Railroad,

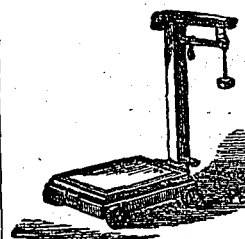
Grain,

Grocer,

Butcher,

Farm,

SCALES.



Received 31 First Prizes, Medals and Governor
General's Grand Diploma, and the only Medals on
Scales in 1884. The Wilson Scales are taking the
lead throughout the whole Dominion. Write for
prices, mention size wanted. C. WILSON & SON,
67 Esplanade St., East, Toronto, Ont.

FRED. ROWLAND,
Pork Packer,

Bacon, Hams,
Barrelled Pork.



Spiced Rolls,
Lard, &c.

Trade Mark.

LONDON, ONTARIO,

PACKING HOUSE:

WILLIAM ST., COR. BATHURST.

OFFICE:

No. 3 Oddfellows Hall, DUNDAS ST.

J. Z. HUSBAND & CO.,

MEDIATORS & COMMERCIAL BROKERS

31 King Street West, Toronto.

Business Places of all kinds bought and sold;
Patents disposed of; and additional Capital
procured for all kinds of legitimate business.

Satisfaction Guaranteed.

RUPTURE!

Egan's Imperial Truss, with a
Spiral Spring, the best ever in-
vented. Took ten years to perfect.
Cures every child and 8 in every 10
of adults. It NEVER MOVES, holds
every Hernia during hardest work
or severest strain, is unrivalled in
the opinion of physicians. Patent-
ed in U.S., Jan. 1884; in Canada, Dec. 1884. Send
for Circular. "The Egan's Imperial Truss
Company," 28 Adelaide St. East, Toronto, Ont.

W. DICKS AND SONS

SMITHS AND MACHINISTS.

Designers, Manufacturers and Operators of Special Machinery for Mechanical Novelties. All kinds of
Screws and many other portions of Hardware required by Pianoforte and Organ Makers. They have also
facilities and mechanics requisite, and will make the leading lines of Steel Tools used by these firms, viz.:
Boring Bits, various patterns, Screwdrivers, Keys, Wrenches, &c., and many Specialties not hitherto made
in Canada. Plans furnished and Estimates given for Steel Dies and Stamped Work.

27, 29 & 31 Adelaide Street East, TORONTO.