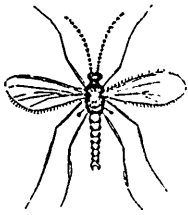


## HESSIAN FLY.



Male, magnified.

Magnified



Pupa Case.



Stalk with insect  
in flaxseed state.



Mag. Larva

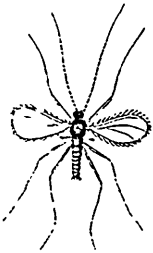


Natural Size.



Female magnified,

## WHEAT MIDGE.



Male magnified.



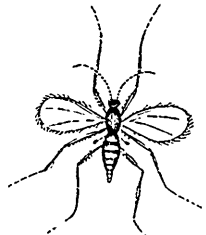
Magnified Larva.



Nat Size.



Wheat as injured.



Female, magnified.

## JOINT WORM.



Magnified Larva.



Injured Stalk and Cells.



NATL SIZE.



Magnified Pupa.



Male.



Female.