

EASY ON FUEL **BUILT TO LAST**

ENTERPRISE

MONARCH STEEL RANGE

In thousands of homes the Enterprise Monarch is daily giving complete satisfaction as a reliable, convenient, and economical range. A stove that constantly makes good wherever used cannot fail to give you perfect service.

THE ENTERPRISE FOUNDRY CO. SACKVILLE, N.B.

SOLD BY LEADING DEALERS EVERYWHERE

Sold by leading dealers everywhere and in Bridgetown by

MAGEE & CHARLTON

Save the surface and you save all!

— and this is the greatest surface saver of them all.

B-H PAINT

LOSS from paint-neglect is vastly greater than the cost of paint-protection. But it is to be noted also that the real cost of using ordinary paint—however cheap it may be—is vastly greater than that of painting with a pure and durable paint such as

B-H PAINT "ENGLISH" 70% Pure White Lead (Brandram's Genuine B.H.) 30% Pure White Zinc 100% Pure Paint

If you would avoid constant repainting—if you would have the paint that has maximum covering-capacity, investigate the cause of the high reputation attained by B-H. You'll find that the favor in which it is held by so many experienced painters is due to a truly remarkable degree of purity—a purity attained by using such ingredients as the famous Brandram's Genuine B.B. White Lead—together with pure zinc and the purest linseed we know how to make in our own splendidly equipped mills. Your investigation will result in a trial of this brand—and that trial will make you a confirmed adherent of this paint that goes so far and that lasts so long. Its fine, smooth surface never cracks or peels—the tough, air-tight coat it gives affords the surest kind of surface-protection against time and weather.

MAGEE & CHARLTON, Bridgetown.

BRANDRAM-HENDERSON

HALIFAX, SACKVILLE, SHERBROOKE, MONTREAL, QUEBEC, TORONTO, VANCOUVER, WINDSOR, SASKATOON, EDMONTON, CALGARY, MEDICINE HAT

Portland Cement

Terra Cotta Sewer Pipe
Shingles and Lumber
Fence Wire of all kinds
Farming Implements
Stoves, Ranges
Heavy and Shelf
Hardware

Beginning June 7th we will close our store every Wednesday afternoon through June, July, August and September.

KARL FREEMAN
BRIDGETOWN, N. S.

AN IMPORTANT DISCOVERY

Manganese Mining Industry Established Aylsford

The Aylsford Manganese Mining Company, Ltd. is a new organization established by prominent Annapolis Valley business men to develop what is believed to be important deposits of manganese discovered near Aylsford. The property, consisting of 320 acres, is located at the base of the South Mountain three miles south of the Auburn Railway Station on the Dominion Atlantic Railway.

A shaft has been sunk on a lead of ore to the depth of about 25 feet. The lead is four feet wide in the widest place, and ore has been traced on the surface to the extent of four hundred feet and crops out in various other places on the property. Samples of this ore sent to Dalhousie University and reported upon by chemists, give 56.5 per cent metallic manganese, which equals about 84.5 per cent peroxide and is considered a high grade ore suitable for chemical purposes. It requires only 45 per cent metallic manganese to manufacture Ferro-manganese. This product is used and is really necessary in the manufacture of steel. Higher grades are used in the preparation of medicines, in the coloring of glass, and also as an oxidizing agent.

Ferro-manganese is worth \$160.00 per ton and the market is strong. The higher grades are worth much more.

W. F. Jennison, a prominent mining engineer and expert on manganese has examined the property and his report thereof is very favorable.

There are now constructed on the property a first class timbered shaft and shaft house, a bunk house, tool house and a building for the storing of explosives. The Company aims at further developing the mine forthwith by installing a 25 H.P. boiler, a steam pump and other equipment.

The authorized capital is \$20,000 in two thousand shares of \$10 each par value.

RECEPTION AT FACTORY DALE

On Friday evening, April 23rd, a reception was held at the home of Mr. and Mrs. Ross McNeil, Factorydale, following the recent marriage of their daughter, Margaret Olive, to Mr. Edward Thomas Johns, of Cranville.

The bride and groom who had just returned from Halifax, where a part of their honeymoon had been spent, received the congratulations of a very large number of friends who gladly assembled in the tastefully decorated rooms, bringing many beautiful gifts of silver, cut glass, china and linen as tokens of regard. Generous amounts in cash were also received from the bride's parents and others.

Delicious refreshments served in variety and abundance were an added good cheer to a most enjoyable evening.

The serenade, perennial as "Hope," made the night hideous for a short while, subsiding after a generous treat.

The dress worn by the bride was of brown messaline silk and georgette.

The groom served in the late war and was wounded in the battle of Arras. He now holds a position in the employ of the D. A. R., and is much esteemed by his associates.

The bride will be greatly missed in her home and community, but will be followed to her new home in Kentville by the good wishes of all her friends.

SOME HENS

"Talking of hens," remarked the American visitor, "reminds me of an old hen my dad once had. She would hatch out anything from a tennis ball to a lemon. Why, one day she sat on a piece of ice and hatched out two quarts of hot water."

"That doesn't come up to a club-footed hen my mother once had," remarked his companion. "They had been feeding her by mistake on saw-dust instead of oatmeal. Well, she laid 12 eggs and sat on them, and when they hatched 11 of the chickens had wooden legs and the 12th was a woodpecker!"

BALD-HEADED CHEMIST

A Scotchman went to London for a holiday. Walking along the streets he noticed a baldheaded chemist standing at his shop door and inquired whether he had any hair restorer.

"Yes, sir," said the chemist, "step inside, please. Here is article I can recommend. I have testimonials from great men who have used it. It makes the hair grow in 24 hours."

"Aweel," said the Scot, "ye can give the top o' your head a rub wi' it and I'll look back the morn an' see if ye're tellin' the truth."

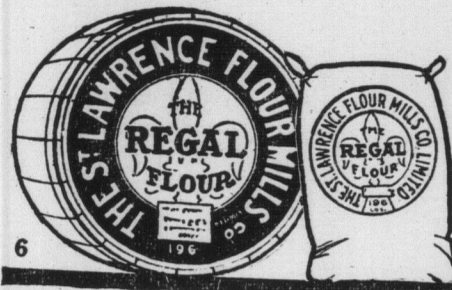
The chemist returned the bottle to the shelf and kicked the errand boy for laughing.

Minard's Liniment cures Distemper.

REGAL

The Big Value in
FLOUR
for Bread, Cakes & Pastry

The St. Lawrence Flour Mills Co.
Montreal, P.Q. LIMITED Halifax, N.S.



GRAY-DORT

Built in Canada by Skilled Canadian Workers and Canadian Capital

Can't you see the Value?

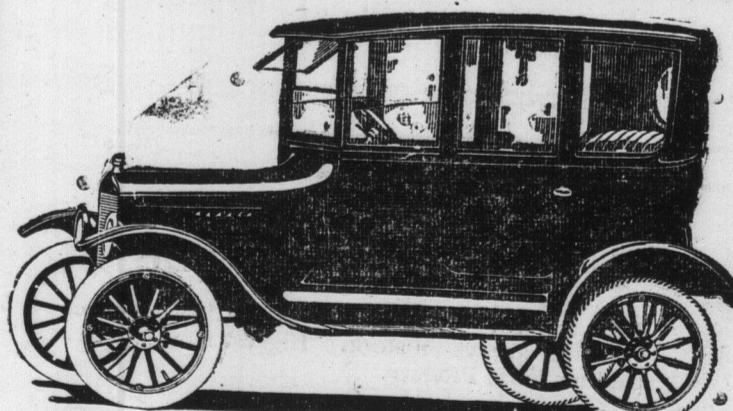
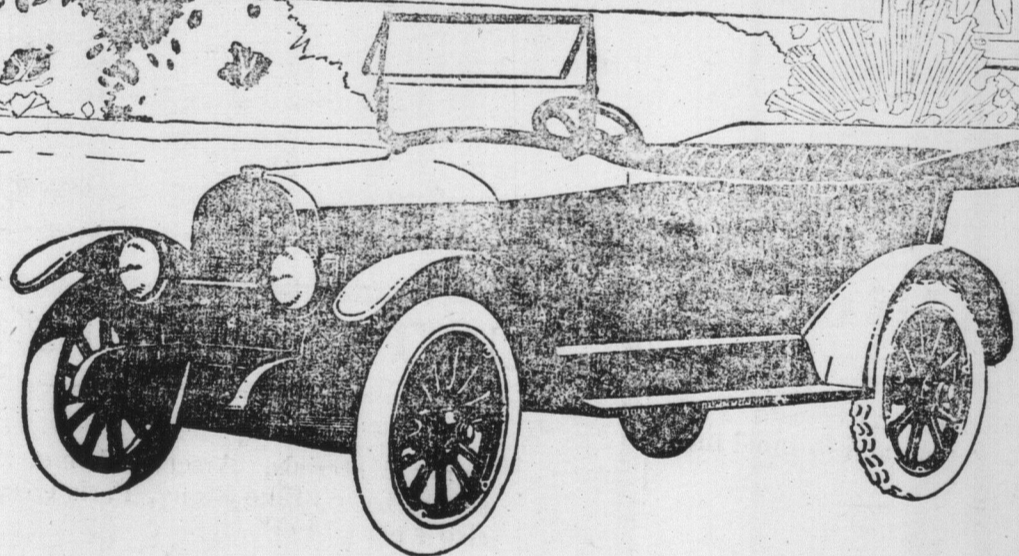
If you want to judge motor car values, examine the cars—compare them. You can see the value in the Gray-Dort. You can see where we have used more costly construction—made big improvements. And you know the price is only \$1465 (plus war tax).

Our dealers tell us that Gray-Dort value is creating a shortage of cars. We would advise you to see the Gray-Dort dealer now.

The Gray-Dort 5-passenger touring car is \$1465 f.o.b. Chatham, (war tax extra.) The 2-passenger roadster is the same. The Gray-Dort Special, with extra equipment and beautifully finished, is \$150 extra on the standard. The Gray-Dort Ace, the most beautiful light car of to-day, is \$255 extra on the standard.

GRAY-DORT MOTORS, LIMITED - Chatham, Ontario.

FRED E. BATH, Bridgetown.



FORD SEDAN. Electrical Starting and Lighting
PRICES—including Electric Starting and Lighting, Ford Sedan \$1250, f. o. b. Ford, Ont. (War tax extra.)

L. B. DODGE, Ford Dealer
MIDDLETON, N. S.

Boston & Yarmouth Steamship Co., Ltd.

Winter Service S. S. "Prince Arthur"

From Yarmouth Leave Wed. and Sat. at 6.00 p. m.
From Boston: Leave Tues. and Fri. at 1.00 p. m.

For staterooms and other information apply to

J. E. KINNEY, Supt.
Yarmouth, N. S.

ALL KINDS OF
STAPLE GROCERIES
AND
GARDEN SEEDS
GROCERY

INSURANCE

Are your buildings insured for enough to cover them at present day prices?

How about your auto? For a small amount I can insure your car against fire from any cause.

H. T. PHINNEY, - Lawrencetown, N. S.
Fire, Automobile, Life and Accident Insurance

ROOF

We have just received of Paroid products, and three ply Roofing Slate Shingles and B.

We also have ple Spruce and Steel Shing

J. H. HICKS

Queen St
BRIDGETOWN

ADVERTISE IN THE MON
THE IMMEDIATE