



AUGUST CLEAN UP

SALE IN OUR STORE

EXCELLING IN GOODNESS and Outclassing in Values any Previous AUGUST SALE HERE

Final price reductions—final opportunities to share in savings of unequalled size on needs for this and next summer. All warm weather goods simply must go! Everything that will hasten their selling has been done. The price drops are the greatest for the season—every purchase brings you an unprecedented profit. This sheet could not tell the whole story. VISIT THE STORE.

FRIDAY, SATURDAY & MONDAY

SPECIAL!

WHITE JEAN—This is a splendid material with soft undressed finish, and can be readily used for ever so many purposes. Reg. 55c. yard. Friday, Saturday and Monday ... **47c**

SPECIAL!

MEXICAN WRAPS—Very handy Wraps for couch, baby carriage, hammock, or as a dust wrap. They come in almost every shade; a generous size, fringed and plain. Special Friday, Saturday & Monday ... **55c**

SPECIAL!

SPOT MUSLINS—Shower o' Hall Muslins in a real nice quality. Muslins that may be used for almost every purpose. 40c. value. Friday, Saturday and Monday, the yard ... **34c**

FINAL PRICINGS ON CLEAN-UP-LINES IN THE MEN'S SECTIONS. NOTABLE VALUES.

COUNTRY CLUB NIGHT SHIRTS—A nice cool White Linen Night Shirt for men, turnover collar, galon trimmed front, collar and pocket; made in true fitting sizes. Reg. \$3.00. value. Friday, Saturday and Monday ... **\$2.65**

MEN'S SOFT COLLARS—"Tooke" and "Ida" Soft Collars are favorites; they fit well, look well and feel good these warm days. Many styles to suit many tastes; rounded and peak fronts. Regular 35c. value. Friday, Saturday and Monday ... **30c.**

CUFF LINKS—Gold fronted and unvarnished Cuff Links that are exceptionally strong; lots of pretty designs and plain Links also. Regular 60c. pair. Friday, Saturday and Monday ... **49c.**

MEN'S SUEDE FINISH GLOVES—Here is the Glove you will like; looks like the real Suede; it's a fabric glove that washes and wears exceptionally well; shades of Grey and Brown; sizes 8 and 8½ only. See these. Reg. \$1.90. Friday, Sat. & Monday ... **\$1.78**

RED RUBBER GLOVES—Made of good quality and extra heavy red rubber, seamless; very handy about the garage. Special Friday, Saturday & Monday, the pair ... **39c.**

BOYS' WIDE-END NECKWEAR—In plain, striped and fancy figured; a nice assortment of patterns that will satisfy. Values to 50c. Friday, Saturday and Monday ... **39c.**

BOYS' BETTER BRACES—Just a couple of dozen of Boys' good wearing Elastic Braces. These are stronger than the ordinary and are real value for 55c. pair. Friday, Saturday and Monday ... **30c.**



MEN'S WHITE SHIRTS—Soft fronted all White Shirts with laundered cuffs; the ideal Shirt for present wear; perfect fit, coat style; all sizes. Reg. \$1.60. Friday, Saturday and Monday ... **\$1.48**

MARK-DOWN SALE OF MEN'S SOCKS—This offer brings you some splendid Socks that you can wear right up to the end of the year. Natural shade, may be dyed any color at home. Reg. 55c. pair. Friday, Saturday and Monday ... **39c.**

BOYS' SAILOR FRONTS—In good wearing White Jean with embroidered anchor front; bound and taped. Reg. 40c. Friday, Saturday and Monday ... **36c.**

BOYS' CORDUROY HATS—A tidy little Hat that he can wear from now on. Comes in a pretty Partridge Cord, with roll brim and broad corded band; looks smart and will give splendid wear. Reg. \$2.30. Friday, Saturday and Monday ... **\$1.98**

FINAL REDUCTIONS ON SUMMER HOSIERY, BOOTS AND SHOES

LADIES' ¾ SILK HOSE—Special value; shades of Sky, Hello, Grey, Pink Tan, White and fancy Black Lisle Top and Toe; values for 60c. Friday, Saturday and Monday ... **39c.**

LADIES' LISLE HOSE—In good quality Lisle Black and White; extra fine; a popular line. Reg. 75c. value. Friday, Saturday and Monday ... **64c.**

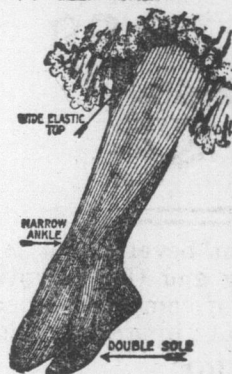
LADIES' TAN BOOTS—Very dark Tan shade, laced style. This boot has a Suede like kid top, high heel and a fine vici vamp. Brand new and offered at a special price, being late in arriving. Reg. \$7.00. Friday, Saturday and Monday ... **\$6.65**

MEN'S TAN BOOTS—This is a soft Tan Calf Boot in Blucher style, with rubber sole and heavy cushion rubber heel. We want you to come and see this boot. Value for \$9.00 pair. Friday, Saturday and Monday ... **\$7.75**

LADIES' NIGGER BROWN HOSE—These are particularly good. All Lisle make. Just the right weight for present use. Reg. 65c. Friday, Saturday and Monday ... **55c.**

LADIES' SHOES—A very dainty thing in finest quality Gun Metal Shoes; perforated finish; plain toe, high heel; value for \$5.70. Friday, Saturday and Monday ... **\$5.25**

HOUSE SHOES—Low heeled, soft Dongola Shoes with Pom-Pom front and quilted insole; a really comfortable house shoe. Regular \$2.60. Friday, Saturday and Monday ... **\$2.38**



LADIES' HIGH LACED BOOTS—Nobby looking, 17 eyelet height, with Fawn Nubuck top. This is in putty shades, dull kid-like finish, and patent vamps; plain toe, spool heel. See this elegant piece of footwear. Reg. \$7.50. Friday, Saturday and Monday ... **\$7.20**

CHILDREN'S TAN BOOTS—Sturdy little Boots for little folks, sizes 4 to 8; laced style; bright Tan shade; low heel. Reg. \$2.00. Friday, Saturday and Monday ... **\$1.89**

Two Specials in MEN'S BOOTS

MEN'S TAN BOOTS—This is a soft Tan Calf Boot in Blucher style, with rubber sole and heavy cushion rubber heel. We want you to come and see this boot. Value for \$9.00 pair. Friday, Saturday and Monday ... **\$7.75**

MEN'S GUN METAL BOOTS—This is surprise value, an extra heavy boot with an extra heavy rubber sole and heel attached to heavy leather sole and heel; looks good; Blucher cut. Our Special Friday, Saturday and Monday ... **\$6.40**



Strike Out Right Away for Some of These Really GOOD VALUES in the SHOWROOM

LADIES' OVERALLS, 84c.—Loose fitting Check Gingham Overall, with strap shoulders; mostly Blue and White and Black and White checks. These are made of good washing materials. You need one, perhaps. 84c. Reg. 95c. Friday, Saturday and Monday ...

BLOUSE SPECIAL!

BLOUSE SPECIAL—We have assembled some rather nice-looking Blouses for this week's Sale. Some in plain Muslin and Linens; others striped and flowered; V and square neck, round and Sailor collars; sizes range from 36 to 46 inch bust. Reg. to \$1.90 each. Friday, Saturday and Monday ... **\$1.49**

CHILDREN'S WOOL JACKETS—We offer these in Cream, Sky, Pink and Crimson; pretty little Polka jackets for little ones; crocheted string at neck. Reg. \$1.30. Friday, Saturday and Monday ... **\$1.08**

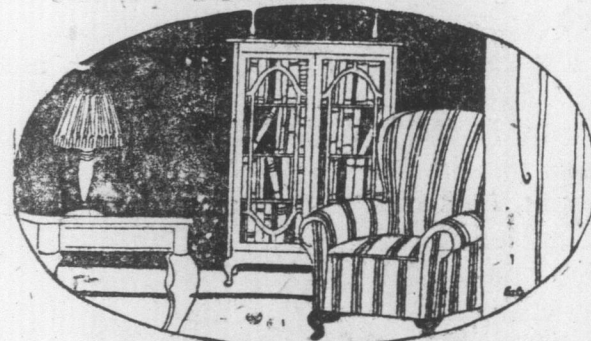
LADIES' SUMMER VESTS—These we are clearing; about a dozen in the lot; fine White Jersey make, wing sleeve; others strapped at shoulders and neck and with ribbon headings; any size. Reg. 33c. each. Friday, Saturday and Monday ... **27c.**

LADIES' MUSLIN COLLAR AND VEST—These are new, having just arrived; some tucked and lace trimmed, and others hemstitched with lace edge and small buttons. See these. Regular 80c. Friday, Saturday and Monday ... **74c.**

FLOWING VEILS—The favoured style in Veils; some to wear loose, others to slip over hat; shades of Navy, Mole, Purple, White and Black. Reg. \$1.25. Friday, Saturday and Monday ... **\$1.10**

BEAUTIFUL SILK SKIRTS—Was there ever a season when they were so popular. These are in elegant lot; not many 'tis true, but they represent the very newest style; shades of Navy, Green, Fawn, Black and prettily striped things; some with elastic top, others with belt and fancy pockets. Reg. to \$9.00 ea. Friday, Sat. & Monday ... **\$7.95**

SAVINGLY PRICED THINGS FOR THE HOME



REVERSIBLE BATH MATS—Extra heavy and just what you need, perhaps, for your bathroom floor; mixed shades of Blue and White and Green and White; size 23 x 42, bound. Reg. \$1.90. Friday, Saturday and Monday ... **\$1.67**

WHITE DAMASK TABLE CLOTHS—These are a special lot of 18 only; good quality, medium size; assorted patterns. Value for \$2.30. Friday, Saturday and Monday ... **\$2.08**

SIDEBORD CLOTHS—Full size Cloths in White Linen, with lace edge and lace motifs, embroidered and lace insertion trimmed. Reg. \$1.00. Friday, Saturday and Monday ... **90c.**

LACE TEA CLOTHS—Large size Nottingham Lace Tea Cloths; rather prettily patterned and made in an over size; great wearers and easy to wash. Reg. \$1.20. Friday, Saturday and Monday ... **98c.**

PILLOW CASES—Just 2 dozen of these in best quality English make, wide frill with 3 rounds of hemstitching and tuckings, plain centre; extra quality. Reg. \$1.25 each. Friday, Sat. & Monday ... **\$1.10**

LACE CURTAINS—40 pairs of pure White American Lace Curtains, each Curtains 2½ yards long; a very nice range of patterns that are lacey-looking and fit to grace any room in the house. Reg. \$2.60 pr. Friday, Saturday and Monday ... **\$2.35**

GLASS TOWELS—Crimson-Cross-barred Glass Towels in good-wearing English Linen Crash; hemmed ready for use. Regular 55c. each. Friday, Saturday and Monday ... **32c.**

NOTE THESE VALUES

EMBROIDERED NOVELTIES—5 piece sets for attaching to Boys' Sailor Suits, Girls' Middy Suits; assorted shades. The Set Friday, Saturday and Monday ... **14c.**

FRAMED PICTURES—Large Size 19 x 24 with 2½ inch gilt frames. Pretty rural scenes in imitation oils. Special for Friday, Saturday and Monday ... **\$1.35**

CHILDREN'S SETS—Plated Ware—Knife, fork and spoon, embossed Little Red-Riding Hood pattern. Just what they would like. The Set Friday, Saturday and Monday ... **65c.**

CUTICURA SOAP—The genuine, delicate, lasting and economical; a medicinal and Toilet Soap. Friday, Saturday and Monday, the Cake ... **37c.**

CUTICURA TALCUM POWDER—In large tins, guaranteed quality and purity; comforts, purifies and beautifies, for the toilet, bath or nursery; per tin. Friday, Saturday and Monday ... **37c.**

AMERICAN PINS—Electro-plated Pins in handy book form, assorted sizes. Hang one on your dressing table. The Book Friday, Saturday and Monday ... **6c.**

LADIES' and MISSES' CRUSHER HATS—In plain and check patterns; splendid Hats for knockabout and for travelling. Reg. to 75c. Friday, Saturday and Monday ... **36c.**

LADIES' GLOVES—Nice silk make in Black and White, with contrasty stitchings; 2 dome wrists; value for \$1.25. Friday, Saturday and Monday ... **\$1.10**

James Baird LIMITED

SPECIAL SALE of Table Cloths and Table Covers

Large size Damask Table Cloths in Blue and White and Crimson and White checks, suitable for your dining table; others in Crimson and Green mixtures, that make very serviceable wearing Table Covers; washable; size 53 x 72. Reg. \$3.75. Friday, Saturday and Monday ... **\$3.50**

New Climate Aim of Newfoundland.

Big Dominion Is Planning Scheme to Keep Back Ice From Arctic and Produce Balmier Weather.

St. John's, N.E., Aug. 17.—Newfoundland is contemplating changing its climate. The impossible of a decade ago is the every-day affair of to-day, so why shouldn't a country change its climate if it doesn't like it?

The climate of Newfoundland although by no means a very cold one, would be changed if a breakwater were built across the Straits of Belle Isle, between the island and the main land and the cold Labrador current were shunted out into the Atlantic ocean. Such a dam is being seriously considered. It would cost an immense sum of money but engineers say it presents few difficulties.

The Labrador current at present is the chief factor in moulding the climate not only of Newfoundland but of the maritime provinces of Canada and of New England. Coming down from the Arctic ocean, it pours through the Straits of Belle Isle and, circulating around the Gulf of St. Lawrence, washes with its cold flood the coast of Newfoundland, Quebec, New Brunswick and Nova Scotia. Then passing through Cabot Strait, it turns south and sweeps along New England. Its strong southward flow acts as a cold wedge which piles the Gulf Stream away from all these coasts and shuts that ocean river, bearing the warmth of the tropics, off northeastward across the ocean.

If the Bell Isle dam is built the Labrador current would be blocked out of the Gulf of St. Lawrence and, sheering off southeast, would miss the mainland and continue to effect only the northeastern coast of Newfoundland. The Gulf Stream then would ease in against the continent and, flowing into the Gulf of St. Lawrence, warm all the surrounding shores and islands.

The Gulf Stream is responsible for the mild winter climate of England and northern France. England is farther north than Newfoundland. If after cooling off in its long passage across the northern seas, the Gulf Stream is still such a factor in tempering England's climate, it would have an even greater effect, it is believed, in tempering the winter climate of eastern Canada and New England.

The climate of Newfoundland is not as cold as that of Canada or many parts of New England, but the Islanders are not satisfied and are of the opinion that if the project were realized its influence would be felt far inland. The mouth of the St. Lawrence river is in the same latitude as southern Alberta. Yet while the St. Lawrence ports are blocked with ice in winter, there is only light snowfalls on the prairie farmlands of southern Alberta and livestock graze out of doors all the year round. Alberta is an illustration of the effect of a distant warm sea current. Its wonderfully open winters are due to the chinook winds which, warmed by the Japanese current that washes the shores of British Columbia, flatter across the Rocky Mountain ranges.

Under present conditions, New Brunswick, Nova Scotia, Quebec and Prince Edward Island are fine farming countries and their output in farm products, especially fruits and livestock, according to statistics of the Canadian National Railways, compares favorably in bulk with that of other parts on the Dominion. But with a warmer climate, agriculture would be wonderfully stimulated. The value of land would be enhanced by billions of dollars.

St. Lawrence river ports, through which a great part of Canada's export trade in wheat passes, would remain open all winter and a tremendous accession of wealth would result to the nation from this unrestricted, all-the-year-round commerce. Montreal, as a result, would suddenly loom as a potential trade rival of New York.

New industries would spring up everywhere. Population would be vast ly increased. The Bell Isle project would change not only the climate but perhaps the future destiny of Canada and of Newfoundland, and the entire northeastern coast of North America. Newfoundland is contemplating the creation of vast shipping ports along her coast which are now hardly feasible because of the presence of icebergs in the Atlantic and drift ice from the Arctic. A railway over the breakwater to Canada is also planned, Charleston American.

FADS AND FASHIONS.

More use will be made of trimmings, especially of braids and bindings.

Dark blue and emerald velvet are combined for the smartest of Fall suits.

A frock of corn-colored chambray has strips of lavender chambray as decoration.

A frock of flesh-colored organdie gives itself a French touch with pale blue ribbons.

Every Saturday evening after 7 o'clock, Choice Ends of Beef, Mutton, Lamb, Pork will be sold at cost. ELLIS & CO., LTD., 203 Water Street.—nov29.