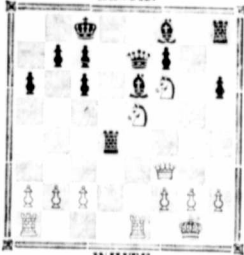


**CHESS COLUMN.**

All communications and contributions to be addressed to J. E. NARRAWAY, P. O. Box 75.

In place of a problem this week we give the position in the match game No. (1) now in progress between the Boston Globe Club and the St. John Club, as it stands after White's 16th move. White, Messrs. Knowles, Henderson and Narraway. Black, Messrs. G. A. Hall and others

**BLACK.**



Black to make his 16th move.

BOSTON, March, 1878.

DEAR EDITOR,—The Newton Chess Association having accepted the invitation alluded to in my last, sent in a delegation on the evening of the 6th inst., to play a friendly match at the Globe Club rooms, and an interesting game, which I herewith enclose, resulted. The greater experience of the elder club was much in their favor, but the Newton players made quite a determined defence, and the meeting was a successful and enjoyable affair.

Messrs. Bates, Hunt and Sargent were counsel for defendants, and Messrs. Snow, McMullen and McIntyre conducted the prosecution on the part of the Globe.

Some of hand play was indulged in after the match was over and one of the games, an amusing (for 1st player) skirmish between Mr. Sargent and a Globite whose modesty blushes to be recognized, was speedily decided:

- |           |           |           |           |
|-----------|-----------|-----------|-----------|
| Mr S.     |           | 1 P-K4    | 1 P-K4    |
| 1 P-K4    | 1 P-K4    | 2 Q-K4-B3 | 2 Q-K4-B3 |
| 2 B-B4    | 2 Q-K4-B3 | 3 P-K R3  | 3 P-K R3  |
| 3 K Kt-B3 | 3 P-K R3  | 4 PXP     | 4 PXP     |
| 4 P-Q4    | 4 PXP     | 5 KXP     | 5 KXP     |
| 5 KXP     | 5 KXP     | 6 P-Q Kt3 | 6 P-Q Kt3 |
| 6 QXKt    | 6 P-Q Kt3 | 7 Q-Q K2  | 7 Q-Q K2  |
| 7 Q-Q5    | 7 Q-Q K2  | 8 K-Q R4  | 8 K-Q R4  |
| 8 QXR     | 8 K-Q R4  |           |           |
| 9 B-R7    |           |           |           |

At this point Black concluded that the subsequent proceedings could not interest him much more and resigned in a badly demoralized condition.

Next on our programme is the return game with the Newtons, and a Chess literary entertainment at the Globe rooms, whose original verse and prose chess matter will be in order.

Truly yours,

MAX.

We withhold the solution of Prob. No. 5, until next week, as none of our solvers have yet succeeded in it. The answers we have received vary from seven to thirty-five moves. Some of them have overlooked the fact the Kt covers Kt 2 sq., and therefore the king cannot occupy that square.

PERSONAL.—Mr. C. F. Stubbs, who is spending a few weeks in the States, has been trying the skill of chessers in Providence, Boston, &c., and we believe is holding his own.

**TO CORRESPONDENTS.**

J. C. M. I.—Many thanks. Very sorry for the Preceptor.

REV. J. W.—Your remark about impossible positions is quite correct. Can you favour us with some problems?

**PUZZLES' KNOTS.**

Edited by ELLSWORTH, P. O. Box 3421, Boston, Mass.

Contributions and answers are cordially invited from all interested in whatever pleases the young, and also from every reader of the TORCH, and the Puzzle fraternity in general. All communications for this Department should be sent to its Editor at the above address.

**30.—NUMERICAL ENIGMA.**

I am composed of 17 letters:—  
My 2, 5, 9, 15 is a precious stone.  
My 1, 13, 11, 4, 7 is what my whole is continually making.  
My 6, 2, 12, 16 is what barbers use.  
My 5, 17, 8, 9, 14 is an expression of contempt.  
My 10, 9, 3, 5 is a vexatious insect.  
My whole is a name well known in the literary world.

St. John, N. B. CIGARETTE.

**31.—DROP LETTER QUOTATION.**

W-t -s -h -f-a-o-o -t-e -i -d,  
Boston, Mass. HUGO.

**32.—CHARADE.**

My first is a relative; my second is a snare; my whole is a poem.  
Detroit, Mich. GINX

**33.—LOGORIPHI.**

Whole I am to flee; change my head, and I become a deceiver; transpose me, and I am parts of the globe; curtail me and I am a sailing; again curtail, and have a Norwegian proper name; transpose me and have a name often chosen by pontiffs.  
St. John, N. B. VIOLA.

**34.—HOUR GLASS PUZZLE.**

A high-priest of Apollo; a pupil; part of acornite; a consonant; a vowel, and a preposition; a beautiful tree; accumulated.  
Central's name the founder of Athens. Diagonal name crude, and an optical machine.  
St. John, N. B. TELLIS.  
(Answers in two weeks.)

**ANSWERS TO PUZZLES IN MARCH 9.**

18.—Detroit. Savannah. Dublin. Moscow.

19.—D ner O 20.— S A L V E

O ro F T V

M icma C A A

I on A T D

N ov N R P O D E

I ot A

O voi D

N ev A

21. D I A M O N D 22. Read, lead, mead.  
I N V E N T 23. William the Conqueror.

A V E R T  
M E R E  
O N T  
N T

**PRIZES.**

For first best list of answers a standard Boston Weekly, one month. Second list, Torch two months. Third list, a suitable prize.

**CHAT WITH KNOTTERS.**

GEO. E. A.—You have correctly solved Nos. 18 and 22. Please do not forget our request for "Knots." We expect a good batch from you.

CIGARETTE.—Thanks for your excellent contributions. They are cordially welcomed, and very acceptable. Please write us often.

TELLIS.—Your solutions to Nos. 18, 20, 22, and 23 are correct. Thanks for puzzles. We are glad to know you like the TORCH.

VIOLA.—We will be pleased to hear from

you often, and invite your further contributions. Those on hand are very good.

SOLVER.—We are glad to say all your solutions are correct, and you will receive prize offered for best list of solutions.

CAMLO.—Your puzzles are very good, and will have an early insertion. Please come often.

A LEADING MEDICAL AUTHORITY SAYS:—"Consumption is essentially a disease of degeneration and decay. So it may be inferred that the treatment for the most part should be of a sustaining and invigorating character—nutritious food, pure, dry air, with such varied and moderate exercise in it as the strength will bear, the enlivening influence of bright sunshine and agreeable scenery, and cheerful society and occupation, aided by a judicious use of medicinal tonics and stimulants, are among the means best suited to restore the defective functions and structures of frames prone to decay."

Robinson's Phosphorized Emulsion of Cod Liver Oil with Lacto-Phosphate of Lime by its gently stimulating and nutritive tonic properties is adapted in an eminent degree to this office of restoring the "defective functions and structures," as the numbers of cases in which it has been so successfully used, together with its short record of a few months that has placed it in the foremost ranks of proprietary remedies will fully testify.

Prepared only by J. H. Robinson, St. John, N. B., and for sale by druggists and general dealers. Price \$1 per bottle; six bottles for \$5.

**To the Electors of Queen's Ward.**

GENTLEMEN—I will be a Candidate for the COUNCILLORSHIP of Queen's Ward. Should I be elected will serve you to the best of my ability.  
HARRIS ALLEN.

REMOVAL.—HENRY GORRIE, Merchant Tailor, has removed to DR. KING'S BUILDING, GERMAIN STREET.  
March 9-10

**Spring Suitings.**

JUST OPENED—One of the nicest lots of SCOTCH and ENGLISH TWEEDS ever seen in the Market. VERY CHEAP  
1 case WORSTED COATINGS in all the new patterns, splendid goods.  
1 case of SPRING OVERCOATS at very low prices.  
THOS. LUNNY,  
No. 9 King Street.  
March 9



1878. Spring Style. 1878.

**SILK HATS.**

WE have just received our SPRING STYLE SILK HATS.  
Also in Stock—Extra large sizes of SOFT FUR FELT HATS, 7 1/2 to 7 3/4.  
THORNE BROS.,  
Hat and Fur Store, 33 King Street.

**FISHING THREAD.**

WE have received a large Stock of GILLING THREADS, assorted, all numbers in use.  
DAILY EXPECTED.  
3000 lbs. Dressed Salmon Twine;  
1000 " Undressed do.  
For sale at Commission Prices.  
T. R. JONES & CO.  
Feb 22-24.

**Real Estate Agency.**

THE subscriber begs to inform the public that he is prepared to negotiate loans on Mortgage and Real Estate in the City and Portland.  
Parties desirous of transacting business are requested to call.  
CHARLES W. WATERS,  
Office Vernon's Building,  
Corner King and Germain st.  
Feb 9

Printed by GEO. W. DAY, 57 Charlotte Street