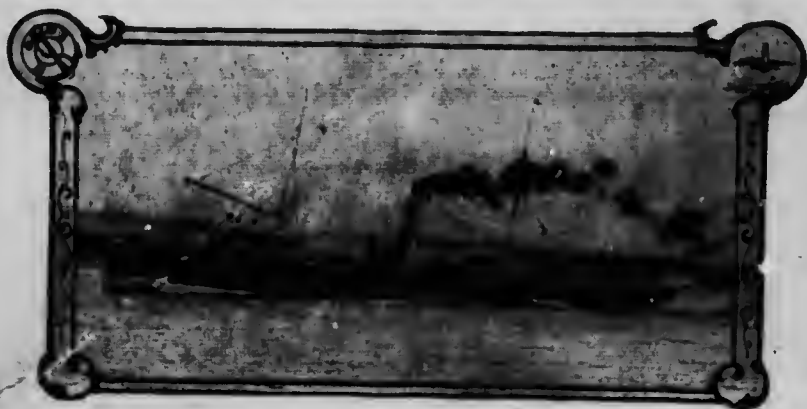


T H E A L A S K A N T R I P

MUCH has been said and written of an Alaska trip. The geographical characteristics of the Coast are very similar to those of Norway or the West coast of New Zealand, but the scale on which they are executed is far greater and grander. Deep inlets cut their way into the Coast and on either hand rise steep cliffs straight from the water's edge. Outside of these fiords a long line of islands form a natural breakwater, and the many winding reaches and narrow channels present with marvellous variety views of great charm and poetry. As the northern latitudes are reached, the scenery increases in grandeur, and the traveller begins to realise he is in a strange and wonderful region. Archipelagoes, peninsulas, bays, inlets and forest-clad mountains alternate with snow-capped giants and splendid glaciers, while the signs of human habitation even have an unfamiliar aspect.



Canadian Pacific SS. "Princess May."
NORTHERN BRITISH COLUMBIA AND ALASKA ROUTE.

Many tourists every year make the excursion trip to Alaska and return, but with the operation by the Canadian Pacific Railway of the steamships "Princess May" and "Princess Beatrice," excursionists now have the opportunity in making the Alaska excursion trip to also visit the Northern British Columbia Coast. The two steamships are of the highest class on the Pacific Coast. The "Princess May" has been recently overhauled and has splendid passenger accommodation for 175 first-class passengers, with spacious smoking rooms and large observation room on the upper deck forward, permitting a free and unobstructed view forward of the magnificent scenery along the route.

The "Princess Beatrice" is a new steamship, constructed in 1903, well equipped and up-to-date in every particular. The cabins on the steamship are commodious and furnished with every consideration to comfort. The state-rooms are airy and well fitted; the cuisine is under the direction of experts in the culinary art, so that the service in the dining saloon is equal to that of a first-class hotel.