

THE EVENING TIMES AND STAR, ST. JOHN, N. B., SATURDAY, DECEMBER 20, 1919

NEW BRUNSWICK TELEPHONE CO. APPLIES FOR INCREASED RATES

Application Filed With Public Utilities Commission Here
Wednesday Declares That With Existing Revenue
Company Cannot Maintain Plant at Necessary Stand-
ard, Pay Sufficient Wages and Dividends.

The Public Utilities Commission at its quarterly meeting here Wednesday afternoon received an application from the New Brunswick Telephone Company, Limited, for a general increase in rates.

The full text of the company's application follows:

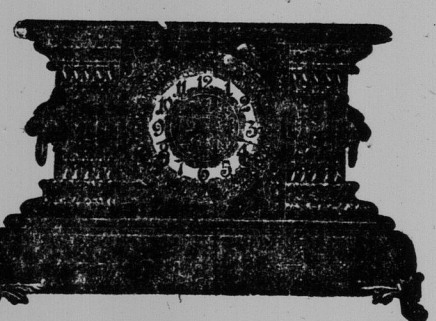
To the Board of Commissioners of Public Utilities for New Brunswick: The Petition of the New Brunswick Telephone Company, Limited, humbly sheweth:

In common with all other commodities the cost of giving telephone service has greatly increased since 1911, the last time this board dealt with the question of rates of your petitioner.

ATHLETES—Muscular fatigue quickly yields to the use of

BAUME ANALGESIQUE

Try a tube today.
Dealers of Substitutes
75c. a tube.
THE LEBLANC BROS. LTD.,
Agents, MONTREAL.

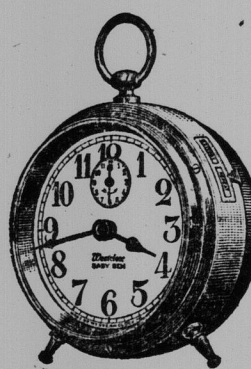


CLOCKS

Cutlery and Leather
Goods Form Pleasing
and Practical Gifts

Among the useful gifts for the home, few will be more appreciated than a good, reliable Timepiece for the living-room, den, library, bedroom or boudoir.

Our Clock Section presents a very comprehensive range of sizes, styles, and finishes, in cases of Oak, Mahogany, Black Enamel with Ornamental Pillars, French Ivory, Gilt effect, and Leather Cased Travellers' Clocks, all reliable time-keepers.



Big Ben

The friend of folks in all walks of life. Big Ben, like Great Men, is faithful, steady, and keeps his appointments promptly. Be sure to have Big Ben on your gift-list.

Fine English Cutlery

We have a limited quantity of the Finest English Cutlery, which is none too plentiful just now, our line including Richly Cased Carving Sets, Knives, Forks, Pocket Knives and Razors.

Inspect this excellent line while the range is complete.

Also a complete line of LEATHER GOODS, embracing Dressing Sets, Writing Portfolios, Music Rolls, Purses, Shopping Bags, Bill Folds, Wallets, etc.

KING STREET STORE :: GROUND FLOOR

W. H. Thorne & Co., Ltd.

Stores open till 10 o'clock p. m., from now until Christmas Eve.

\$730,012.22, and on Sept. 30, 1919, was \$740,088.50, it shows an increase of \$70,076.28, the amount shown in the preceding paragraph as having been used for carrying on the operations of the company.

The details of where this money was used will be submitted in evidence. This appropriation of reserve has averaged, since 1910, 6.4 per cent. on plant value. Of the sum of \$740,088.50, shown above, all but \$211,206.25, used to create a liquid reserve, has been used to provide additional plant and equipment, the benefits of which have accrued to the user of the Company's service, by giving them the use during the period mentioned of \$529,882.25 of plant or money on which no dividend had to be provided. This use of the reserve fund must now cease owing to the necessity of making extensive replacements to plant, due to the ravages of time, obsolescence and increase of cost.

To illustrate this point, the plant in St. John must be replaced and reconstructed to an extent involving the use of over \$300,000. The equipment of growing towns of Campbellton, Chatham, Newcastle, Sackville, Sussex and St. Stephen must be replaced, because of the necessity for installation of common battery service and of obsolescence. This involves change in switchboards, telephones and reconstruction to outside plant at a cost of over \$100,000, all chargeable to replacement. The general business in our entire territory, particularly in our exchanges in Moncton, Fredericton, and the extra-ordinary demands for toll as well as exchange service in these two cities, involves the expenditures of further large amounts to arrange plant and equipment in order to meet new conditions and improve the service. The demands of modern business require long distance connections with Boston, New York, Montreal and other points. In order to give this service, substantial changes and improvements in the toll plant must be made, due to the fact that advances in demands for toll service of this character have rendered our present toll equipment unsuitable. Coming with the furnishing of long haul service of this character will be the necessity for engineering expense and a higher standard of maintenance and operation.

The greater part of the above expenditure must be made from the Reserve Fund, as the claims of depreciation and obsolescence must now be met and the money temporarily borrowed from depreciation reserve, instead of being obtained from banks or shareholders, must now be returned and devoted to the uses for which the fund was created. To obtain this money for replacement purposes above outlined it will be necessary to sell stock on the open market, or to pay, existing additional earnings of about \$45,000 annually.

The company is also under the necessity of providing additional revenue to meet the changed labor conditions of the community. The rate of wages during the period since the judgment of the board was delivered has increased about eighty per cent. During the period of the war the increase was much more marked than in the preceding years, and in view of the extraordinary conditions which then prevailed the company had to conduct its business with as little increase in the number of employees as possible. Because of this restriction, the plant has not received the supervision or maintenance which it requires. This is evident from the fact that in 1911 the labor cost per station for operating, maintenance and depreciation was \$8.46, while in the first six months of 1919 it was at the rate of \$12.74 per year, an increase of only about 54 per cent. To emphasize the run-down condition of the plant from a maintenance standpoint at the present time, your petitioner desires to point out that in 1911 the total maintenance cost per station, including labor and material, was \$6.88. In 1918-19 the cost for these items was exactly the same showing no increase in money spent to maintain the plant. As during the period covered, owing to the rate of wages being increased about eighty per cent., and prices of materials having increased over 100 per cent., it will be the least maintenance work must of necessity have been done in order to have kept the maintenance cost per station down to the same figures as in the years when costs were lower.

In the fiscal year ended March 31, 1919, the revenue per station was \$30.96, while the expense amounted to \$25.78, showing a net revenue of \$5.08 per station during a period when maintenance has been neglected and when, consequently, seriously affecting the service had to be practiced. If the expenditure on maintenance had been kept up during the war period to the actual requirements of the plant, or in other words, if as much material used as in pre-war days, at the increased cost of eighty per cent. in labor and 100 per cent. in material, the actual cost per station in the fiscal year ended March 31, 1919, would have been \$20.50, leaving a net revenue of twenty-six cents per station available for dividends. It is essential that this increase in maintenance should now be made; otherwise, the plant must be depreciated in value and rendered greatly less capable of giving the service which the public demands and to which it is entitled. Besides this the employees of the company must in future be paid an increase in wages aggregating \$72,000 yearly, in addition to this a substantial increase in the number of employees is imperatively necessary.

The following is the estimated financial position of the company for the next twelve months, from November 1, 1919, calculated per station:

Operating, maintenance, general expenses and depreciation figured on basis of actual cost for the last six months.....	\$26.98
Increased maintenance wages and material required to keep plant up to standard.....	4.93
Increase in wages.....	3.00
Return on investment at 100 per station.....	8.00
	\$42.90
Revenue per station under present rates.....	\$1.64
Average increase per station required.....	\$11.16

COUNTY LOCAL HOUSING BOARD

We are prepared to receive applications for loans on houses now in course of erection or contemplated by private parties in the County of St. John. Application forms may be had by applying to P. O. Box 668, or to Thomas K. Sweeney, Secretary-Treasurer, 109 Prince William Street, City.

ALEX. WILSON,
Chairman.

which for 23,700 stations now in use amounts to \$264,492.

It is evident, therefore, that the company, whose revenue for 1918-19 was \$490,010.95 is faced with the necessity of an increase of about forty per cent. of the amount. Part of this increase must be borne by the long distance system whose earnings have been included in the calculation of revenue per station. The remainder must be equitably distributed among other telephone users. The company presents herewith new schedules which it is estimated will provide the necessary revenue. The increase required will not, of course, be \$11.16 for each telephone in use, but will be a distribution of that amount per station over the whole business of the company, both exchange service and long distance.

Your petitioner desires to point out that its present average revenue per station is \$31.64—with the proposed addition it would be \$42.90. In the province of Nova Scotia the Public Utilities Commission has recently authorized an increase of the revenue per station of the Maritime Telephone Company to an average of \$50.88 for precisely similar causes. The necessity of early consideration of this case is due to the fact that our company in the public interest has postponed the rebuilding of important parts of its system during the war period, hoping for an early termination of the struggle and a return to normal prices, so that we have now arrived at a stage when postponement of action can no longer be considered. We must at once proceed with the work and in order to do so large sums of money must be secured from the public, not only to carry out our rebuilding and maintenance programme, but in order to carry on telephone development in all parts of the province, particularly in the construction of toll lines. In the year 1918-19 the company did not earn its dividends by \$17,478.06. Unless early action is taken by the commission the year 1919-20 which ends on March 31, 1920, will witness a serious impairment of the company's power to pay dividends.

Facing as the company does the necessity of raising large sums of money, it is imperative and cannot be too strongly urged upon this board:

1. That your board may declare that the company requires an additional net revenue of \$264,492 or such sum as in the opinion of the board may be necessary.

2. That your board may order that the schedules of tolls and charges here-to annexed be adopted in lieu of those present in force.

And your petitioner as in duty bound will ever pray, etc.

Dated this 17th day of December, 1919.

THE NEW BRUNSWICK TELEPHONE COMPANY, LIMITED
By (Sgd.) A. W. McMackin,
Secretary-Treasurer.

The following is the new schedule of rates as affecting St. John:

Group VI, exchange service rates. Applying in exchanges with \$500 to \$1,000 subscribers stations. Free mileage—One mile from arbitrary centre.

Unlimited Exchange Service. Rate per year.

1-party line.....	\$36.00
2-party line.....	\$50.00
3-party line.....	\$70.00
Farmer line.....	\$42.00

Measured exchange service. Rate per month. 1-party line, guarantee, including 60 exchange messages available during the month, business \$3.00; residential, \$2.00.

Next 100 messages used during the month, 3 cents each.

All over 100 messages used during the month, 2 1/2 cents each.

All calls under measured service shall be on the "pay as you dial" method.

In the case of measured service, all calls for "information" other than those

proper service charges—having to do with matters between the subscriber calling and the company, shall be treated as calls subject to regular message rates.

When the average number of completed calls per day for five consecutive days in any week as found by the board of commissioners of public utilities or its agent from a flat rate station exceeds in the case of: 1-party line, 15 per day; 2-party line, 12 per day; 3-party line, 8 per day; the contract for such flat rate service, after the notice hereinafter prescribed has been given to the subscriber, shall be terminated and service thereunder discontinued.

Upon a count of the completed calls being made by the board or its agent showing that the completed calls from any flat rate station exceed the number set out above, such finding shall be communicated to the company.

The company shall thereupon give such subscriber ten days' notice in writing to the effect that his contract for flat rate service with such line will, on the first day of the month succeeding the expiry of such notice, be terminated and service thereunder discontinued. From such day such subscriber's contract shall be terminated and such service discontinued.

In the event of a contract being terminated as above any new contract taken thereafter from such subscriber shall be for service of a higher class or for measured service, as the case may be.

Settlement of all service to be on a monthly basis.

Pay station services:

1-party line—Monthly guarantee \$3; commission of 20 per cent. on revenues from exchange toll service in excess of \$3.00 per month, plus 10 per cent. on local tolls and long distance messages not to exceed 10 cents on any one message.

4-party line—Monthly guarantee \$2.50; commission of 20 per cent. on revenues from exchange toll service in excess of \$3.00 per month, and 10 per cent. on local tolls and long distance messages not to exceed 10 cents on any one message.

Receiving line service—1-party line in connection with measured service, \$30 per year.

The rate quoted is for standard wall set. Additional charge for desk set \$1.20 per year; flexiphone \$2.40 per year.

SUSSEX PERSONALS

(Sussex Record.)

Mr. and Mrs. Harry Wallace returned from a trip to Boston and New York.

Mr. and Mrs. Burton Corey and children of 11, are guests of Mrs. Corey's parents, Dr. W. H. White.

Albert A. McFadden of Cabano, P. Q., and Fred A. McFadden of St. John were in town this week, called here by the death of their mother, Mrs. Annie McFadden.

Mr. and Mrs. Walter F. Lutz announce the engagement of their daughter, Ida Beatrice, to John Masters Barton of Torryburn, wedding to take place in January.

Sydney L. Reddie of Sydney, Man., is here on a visit to his sister, Mrs. Fred Nettell.

Mrs. George Hope of Sussex Corner intends leaving for England on Saturday, where the purpose is spending several months.

SACKVILLE PERSONALS

(Sackville Tribune.)

R. G. Sharp of St. John is acting as teller in the Provincial Bank here.

Mr. Scar of Sussex is taking Mr. Smith's place as teller in the Royal Bank. Mr. Smith leaves in a few days for Halifax.

Miss Edith Fisher of Gardner, Mass., is in Sackville, being called here by the death of her mother, the late Mrs. Orminda Fisher.

Mrs. W. W. McAndrews, formerly of

Sackville, has become a member of the Regina collegiate board without having to go through the anxieties of an election.

BROOKLYN POLICEMAN AFTER A CHASE ARRESTS ANOTHER

New York, Dec. 20.—One Brooklyn policeman chased another for several blocks, arrested him and charged him with breaking into a showcase with a

burglar's "Jimmy" and stealing women's wearing apparel from it early today.

Patrolman Louis J. Hahorst, who is said to have been on the force nine years, was the officer arrested. He was immediately suspended from duty. Hahorst was in uniform, although off duty.

Hahorst's wife said she could explain her husband's alleged theft only by the fact that the Yuletide was near and "his salary was too small to give their sick little girl a good Christmas."



Money Talks

But it says more here at Christmas because it goes further than elsewhere. We handle the best footwear at right prices.

Here are a few of our Special Values for the Christmas Shopper:

Ladies' Black Gaiters, leather bound.....	\$1.75
Ladies' Fawn Gaiters.....	
Ladies' Grey Gaiters.....	
Ladies' Brown Gaiters, 10 button, \$2.00; 12 button, \$2.75.....	
Ladies' Storm Rubbers.....	85c.
Ladies' Brown High Cut Boots, Neolin Soles and Rubber Heels.....	\$6.00
Men's 4 Buckle Overboots.....	\$3.85
Men's Felt Boots, heavy felt soles.....	\$4.50 and \$5.50
Men's Military Overboots, 2 buckles, just the thing for Daddy or Brother for working.....	\$2.50
Youths' Rubber Boots, sizes 11, 12 and 13.....	\$2.85
Boys' Hockey Boots.....	\$3.00 to \$5.00

Years of giving our best service and value for the customer's money have made this store a favorite for holiday shopping.

Gray's Shoe Store

397 MAIN STREET

Notice From Santa Claus

Dear Friends:—

I have visited most of the stores of this city in search of gifts for Christmas and I have found that I cannot better the prices offered at TOBIAS, 233 Union Street. When asked why his prices were so low he stated that he made but little profit and that his expense was very small. If you look at the prices below you will be convinced that I am right. Give him a try for quality and prices.

FOR LADIES	
Crepe-de-Chine Waists.....	From \$2.75 to \$4.98
Volle Waists.....	From \$1.35 to \$2.48
Kimonoes.....	From \$2.65 to \$6.30
Skirts, Serge and Silk Poplin.....	From \$3.98 to \$5.50
Sweaters.....	From \$3.98 to \$7.25
Leather and Silk Handbags.....	From \$1.25 to \$3.50
Underskirts, all colors, hand made Lace and Tams at Very Low Prices.....	
FOR GIRLS	
Serge Dresses, 8 to 12 years.....	From \$7.98 to \$9.50
Gingham Dresses.....	From \$1.80 to \$2.75
Coats, 8 to 12 years.....	From \$6.50 to \$8.50
Sweaters.....	From \$1.98 to \$3.50
FOR BOYS	
Coats, 3 to 6 years.....	\$5.98
Sweaters.....	From \$1.48 to \$2.48
Shirts.....	79c.
Suits, Limited Quantity.....	From \$5.25 to \$7.98
Teddy Bear Suits.....	From \$3.48 to \$3.98
FOR MEN	
Suits, Limited Quantity.....	From \$15.00 to \$23.00
Sweaters.....	From \$2.98 to \$7.50
Fancy Dress Shirts.....	From 98c. to \$2.75
Neckties.....	From 50c. to \$2.10
Dress Gloves.....	From \$1.90 to \$2.45
Leather and Woollen Gloves and Mittens.....	From 48c. to \$1.48
Mufflers, Woollen and Silk.....	From \$1.25 to \$2.85
Woollen Underwear.....	\$1.59
Fleece Underwear.....	98c.

We have a limited quantity of Boots, Shoes and Rubbers for all to clear at Lower than Wholesale Prices. 12-21

TOBIAS, 233 Union St.

Girls! Your hair needs a little "Danderine"—that's all! When it becomes lifeless, thin or loses its lustre; when ugly dandruff appears, or your hair falls out, a 35-cent bottle of delightful, dependable "Danderine" from any store, will save your hair, also double it's beauty. You can have nice, thick hair, too.