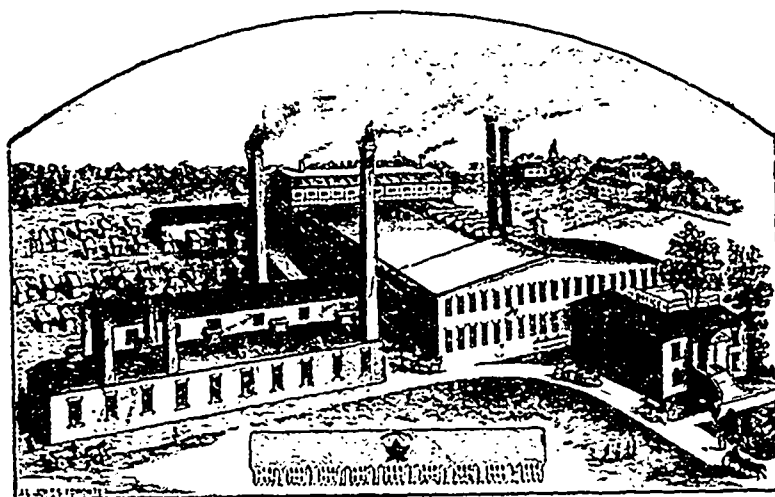


*** THE ***
**MAPLE LEAF
 SAW WORKS**

**Shurly &
 Dietrich**
 GALT, ONT

Manufacturers of

**CIRCULAR SAWS
 GANG SAWS
 MILL SAWS
 BAND SAWS
 CROSS-CUT SAWS**



Manufacturers of

**HAND SAWS
 BUCK SAWS
 PLASTERING TROWELS
 BUTCHER SAWS
 STRAW KNIVES, &c.**



GROUND THIN ON BACK

Save Labor Save Gumming
 Save Time Save Files

This Saw Stands Without a Rival

AND IS THE

FASTEST CUTTING SAW IN THE WORLD!

Its Superiority consists in its Excellent Temper. It is made of "Razor Steel," which is the finest ever used in the manufacture of Saws. We have the sole control of this steel. It is tempered by our secret process, which process gives a keener cutting edge and a toughness to the steel which no other process can approach.

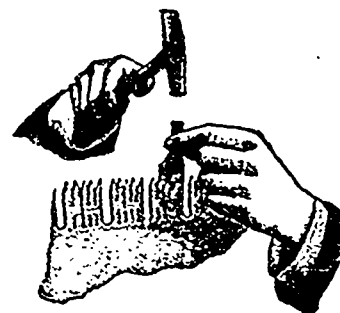
Maple Leaf Saw Set

MANUFACTURED BY

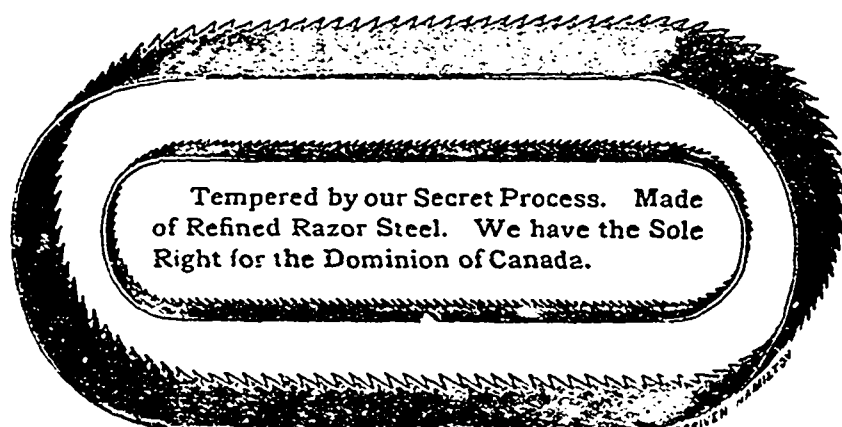
SHURLY & DIETRICH, Galt, Ont.

Directions. — Place the set on the point of tooth, as shown in the accompanying cut, and strike a very light blow with a tack hammer. If you require more set, file the tooth with more level.

If you file too much you will not make a mistake. Be sure and not strike too hard a blow and it will set the hardest saw. On receipt of 40 cents we will send one by mail.



We are the only manufacturers in the world who export Saws in large quantities to the United States.



We Manufacture

HIGH GRADE BAND SAWS

of All Widths and Lengths.

These Saws are made of Refined Swedish Steel imported direct, and tempered by our Secret Process; for Fine Finish and Temper are not excelled.