

Planet Flat Opening Blank Books.

are in the largest Banking and Mercantile Houses in Ontario. They are the cheapest, and none are better. Estimates promptly furnished. Send for our circulars.

PLANET PUBLISHING & BOOKBINDING HOUSE,
CHATHAM, ONT.

Direct Importers of Ledger Papers and Leathers.

BRIGDEN, PROP. GEO. BRIGDEN, MANGR. F.H. BRIGDEN, O.S.A. ART SUPERINTENDENT

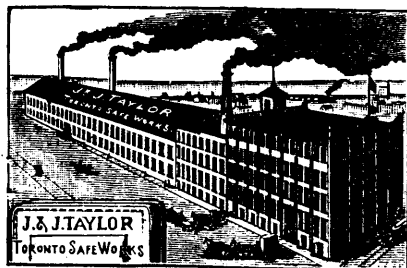
**THE
Toronto
Engraving
Co.**

92 BAY ST.
PHONE 2893

DESIGNERS &
ENGRAVERS
BY ALL
PROCESSES

KING IRON WORKS
BUFFALO, N.Y.

Marine Engines



ESTABLISHED 1855

TAYLOR'S
DOUBLE TONGUE & GROOVE
SAFES

145
&
147 FRONT ST. EAST. TORONTO.
THOMAS WEST, ROBERT MCCLAIN.



FAC-SIMILE OF
WHITE LABEL ALE

The Dominion Brewery Co. LIMITED BREWERS AND MALTSTERS TORONTO

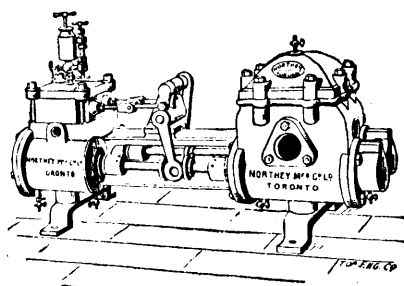
MANUFACTURERS OF THE

Celebrated **White Label Ale**

Ask for it and see that our Brand is on every cork. Our Ales and Porters have been examined by the best analysts, and they have declared them Pure and Free from any Deleterious Ingredients.

WM. ROSS, Manager

Old Pumps Waste Steam



And mean a large annual excess in coal bills. Too little attention is apt to be paid the pumping plant and prominent engineers are demonstrating that enormous yearly losses are the result.

The Northey Duplex Pump

offers the best combination of durability and economy in service of any pump in the market. Strongly heavily made, strictly modern and guaranteed in every detail. We manufacture pumps of every description for every conceivable duty. Send for new free catalogue.

THE NORTHEY CO., Limited, 1050 King Street Subway, Toronto, Canada

JOSEPH GILLOTT'S Gold Medals, Paris, 1878: 1889.

Of Highest Quality; and having Greatest Durability, are therefore **CHEAPEST.**

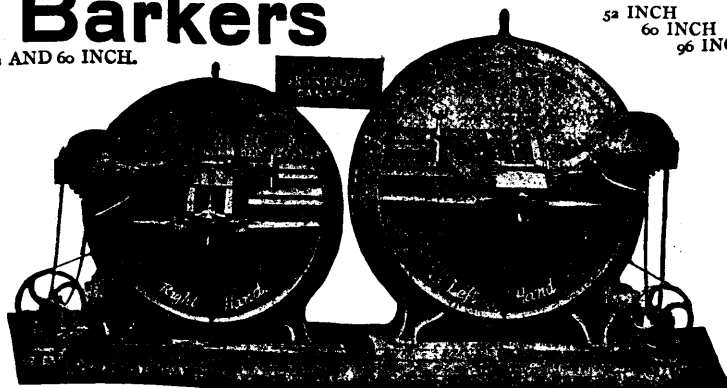
No. with exquisitely Fine Points, for ARCHITECTS, ENGINEERS, and DRAUGHTSMEN—170, C179, 291, 303, 431, 659, 1000.

PENS

Pulp Wood Machinery Barkers

52 AND 60 INCH.

52 INCH
60 INCH
96 INCH



Heavy machines, thoroughly well made, for fast continuous service—made either hand, down or up delivery, **WITH OUR** cutting up rig a men handle 100 to 125 cords per day, taking logs from water, delivering cut wood to barkers in any length. Special cross cut machines also supplied for handling shorter or smaller wood.

Save Your Slabs Bark them on our 96-inch Barker—when they make perfect pulpwood. Tons of Link Belting for handling and conveying kept constantly in stock.

WATEROUS,
BRANTFORD, CANADA