



THE FENSOM ELEVATOR WORKS,

38 DUKE STREET [Head of Frederick St.],

TORONTO.

Manufacturers of

ELEVATORS,

HAND, STEAM & HYDRAULIC,

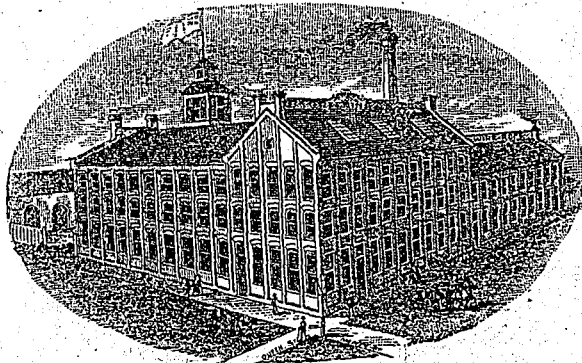
For Light or Heavy Work.

In Factories, Hotels, Warehouses, &c.

Estimates Furnished.

VICTORIA WIRE MILLS.

ESTABLISHED 1859.



B. GREENING & CO.

MANUFACTURERS OF

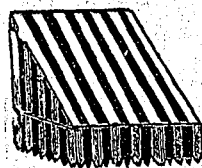
Perforated Sheet Metals,

Wire Cloth, all Grades,

Galvanized Poultry Netting,
Steel and Iron Ropes,
Bank and Office Railing.

Wire work in all its branches.

HAMILTON, ONT.



AWNINGS

FOR
Stores or Private
Dwellings.

LOCKSMITH,
BELL-HANGER,
and General Blacksmith
work.

James R. Bain, 13 St. John St., MONTREAL.

THE

Most Practicable Chair EVER MADE!

Can be put in any position while sitting in it; quick
and easily adjusted; not liable to get out of
order; well adapted for invalids;
back and foot-rest working
separately.

The only Chair having an Ad-
justable Head Rest.

C. E. ANDERSON,

Inventor and Patentee,

68 DUNDAS STREET,

LONDON EAST, ONTARIO.

Send for Price List and Catalogue. Mention this
paper.



MILITIA.

SEALED TENDERS, marked on the left hand
corner of the envelope, "Tenders for Militia
Clothing, Store Supplies and Necessaries," ad-
dressed to the Honorable the Minister of Militia
and Defence, will be received up to noon of Monday,
the 18th May, 1885.

Printed forms of tenders, containing full par-
ticulars, may be obtained from the Department
at Ottawa and at the following Militia Stores,
where also sealed patterns of all articles may be
seen, viz:—The offices of the Superintendents of
Stores at London, Toronto, Kingston, Montreal,
Quebec and St. John, N.B.

No tender will be received unless made on
printed forms furnished by the Department.

The material of all articles will be required to
be of Canadian manufacture and Canadian work-
manship.

Each tender must be accompanied by an
accepted Canadian bank cheque, for an amount
equal to ten per cent. of the total value of the
articles tendered for, which will be forfeited if
the party making the tender declines to sign a
contract when called upon to do so, or if he
fails to complete the service contracted for. If
the tender be not accepted the cheque will be re-
turned.

The Department will not be bound to accept the
lowest or any tender.

C. EUG. PANET,

Deputy of the Minister of
Militia and Defence.

OTTAWA, 30th April, 1885.



Canadian Pacific Railway.

THE NEW LINE, MONTREAL AND TORONTO VIA OTTAWA,

WINTER TIME TABLE,

IN EFFECT ON

MONDAY, Nov. 24, 1884.

TIME TABLE.	Morning Express.	Night Express.
Leave Montreal	8.40 A.M.	7.30 P.M.
Arrive Ottawa	12.03 P.M.	11.00 P.M.
Leave Ottawa	9.55 P.M.	8.30 A.M.
Leave Toronto	8.25 A.M.	7.55 P.M.
Arrive Ottawa	6.07 P.M.	5.11 A.M.
Arrive Montreal	9.42 P.M.	8.50 A.M.

Elegant Parlor Cars on day trains. Luxurious
Sleeping Cars on night trains.
Close connection at OTTAWA with trains to and
from

SUDBURY, NORTH BAY, PEMBROKE, REN-
FREW, ARNPRIOR.

and all points in the Upper Ottawa Valley. Con-
nections at Toronto for all points WEST, SOUTH
and NORTHWEST.

Only line running direct into the City of Kingston
(via K. & P. Railway), avoiding long and tedious
omnibus transfer.

For full information regarding Time Tables of all
Through and Local Trains. Tickets, Seats in Parlor
Cars, Berths in Sleeping Cars, &c., apply at the
Company's City Ticket Office,

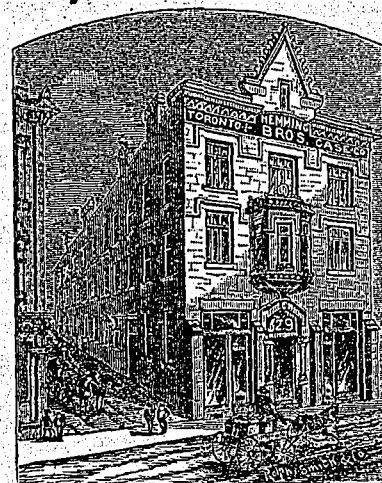
266 ST. JAMES STREET,
(Corner MCGILL STREET.)

Windsor Hotel Ticket Office, Quebec Gate Station,
Exchange Office, opposite Bonaventure
Depot, 523 St. James St.

Toronto Case Co.

29 ADELAIDE ST. EAST.

Fancy Goods Manufacturers.



LATEST STYLES! ORIGINAL DESIGNS!!
FINEST MATERIALS!!! Thoroughly skilled
labor. Toilet, Odor and Jewel Cases, Whisk
Holders, Plush Goods of all kinds. The only
First-Class Line of Jewelry Cases and Trays
offered in Canada.

HEMMING BROS.,

The only Canadian Manufacturers who make a
specialty of Travellers' Trays and
outfits generally.