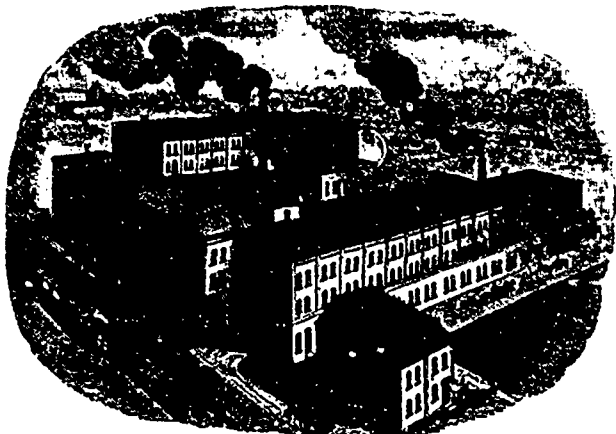


FORT WAYNE ELECTRIC CO.

MANUFACTURERS OF THE

WOOD ARC & SLATTERY INDUCTION SYSTEM

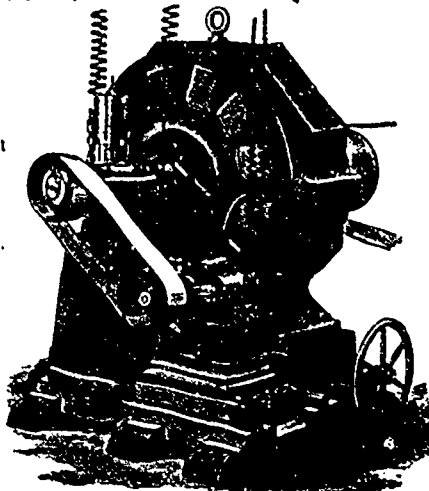
FOR LONG DISTANCE INCANDESCENT ELECTRIC LIGHTING.



WORKS AT FORT WAYNE, IND.

References in Canada:

- Halifax Gas & Electric Light Co., Halifax, N.S.
- New Glasgow, Nova Scotia
- The New Brunswick Electric Light & Power Co., St. John, N.B.
- Electric Light & Power Co., Woodstock, Ont.
- W. H. Comstock, Brockville, Ont.
- Electric Light & Power Co., Port Hope, Ont.
- Electric Light & Power Co., Cobourg, Ont.
- Corporation of Collingwood, Collingwood, Ont.
- Niagam Falls Electric Light & Power Co., Niagam Falls, Ont.
- Kingston Electric Light Co., Kingston, Ont.



"SLATTERY" DYNAMO AND EXCITER.

Toronto Office, -- 188 King St. West.
 New York " - - 155 Broadway.
 Buffalo " - - 228 Pearl St.

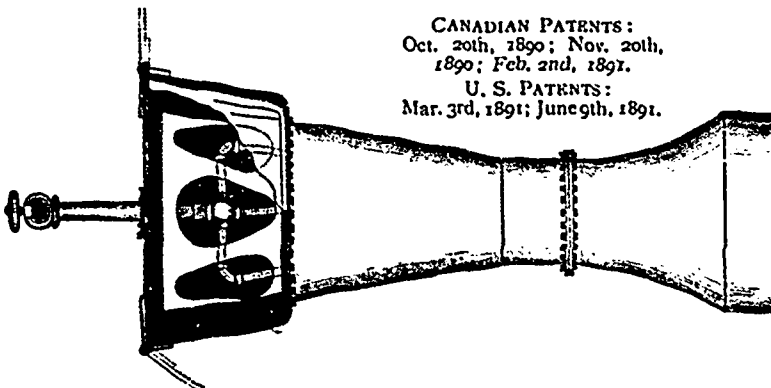
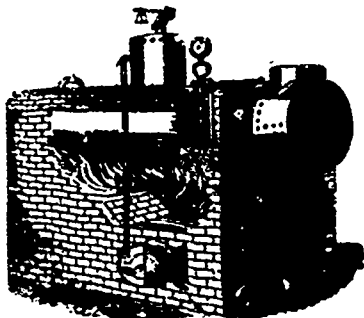
W. J. MORRISON, - - General Agent.
 (New York State and Canada.)
 THOMAS COOPER, - - Special Agent.

EARLE'S AIR AND STEAM INJECTORS

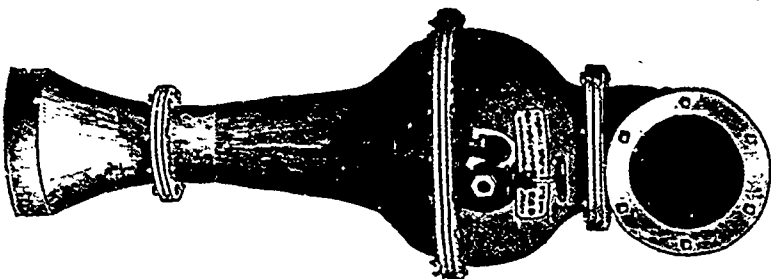
FOR PERFECT COMBUSTION OF FUEL IN FURNACES AND ABATING SMOKE.

FOR
 Stationary,
 Marine,
 AND
 Locomotive
 Boilers
 AND
 Producer
 Gas Cupolas

Will burn successfully hard and soft coal screenings, tan bark, sawdust, coke screenings, cancell-coke, etc.



CANADIAN PATENTS:
 Oct. 20th, 1890; Nov. 20th, 1890; Feb. 2nd, 1891.
 U. S. PATENTS:
 Mar. 3rd, 1891; June 9th, 1891.



COMBINED AIR INJECTOR AND EXHAUSTER.

AIR INJECTOR.

THOROUGHLY TESTED AND FOUND TO MEET EVERY REQUIREMENT.

Circulars with testimonials on application.

MANUFACTURED AND FOR SALE BY

S. R. EARLE

Belleville, - Ont.

Please mention the CANADIAN ELECTRICAL NEWS when corresponding with advertisers.

COPPERINE

Superintendent's Office, Water Works Dept.,
 TORONTO, January 6th, 1891.

ALONZO W. SPOONER, ESQ.,
 Port Hope, Ont.

DEAR SIR. I am pleased to say that after nearly three years constant use day and night on our largest engine your Copperine has stood its work well. I have not had to renew any of the heavy bearings yet, so I consider that speaks for itself. I am pleased to recommend it to any one in need of metal to stand heavy work.

I am, yours truly,

J. C. FERGUSON,

Chief Engineer Toronto Water Works.

