

---and the Worst Is Yet to Come

RECOMMENDS SLATTER
AS PHYSICAL DIRECTORBoard of Education Committee
Repeals Decision to Appoint
Bandmaster

After more or less discussion the finance committee of the board of education Saturday afternoon decided to again recommend the appointment of W. A. Slatter, bandmaster of the Seventh Regiment, as physical training supervisor for the schools, at a salary of \$75 a month, on a trial term of four months, commencing March 1.

The question of such an appointment was taken up by the committee at a former meeting, and it was recommended to the board that Slatter be engaged at a salary of \$800 per year. However, when the recommendation came in representatives of the Trades and Labor Council, who were present, protested against the selection of a "military" man for the position. It was also thought that more information should have been secured before closing the matter.

It has since developed that the proposed appointee is a union man, and that organized labor did not back up the three representatives who appeared at the board of education's meeting.

Will Not Be Military. When the question was again taken up it was pointed out that the physical training supervising would not be military in any sense. Some of the trustees thought that the appointment of such a supervisor was only incurring an unnecessary expense, but it was finally decided to give the idea a trial.

The question of appointing assistants to conduct outdoor classes, and thus relieve the crowding in some of the more congested schools, will be dealt with later.

The application of Alexander Meyer, manual training teacher, for a salary increase, was also laid over.

Five Would Succeed Nurse. Miss E. Blanche Rowe, Miss Annie Grieve, Miss Isabelle Wilson, Miss Marion E. Nash and Mrs. W. D. Stock made application for the position of school nurse, in succession to Miss Barbara Gilchrist, resigned. It was decided to recommend the name of Miss Nash, and also that of Miss Rowe as a third nurse, it being pointed out that at least three nurses were necessary to cope with the work. The intimation was given that a permanent doctor and four assistant doctors were necessary, but the committee decided that such an expensive step could not be taken at the present time.

The Double Work
of the Blood

The circulation of the blood is one of the most perfect pieces of mechanism in the universe. Besides carrying nourishment to every part of the body, the blood collects the waste products and passes through the kidneys in order that these poisons may be eliminated.

Hence you see the tremendous importance of keeping the kidneys in healthful working order so that they free the blood from these impurities before they find lodgment in some weak spot and set up serious disease.

Aching back and aching head, troubles with the digestion, deposits in the urine, constipation and biliousness—such are the symptoms which indicate the need of Dr. Chase's Kidney-Liver Pills. The liver is awakened to action, the bowels regulated, and the kidneys made vigorous in their work of purifying the blood.

In the great majority of homes Dr. Chase's Kidney-Liver Pills are kept at hand for use in just such cases. They save many doctor bills, and by keeping the digestive and excretive systems in health do much to prolong life and bring comfort in old age.

Make-Man Tablets

MEAN PURE BLOOD.
50c each; \$ for \$2.50.

Geo. A. McLachlan
399 RICHMOND STREET, N.Y.

Miss Phyllis Burdick, present assistant school nurse, receives \$700 per year, and Miss Gilchrist \$900. Miss Burdick will probably be appointed head nurse, with Miss Nash and Miss Rowe as assistants.

To Attend Convention. Inspector C. E. Edwards was authorized to attend a convention of school superintendents to be held in Richmond, Va., at the end of this month. The matter of free text books will be taken up later.

The building committee will be asked to make provision for the enforcement of the regulation requiring that the boys and girls must be separated on the school playgrounds.

CORN GROWERS WILL
CONSIDER SUGGESTION

But Secretary Edwards Feels
London Is Too Far East
For Corn Show.

[Special to The Advertiser.]
Chatham, Feb. 8.—The suggestion of London men that the Ontario Corn Growers' Association join in a winter fair in the Forest City does not meet with a very hearty reception by members of the association. It is felt that London is too far away from the centre of the corn country, and that men who today take an active interest in the welfare of the organization would not be at all active or enter the exhibition as contestants.

The majority of the exhibitors come from Kent and Essex Counties, and for that reason it is felt that the annual show should be held in either of these two counties.

Secretary's Views. When asked about the matter yesterday, Secretary W. E. J. Edwards said: "This is a matter that the executive will have to deal with. I have heard from Mr. Philip, but naturally am not in a position to give him a definite answer, although I told him that I felt London was too far east for a corn show. London would have to make an exceptionally big offer to host the show, for even though it does take a large amount of money to operate the show, the money paid is not the first or greatest consideration in my opinion."

Object of Organization. We do not aim at accumulating a surplus, but rather to do the greatest possible amount of good for the corn raisers of the country. We have been doing good and we are sure, for we can tell by the exhibits that are sent in. We are working to have the farmers in the corn country eliminate the mongrel strains, and to reduce the varied number of kinds of corn raised. We want them to select the best strains for this country, and then devote their attention to these strains. We are meeting with success, and the farmers all appreciate what we are doing, and it would, I think, be a mistake to do anything that would tend to reduce the interest the corn growers might take in the proposition. I, of course, am only stating in personal view, and want it understood that the matter must be decided by the executive. I am sure that they will give it careful consideration." The location next year's show has not been decided upon, and likely will not be for some months.

Queen Alexandra's Favorite
Portrait of Edward VII.



This marble bust of the late King was unveiled recently by Prince Arthur of Connaught at the new Middlesex Guildhall, Westminster.

MANY SUFFOCATED
IN CUMBRE TUNNEL

Over Fifty Lost Their Lives As
Result of Castillo's Act
in Mexico.

[Canadian Press.]
Juarez, Feb. 8.—The nine Americans and 40 or 50 Mexicans, whose fate has been a mystery since the destruction of the Cumbre Tunnel last Wednesday, were suffocated. This information has been received at the headquarters of the Mexican Northwestern Railroad. The tragedy is laid at the door of Maximo Castillo, the bandit leader.

The exact number of persons aboard the passenger train, which consisted of one first-class, two second-class coaches, a baggage and express car, and a freight car, is not known. First reports put the number at 35, while a request came in for 75 coffins. This evidently was an estimate, however, as the searching party, led by Dr. F. C. Herr, of Matamoros, was unable to penetrate far enough into the tunnel to count the dead.

Bodies Strawn Through Tunnel. These, it is expected, will be found strewn along the poisonous reaches of the tunnel, where they fell in attempting to escape.

WHERE THEY CAME FROM

Interesting Table Showing Port
of Departure of Passengers Landed
in New York.

William Fulton, city ticket agent of the C. P. R., has received an interesting table of the number of passengers who entered United States through the port of New York last year. It shows where they came from and the steamship line that brought them over.

Line	Where From	Total
North German	Bremen	175,993
Hamburg-American	Hamburg	162,937
Reg Star Line	Antwerp	89,753
French Line	Havre	91,248
Holland American	Rotterdam	69,747
Cunard Steamship	Liverpool	77,421
Co., Limited	Fiume	46,658
Fabre Line	Mediterranean	41,007
Austro American	Trieste	42,258
S. S. Co., Ltd.	Mediteranean	42,221
Lloyd	Genoa	32,594
Navigatione Gen-Mediterranean	Genoa	32,594
Scia Americana	Liverpool	43,496
Lloyd Italiano	Mediteranean	28,186
Russian American	Libau	28,627
Russian East Asiatic Steamship Co., Ltd.	Southampton	41,047
La Veloce	Southampton	21,032
Lloyd Sabaud	Mediteranean	26,868
American Line	Glasgow	33,920
Hamburg American	Mediteranean	22,297
Anchor Line	Mediteranean	15,563
Scandinavian	Copenhagen	19,355
Italiana Società Di Navigazione	Mediteranean	12,830
Uranium Steamship Co., Ltd.	Rotterdam	11,127
White Star Line	Mediteranean	9,556
Belgian Trans.	Mediteranean	5,243
Lampart & Holt	South America	7,191
National Steam	Mediteranean	3,329
Nav. Co., Ltd.	Mediteranean	3,335
Norwegian American Line	Christiania	2,953
Campbell Trans.	Mediteranean	754
Atlantic Trans.	London	4,099
Miscellaneous		63,991
		1,328,216

MOST ECONOMICAL
HOUSE OF REFUGE

[Special to The Advertiser.]
Clinton, Feb. 8.—Huron County claims the honor of having the best and most economical house of refuge in the province. The institution is located just outside the town of Clinton and at the present time has 96 inmates, three being added today. The cost of feeding these patients, by scientific management, has been reduced to 9.2 c. per day each, and the keeper is prepared to wage that no better victuals are doled out in any such institution in Ontario.

Mr. and Mrs. Robert Mutch are in charge of the institution, with Mrs. Parfitt as assistant, and the house is very well managed. There is a large farm in connection with the house, and no inconsiderable revenue is derived from the sale of produce.

The question that confronts the authorities at the present time is that of accommodation. With 96 inmates the house is overcrowded, and extra room will have to be provided at once. The house of refuge committee, consisting of Warden David Cantelon, of Clinton, Dr. Clark, of Goderich, Reeve, of Goderich, and Wingham, of Goderich, met here this afternoon and discussed the matter with a view to a decision. Another conference will be held shortly to go into the matter further.

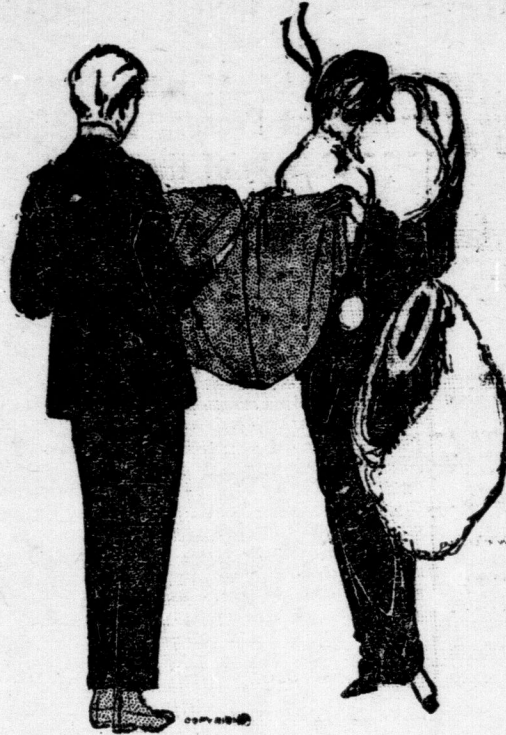
The Huron County authorities are taking up the idea of relieving the congestion in the house of refuge, by number of county insane patients who are not dangerous. Already one or two local patients have been brought home in this way, and with further proposed to provide, it is anticipated that many others may be looked after.

HORSE WAS KILLED BY CAR
Lad Who Was Driving, Escaped
Unhurt in Accident Near
Lambeth.

[Special to The Advertiser.]
Lambeth, Feb. 8.—William Brown, a lad living south of Lambeth, had a narrow escape from probable death, when the horse he was driving was struck and killed by a London and Lake Erie car at Stop H, on the London and West Sunday gravel road, Saturday evening.

Young Brown apparently did not notice the approach of the southbound car leaving London at 5:30, and before the motor-man could apply the brakes the horse was on the track and the accident had occurred. The animal was not killed out-

Phone Forty-four Hundred | Smallman & Ingram, Ltd. | Store Closes at 6 p.m.

BUYING DIRECT FROM FIRST HANDS
LOWERS THE COST OF MERCHANDISE

In all circles the world over the high cost of living, or cost of high living, is a live topic for discussion, the blame being placed at many different doors—speculators, storage, monopolies, administrations and many other big factors in the world's commerce are charged with a certain amount of responsibility for present conditions.

Another Shipment of Those Novelty
Plaid Skirtings

The very latest novelty of the season in Dress Goods so beautifully adapted for the present style skirts, two handsome designs just received, dark green colorings, the material is very wide, 56-inch, and we are selling as short as 1 1/4 to 1 1/2 yards of same for skirt, beautiful soft finish, superior quality, yard \$1.50 and \$1.75
Samples Mailed on Request.

Many lines of New Spring Dress Goods have been pressed into stock this week, in colors: black and black and white. See New Spring Novelties.

New English Prints Are Here

We have just opened our spring shipment of English Prints. All ready for the February sewing. The widest range of colors and designs we have ever shown at this early date. All the daintiest spots, stripes, checks, sprigs and floral effects. All the newest designs are in this assortment, white, navy, light and dark butchers' blue, red, brown, green, lilac, gray, and blue gray; also black and white, in great variety.

These Prints are soft and free from dressing, a very fine, yet very firm cloth, and warranted fast colors. Best English dye. A few white grounds are shown, with colored designs and 3-inch border, suitable for Kimonos or Dressing Sacques.

"HARD TO BEAT" Brand—32-inch width, best quality, yard 15¢
"PELLAT CLOTH"—30-inch width, fine quality, yard 12 1/2¢
Samples on request to Mail Order Customers.

Ladies' Spring and Summer Under-
wear Now In

Many have been inquiring for the new Swiss Knitted Goods, in lisle, cotton and porous-knit. We have just passed into stock our first spring shipment, amongst which are these wanted lines:

Swiss Ribbed Lisle Vests, low neck, sleeveless or short sleeves 25¢
Porous-Knit Cotton Vests, low neck, sleeveless or short sleeves 25¢
Fine Cotton Vests, low neck, sleeveless or short sleeves, sizes 34 to 42 25¢
Fine Ribbed Cotton Vests, low neck, sleeveless or short sleeves, with torchon lace yoke, shaped at waist, cut sizes 50¢
Fine Ribbed Cotton Drawers, umbrella style, lace trimmed, all sizes 25¢
Fine Ribbed Cotton Combinations, low neck, short sleeves, tight knee, suit 35¢
Main Floor.

New Cottons for February Selling

RED CROSS APRON CLOTH—New stock just received of this special Apron goods. Many are waiting for this cloth. It is the kind that resembles pure linen in weave and finish. It has no equal at the price. If you have not used it get a sample; 2 yards wide, 35¢ yard. At Linen Counter.

Samples Mailed to Out-of-Town Customers on Request.

TWO SPECIALS IN FACTORY SHEETING

SPECIAL 32c YARD

Direct from the Lancashire Cotton Mills, made from the purest cotton yarns, beautiful clean finish, evenly woven, handles soft, when bleached out is white as snow. This is undoubtedly the best value in the trade, 72-inch, yard 32¢

SPECIAL 21c YARD

Single Bed Sheet, 64-inch, just the weight you will like, round thread, strongly woven for hard wear and free from specks, will bleach beautifully, special, yard 21¢
Main Floor.

WHITE CHAMOISETTE
GLOVES.

All sizes, 5/2 to 7 1/2.
Special Quality, 50c Pair.

SMALLMAN & INGRAM
LIMITED

IN THE RESTAURANT.

Chicken Patties, Bread and
Butter and a Cup of Tea or
Coffee, 3 to 5:30, 15c.

DOMINION POWER CO.
MAY PURCHASE RAILWAY

Talk of Its Buying the Grand Valley
and Brantford Lines.

[Special to The Advertiser.]
Brantford, Feb. 8.—There is a well defined rumor here given credence in circle and railway circles to the effect that the Dominion Power and Transmission Company, of Hamilton, which owns and operates many other electric lines, as well as the Western Counties Electric Company, is again negotiating for the purchase of the Grand Valley and Brantford Street railways and that when the bondholders meet next week, they will have an offer from that company as well as the one already received from Manager Kellett of the Lake Erie and Northern Railway Company, to consider.

"If the city of Brantford can prevent it, the Dominion Power and

Transmission Company will never get the Brantford Street Railway," said Mayor Spence. "We had enough of their methods of business in connection with the electric business and we do not want a repetition of it."

FOREST.
Forest, Feb. 9.—Miss Fern Ross, stenographer in the canning factory, Strathroy, is visiting at her home here.

Miss Gertrude Dunham, of Point Edward, is spending a few weeks here with her aunt, Mrs. Robt. Walker.

R. Karr has returned after spending a couple of weeks in Ottawa.

David McGregor, who has been with Maylor's Limited for the past four years, has accepted a position with K. M. Steven, of Grimsby.

The Star Bible Class and the Mission Circle, of the Methodist Church, were entertained at Sidney Manning's, Plympton, recently.

LEGAL QUERIES
SUBSCRIBER.—Could a neighbor compel an owner to trim a hawthorn hedge close up to the line if it was all planted on his own property? Of course, it is a nuisance to the neighbor, but is it a legal one? Some

of the hedge has always been trimmed. ANS.—Yes, all that encroaches on his land. Who should do the work, the owner or neighbor? ANS.—The owner.

OLD SUBSCRIBER.—Can the council or a contractor compel a man to remove his fence along the road when it is now on the line, for to dig a ditch for which he is taxed, or can they refuse to dig the ditch unless the fence is removed? ANS.—The council can compel you to do so, and if you do not do so after a reasonable notice in writing by the council or the inspector appointed for the purpose, and within the time specified in the notice the council or the said inspector shall and can forthwith cause the same to be removed and collect the cost with ten per cent added thereto, and the same shall be collected like other taxes subject to an appeal to the judge by the owner or occupant in respect of the cost of the work. They cannot refuse to dig the ditch, but must do so and proceed in the manner above stated.

DR. A. W. CHASE'S CATARRH POWDER 25c.
Is sent direct to the diseased parts by the Improved Blower. Heals the ulcer, cleans the air passages, stops drops in the throat and permanently cures Catarrh and Hay Fever. Also, a powerful blower, except no substitutes. All dealers or Dr. A. W. Chase & Co., Limited.