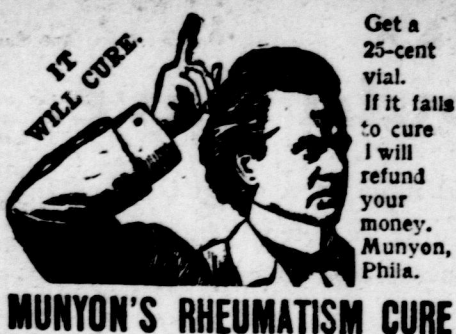


## RHEUMATISM



MUNYON'S RHEUMATISM CURE

Other quotations on page 6.

## MARKET PRICES

LOCAL MARKET.

London, Saturday, May 20.

The market today was one of the largest this spring. The larger portion of the offerings consisted of small stuff and garden truck. Considering the amount offered sales were fairly brisk. Prices were well maintained.

Grain—Oats were in good demand; there was fully 200 offered. Sales were made at \$1.22 to \$1.25 per cwt. for most of the loads. A couple of loads of wheat sold at \$1.05 per bushel.

Butter and Eggs—It was estimated in these columns a week or so ago that prices of butter would be lower; it was fulfilled today. Butter in crocks sold at 14c to 15c and rolls, 14c to 15c at wholesale. Eggs were firmer and in good demand at 13c and 13½ per dozen for crate and basket lots. The eastern markets are strong, which no doubt accounts for the firmness here, as quite a lot shipped from this city to eastern points.

Dressed Hogs—A few years ago it would be considered a novelty to see a dressed hog offered for sale during the summer months, as the packers only purchased their supply during the cold weather. Since then the appetite of the public seems to have changed, as the retail butchers who do not keep a supply of fresh pork all the year is considered out of date. While the demand is limited during the warm weather it seems to be on the increase. The scarcity of hogs at Tuesday's market and the high prices paid on that day led the market to believe that prices would go still higher. The result was that the supply today was larger than usual. Considering the large number offered price held up well at \$8.50 to \$9.25 per cwt; most of the sales were made at \$9 and \$9.25 per cwt.

Poultry—The supply was fairly large and the following prices were paid: Turkeys, dressed, per pound, 12c for gobblers, and 14c for hens; alive, 12c to 13c per pound. Chickens, dressed, sold at 9c to \$1.20 per pair; alive, 8c to \$1 per pair. A few pairs of spring chickens, about 2½ pounds in weight, sold at \$1 per pair.

Live Hogs—The following circular has been issued by some packers to the live-hog buyers, which reads as follows: "It has become a necessity to make a difference between small hogs and hogs of regular bacon weights; and for that reason we hereby beg to notify you that in the future we shall, without any further notice, make a reduction of 25c on all hogs weighing at the packing-house between 140 and 150 pounds, and a further reduction of 50c if they weigh less than 140 pounds. Any hog under 125 pounds, we simply will not take, or at least, we will reserve the right to make such reductions on them as we think right. They are no use whatever to us, and it is simply a shame to market them so early. We can assure you that if you will follow the above instructions, and be very careful in buying hogs, you will thereby further the best interests of the bacon and hog trade. And we sincerely hope you will assist us in this matter, which is of equal importance both to yourselves, the packers and farmers." The prices of live hogs for Monday's shipment will be \$6.30 and \$6.35 for selects. The buyers say that prices are sure to go lower. Quite a number of small pigs were offered; sales were fairly brisk, prices ruling at \$5 to \$6 per pair for pigs 4 to 8 weeks old; larger ones sold at \$8 to \$10 per pair.

Vegetables and Roots—Potatoes were in large supply. Sales were fairly brisk, considering the large quantity offered. Prices ranged from 6c to 8c per bag, according to size and quality of the tubers; most of the sales were made at 7c per bag. Rhubarb was a drug at 20c and 25c per dozen. Asparagus scarce at 50c per dozen. Green onions, 40c per dozen. Other vegetables plentiful at prices quoted.

Apples—Quite a number of bags and barrels offered. Prices were as quoted. Sales were fairly brisk.

Butchers' Meat—Sales were a trifle drab today. The following prices were most frequently paid: Beef, \$8 to \$7 for cow and \$8 to \$9 per cwt for heifer beef. Mutton, scarce at 8c to 10c per pound. Spring lambs were in good demand; not enough offered to supply the wants of the local butchers, at \$5 to \$6 each. Veal was plentiful, at \$5 to \$7.50 per cwt.

One lot of unwashed wool sold at 12½c per pound.

GRAIN, PER CENTAL.

Wheat, new, \$1.72 to \$1.74

Oats, new, 1.25 to 1.26

Corn, new, 1.15 to 1.16

Rye, new, 1.15 to 1.16

Buckwheat, 1.00 to 1.01

Peas, 1.00 to 1.01

GRAIN, PER BUSHEL.

Wheat, 41.75 to 42.00

Oats, new, 31.75 to 32.00

Corn, new, 24.00 to 24.25

Rye, new, 34.00 to 34.25

Buckwheat, 32.00 to 32.25

Peas, 30.00 to 30.25

DAIRY PRODUCE.

Butter, store lots, 14c to 15c

Butter, crocks, 14c to 15c

Butter, rolls, 14c to 15c

Butter, creamery, 21c to 22c

Eggs, doz., wholesale, 14c to 15c

Eggs, doz., retail, 15c to 16c

Honey, strained, 10c to 11c

Honey, comb, 12c to 13c

WOOL, HIDES, TALLOW.

Wool, washed, per lb., 19c to 20c

Wool, unwashed, per lb., 12c to 13c

Hides, No. 1, per lb., 3c to 4c

Hides, No. 2, per lb., 2c to 3c

Tallow, rendered, lb., 15c to 16c

Tallow, rough, lb., 12c to 13c

Sheepskins, each, 50c to 60c

VEGETABLES.

Turnips, per bag, 2c to 3c

Carrots, per bu., 20c to 25c

Onions, per bu., 20c to 25c

Beets, per bu., 20c to 25c

Parsnips, per bu., 20c to 25c

Cabbages, per doz., 10c to 15c

Cauliflowers, per doz., 10c to 15c

Celery, per doz., 10c to 15c

Sage, per doz., 10c to 15c

Savory, per doz., 10c to 15c

Green onions, per doz., 10c to 15c

Lettuce, per doz., 10c to 15c

Parsley, per doz., 10c to 15c

Rhubarb, per doz., 10c to 15c

LIVE STOCK.

Hogs, select, cwt., 9.00 to 9.25

Pigs, per pair, 4.50 to 5.00

Sows, per cwt., 2.50 to 3.00

Stags, per cwt., 1.50 to 2.00

Grass cattle, cwt., 4.50 to 5.00

Export cattle, cwt., 5.00 to 5.50

Rhubarb, per doz., 10c to 15c

LIVE STOCK.

Hogs, select, cwt., 9.00 to 9.25

Pigs, per pair, 4.50 to 5.00

Sows, per cwt., 2.50 to 3.00

Stags, per cwt., 1.50 to 2.00

Grass cattle, cwt., 4.50 to 5.00

Export cattle, cwt., 5.00 to 5.50

Rhubarb, per doz., 10c to 15c

LIVE STOCK.

Hogs, select, cwt., 9.00 to 9.25

Pigs, per pair, 4.50 to 5.00

Sows, per cwt., 2.50 to 3.00

Stags, per cwt., 1.50 to 2.00

Grass cattle, cwt., 4.50 to 5.00

Export cattle, cwt., 5.00 to 5.50

Rhubarb, per doz., 10c to 15c

LIVE STOCK.

Hogs, select, cwt., 9.00 to 9.25

Pigs, per pair, 4.50 to 5.00

Sows, per cwt., 2.50 to 3.00

Stags, per cwt., 1.50 to 2.00

Grass cattle, cwt., 4.50 to 5.00

Export cattle, cwt., 5.00 to 5.50

Rhubarb, per doz., 10c to 15c

LIVE STOCK.

Hogs, select, cwt., 9.00 to 9.25

Pigs, per pair, 4.50 to 5.00

Sows, per cwt., 2.50 to 3.00

Stags, per cwt., 1.50 to 2.00

Grass cattle, cwt., 4.50 to 5.00

Export cattle, cwt., 5.00 to 5.50

Rhubarb, per doz., 10c to 15c

LIVE STOCK.

Hogs, select, cwt., 9.00 to 9.25

Pigs, per pair, 4.50 to 5.00

Sows, per cwt., 2.50 to 3.00

Stags, per cwt., 1.50 to 2.00

Grass cattle, cwt., 4.50 to 5.00

Export cattle, cwt., 5.00 to 5.50

Rhubarb, per doz., 10c to 15c

LIVE STOCK.

Hogs, select, cwt., 9.00 to 9.25

Pigs, per pair, 4.50 to 5.00

Sows, per cwt., 2.50 to 3.00

Stags, per cwt., 1.50 to 2.00

Grass cattle, cwt., 4.50 to 5.00

Export cattle, cwt., 5.00 to 5.50

Rhubarb, per doz., 10c to 15c

LIVE STOCK.

Hogs, select, cwt., 9.00 to 9.25

Pigs, per pair, 4.50 to 5.00

Sows, per cwt., 2.50 to 3.00

Stags, per cwt., 1.50 to 2.00

Grass cattle, cwt., 4.50 to 5.00

Export cattle, cwt., 5.00 to 5.50

Rhubarb, per doz., 10c to 15c

LIVE STOCK.

Hogs, select, cwt., 9.00 to 9.25

Pigs, per pair, 4.50 to 5.00

Sows, per cwt., 2.50 to 3.00

Stags, per cwt., 1.50 to 2.00

Grass cattle, cwt., 4.50 to 5.00

Export cattle, cwt., 5.00 to 5.50

Rhubarb, per doz., 10c to 15c

LIVE STOCK.

Hogs, select, cwt., 9.00 to 9.25

Pigs, per pair, 4.50 to 5.00

Sows, per cwt., 2.50 to 3.00

Stags, per cwt., 1.50 to 2.00

Grass cattle, cwt., 4.50 to 5.00

Export cattle, cwt., 5.00 to 5.50

Rhubarb, per doz., 10c to 15c

LIVE STOCK.

Hogs, select, cwt., 9.00 to 9.25

Pigs, per pair, 4.50 to 5.00

Sows, per cwt., 2.50 to 3.00

Stags, per cwt., 1.50 to 2.00

Grass cattle, cwt., 4.50 to 5.00

Export cattle, cwt., 5.00 to 5.50

Rhubarb, per doz., 10c to 15c

LIVE STOCK.

Hogs, select, cwt., 9.00 to 9.25

Pigs, per pair, 4.50 to 5.00

Sows, per cwt., 2.50 to 3.00

Stags, per cwt., 1.50 to 2.00

Grass cattle, cwt., 4.50 to 5.00

Export cattle, cwt., 5.00 to 5.50

Rhubarb, per doz., 10c to 15c

LIVE STOCK.

Hogs, select, cwt., 9.00 to 9.25

Pigs, per pair, 4.50 to 5.00

Sows, per cwt., 2.50 to 3.00

Stags, per cwt., 1.50 to 2.00

Grass cattle, cwt., 4.50 to 5.00

Export cattle, cwt., 5.00 to 5.50

Rhubarb, per doz., 10c to 15c

LIVE STOCK.

Hogs, select, cwt., 9.00 to 9.25

Pigs, per pair, 4.50 to 5.00

Sows, per cwt., 2.50 to 3.00

Stags, per cwt., 1.50 to 2.00

Grass cattle, cwt., 4.50 to 5.00

Export cattle, cwt., 5.00 to 5.50

Rhubarb, per doz., 10c to 15c

LIVE STOCK.

Hogs, select, cwt., 9.00 to 9.25

Pigs, per pair, 4.50 to 5.00

Sows, per cwt., 2.50 to 3.00

Stags, per cwt., 1.50 to 2.00

Grass cattle, cwt., 4.50 to 5.00

Export cattle, cwt., 5.00 to 5.50

Rhubarb, per doz., 10c to 15c

LIVE STOCK.

Hogs, select, cwt., 9.00 to 9.25

Pigs, per pair, 4.50 to 5.00

Sows, per cwt., 2.50 to 3.00

Stags, per cwt., 1.50 to 2.00

Grass cattle, cwt., 4.50 to 5.00

Export cattle, cwt., 5.00 to 5.50

Rhubarb, per doz., 10c to 15c

LIVE STOCK.

Hogs, select, cwt., 9.00 to 9.25

Pigs, per pair, 4.50 to 5.00

Sows, per cwt., 2.50 to 3.00

Stags, per cwt., 1.50 to 2.00

Grass cattle, cwt., 4.50 to 5.00

Export cattle, cwt., 5.00 to 5.50

Rhubarb, per doz., 10c to 15c

LIVE STOCK.

Hogs, select, cwt., 9.00 to 9.25

Pigs, per pair, 4.50 to 5.00

Sows, per cwt., 2.50 to 3.00

Stags, per cwt., 1.50 to 2.00

Grass cattle, cwt., 4.50 to 5.00

Export cattle, cwt., 5.00 to 5.50

Rhubarb, per doz., 10c to 15c

LIVE STOCK.

Hogs, select, cwt., 9.00 to 9.25

Pigs, per pair, 4.50 to 5.00

Sows, per cwt., 2.50 to 3.00

Stags, per cwt., 1.50 to 2.00

Grass cattle, cwt., 4.50 to 5.00

Export cattle, cwt., 5.00 to 5.50

Rhubarb, per doz., 10c to 15c

LIVE STOCK.

Hogs, select, cwt., 9.00 to 9.25

Pigs, per pair, 4.50 to 5.00

Sows, per cwt., 2.50 to 3.00

Stags, per cwt., 1.50 to 2.00

Grass cattle, cwt., 4.50 to 5.00

Export cattle, cwt., 5.00 to 5.50

Rhubarb, per doz., 10c to 15c

LIVE STOCK.

Hogs, select, cwt., 9.00 to 9.25

Pigs, per pair, 4.50 to 5.00

Sows, per cwt., 2.50 to 3.00

Stags, per cwt., 1.50 to 2.00

Grass cattle, cwt., 4.50 to 5.00

Export cattle, cwt., 5.00 to 5.50

Rhubarb, per doz., 10c to 15c

LIVE STOCK.

Hogs, select, cwt., 9.00 to 9.25

Pigs, per pair, 4.50 to 5.00

Sows, per cwt., 2.50 to 3.00

Stags, per cwt., 1.50 to 2.00

Grass cattle, cwt., 4.50 to 5.00

Export cattle, cwt., 5.00 to 5.50

Rhubarb, per doz., 10c to 15c

LIVE STOCK.

Hogs, select, cwt., 9.00 to 9.25

Pigs, per pair, 4.50 to 5.00

Sows, per cwt., 2.50 to 3.00

Stags, per cwt., 1.50 to 2.00

Grass cattle, cwt., 4.50 to 5.00

Export cattle, cwt., 5.00 to 5.50

Rhubarb, per doz., 10c to 15c

LIVE STOCK.