

Issued Each Week—Only One Dollar a Year

VOL. XXX.

NUMBER 14

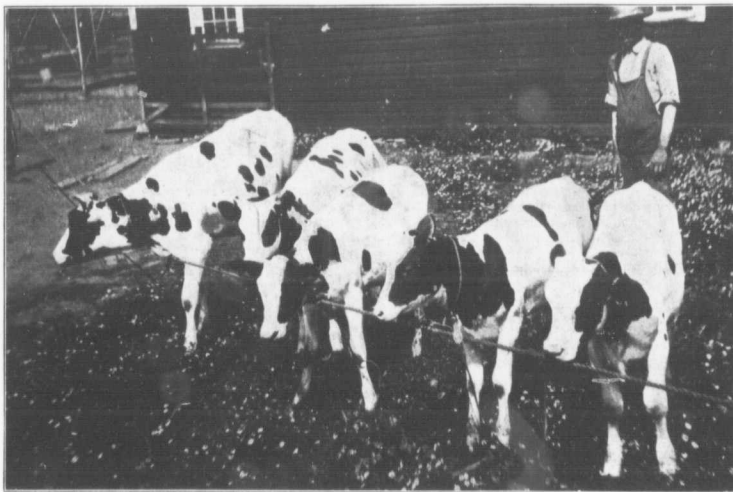
FARM AND DAIRY

RURAL HOME

PETERBORO, ONT.

APRIL 6,

1911.



REMEMBER THAT THE CALVES OF TO-DAY MAKE THE COWS OF TO-MORROW

Heifer calves of dairy breeding, backed by sires and dams of known heavy milk production, soon develop into the heavy yielding cows so much in demand and at such fancy prices as now prevail. If calves are bred right and afterwards fed right, they may be counted on to out-distance even their 6,000-lbs.-of-milk dams by 2,000 lbs. of milk per year. This is worth working for and it is the reason why you should have a good pure bred dairy sire to use on your herd. Our illustration shows some imported calves brought in from the States last spring by W. B. Allison, Dundas Co., Ont.

DEVOTED TO
BETTER FARMING AND
CANADIAN COUNTRY LIFE

THIRD ANNUAL
Special Dairy
NUMBER
PRICE 10 CENTS