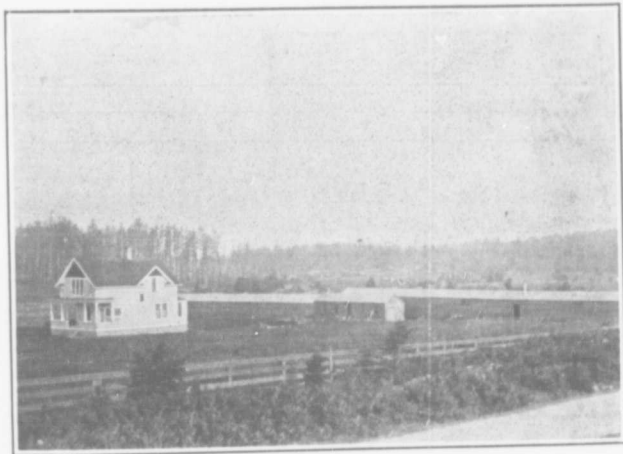


FARMING ALL THE YEAR ROUND

TO the seeker of broad and fertile plains, we can offer small encouragement, for our lands are mainly stump and tree clad and requires time and money to convert them into very extensive green-clad fields: therefore the man we are looking to interest in this branch of development is the Eastern farmer with from \$800 to \$3000 who is looking for an opening

for diversified farming in a good climate and in a country where he can build a permanent home and feel sure of a comfortable living and the prospects of bettering his condition as years go by. The cost of land in the vicinity of Nanaimo is reasonable; from \$60 to \$100 per acre for rough land from \$100 to \$300 acre for cultivated land



A FIVE ACRE CHICKEN RANCH NEAR NANAIMO



THE SOIL THAT GROWS THE BIG TREES WILL ALSO GROW THE BIG SPUDS

