



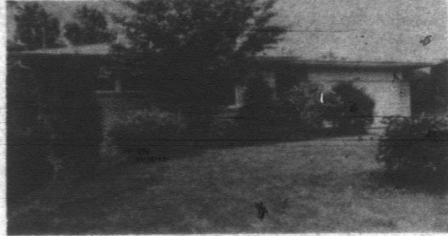
residential property mart

A SELECTION OF RESIDENTIAL PROPERTY IN MISSISSAUGA



SOMETHING DIFFERENT

\$79,500. — For this modern 4 bedroom home in a quiet area, 15 miles west of Toronto. Ultra modern large kitchen with plenty of cupboards, separate dining room, sliding doors to patio in living room, family room with good fireplace, also sliding doors to patio; den, semi-finished games room, 3 bathrooms, many extras included. Good wide lot, 7½ per cent mortgage. Call Ernie Heighway, 278-5273; evgs. 277-4232.



TWO LEVEL BUNGALOW

\$63,900. Will consider modest down payment with mortgage back to vendor to responsible purchaser. 4 bedrooms, huge sunny kitchen, large family room with fireplace. Custom quality throughout with many extras including air conditioning. Immediate possession! To inspect this delightful home call Don McMillan, 278-5273; evgs. 822-0828.



PORT CREDIT AREA

4 BEDROOMS

\$58,500. — Gorgeous lot with private rear yard and the home is in just beautiful condition with built-ins and top grade broadloom. There are three bathrooms and a family room at grade. Big 7½ per cent mortgage that can run until 1992. Call Art-Jex at 278-5273; evgs. 277-4214. You won't be disappointed.

5 BEDROOMS—GOLF COURSE

\$71,900. — Magnificent suburban home offering the ultimate in comfortable quiet living with easy access to schools and huge recreational complex. The home features 2 storey design with large foyer and curved staircase. 5 very large bedrooms, separate living and dining room, huge family kitchen overlooking garden and golf green, main floor family room and laundry, 3 baths, 3 fireplaces. See this now by calling John Cowieson at 278-5273 or after 5 at 277-9364.

BEAUTIFUL ERINDALE

\$59,900. — For this lovely large 3 bedroom home plus den in Erindale Woodlands. Extra large separate dining room, bright living room with fireplace, plenty of cupboards in this good size kitchen, 30 x 13 ft. recreation room with fireplace, 3 bath rooms, 2-car garage. Close to schools, treed lot. Call Ernie Heighway, 278-5273; evgs. 277-4232.

TWO STOREY—EXCELLENT VALUE

\$49,900. This is a large four bedroom home just three years old and has been well cared for. Main floor family room with fireplace and sliding doors to cedar sundeck and private back yard. There are three bathrooms and a two-car garage. Call Art Jex, 278-5273; evgs. 277-4214.

CLIFF RD. NORTH OF Q.E.

\$48,900. — New two storey four bedroom with a family room. Absolutely the most in family living. See this one today! Call Traven Matchett, 278-5273; evgs. 270-3549.

EXPANSION ANNOUNCEMENT

As you may be aware from reports in the news media, A.E. LePage Limited has again taken appropriate action to strengthen its position in the real estate market in Canada. We have formally announced that A.E. LePage Boulbee Sweet Ltd. and Bell-Irving Realty Limited will merge on October 1, 1972.

This merger will create an autonomous British Columbia Company employing about 250 sales representatives and staff, operating a network of nine offices, and handling about \$100 million in sales volume annually.

H.P. "Budge" Bell-Irving will be President of the new Company for which a name has not been decided upon. Shares in the Company will be held by A.E. LePage Limited and employees in British Columbia. Mr. Bell-Irving will become a Director of A.E. LePage Limited. He is President of the 27,000 member Canadian Real Estate Association.

A.E. LePage Limited and its affiliated companies now employ over 750 sales personnel and staff in 39 major operating divisions and offices from coast to coast and handling an annual sales volume of over \$300 million.



if you are thinking of moving almost anywhere we can save you TIME, MONEY, ANXIETY

- | | | | | |
|---|---|---|---|--|
| <p>BRITISH COLUMBIA</p> <ul style="list-style-type: none"> BURNS LAKE CASTLEGAR — COURTENAY — CRANBROOK — DAWSON CREEK — DUNCAN — FORT FRASER — FORT ST. JOHN — FRASER LAKE — GRAND FORKS — HOUSTON — KAMLOOPS — KELOWNA — KEREMEOS — KINNAIRD — KITIMAT — LILLOOET — NANAIMO — NELSON — OLIVER — OSOYOOS — PEACE RIVER — PENTICTON — PORT ALBERNI — POWELL RIVER — PRINCE GEORGE — PRINCE RUPERT — PRINCEGEON — QUESNEL — REVELSTOKE — SALMON ARM — SMITHERS — SUMMERLAND — SURREY — TERRACE — VERNON | <p>VANCOUVER — VICTORIA — WILLIAMS LAKE — WINDERMERE.</p> <p>ALBERTA</p> <ul style="list-style-type: none"> CALGARY — CAMROSE — EDMONTON — LETHBRIDGE — MEDICINE HAT — PEACE RIVER — RED DEER. <p>SASKATCHEWAN</p> <ul style="list-style-type: none"> NORTH BATTLEFORD — REGINA — SASKATOON — SWIFT CURRENT — WEYBURN — YORKTON — ESTEVAN — MOOSE JAW — STEINBACH — WINNIPEG — PORTAGE LA PRAIRIE. <p>ONTARIO</p> <ul style="list-style-type: none"> ACTON — BANCROFT — BARRIE — BEAVERTON — BELLEVILLE — BOWMANVILLE — BRACEBRIDGE — | <p>BRANTFORD</p> <ul style="list-style-type: none"> BRIGHTON — BROCKVILLE — BURLINGTON — CAMELLFORD — CLINTON — COBOURG — CONCORD — DURHAM — ELMIRA — CORNWALL — FERGUS — GALT — GANANOQUE — GUELPH — HAMILTON — HANOVER — HESPELER — HOCKLEY VALLEY — HONEY HARBOUR — HUNTSVILLE — KINGSTON — KITCHENER — LAKEFIELD — LINDSAY — LISTOWEL — LONDON — MATTAWA — MINDEN — MEAFORD — MIDLAND — MOUNT FOREST — NIAGARA FALLS — NIAGARA ON THE LAKE — NORTH BAY — OAKVILLE — ORANGEVILLE — ORILLIA — OSHAWA — OTTAWA — OWEN SOUND — PEMBROKE — | <p>PETERBOROUGH — PETROLIA — PICTON — PORT CARLING — PORT CREDIT — PORT ELGIN — PORT HOPE — PORT PERRY — PRESCOTT — PORT SYDNEY — PRESTON — SARNIA — SAULT STE. MARIE — SCARBOROUGH — SMITHS FALLS — ST. CATHARINES — STROUD — SUDBURY — THOROLD — ST. THOMAS — PERTH — TRENTON — TWEED — THORNBURY — THUNDER BAY — TORONTO — UTTERSON — VIRGIL — WALKERTON — WATERLOO — WATERFORD — WELLAND — WINGHAM — WOODSTOCK</p> <p>QUEBEC</p> <ul style="list-style-type: none"> CHATEAUGUAY — CANDIAC — HULL — MAGOG — MONTREAL — | <p>SHERBROOKE — VAL D'OR.</p> <p>NEW BRUNSWICK</p> <ul style="list-style-type: none"> FREDERICTON — MONCTON. <p>NOVA SCOTIA</p> <ul style="list-style-type: none"> BRIDGEWATER — DARTMOUTH — HALIFAX — DIGBY — SHELburne — SYDNEY — TRURO — YARMOUTH. <p>NEWFOUNDLAND</p> <ul style="list-style-type: none"> ST. JOHN'S. <p>PRINCE EDWARD ISLAND</p> <ul style="list-style-type: none"> CHARLOTTETOWN. |
|---|---|---|---|--|

✓ CHECK OUR TRANSFER PURCHASE PLAN GUARANTEED SALES PLAN INTERIM FINANCE PLAN

**Real Estate Coast to Coast
91A LAKESHORE RD E -PORT CREDIT - 278-5273**