

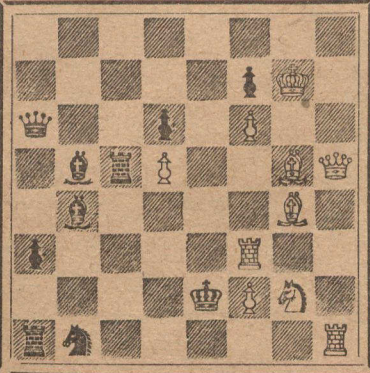
## CHESS

Conducted by MALCOLM SIM

Address all correspondence to the Chess Editor, Canadian Courier, 30 Grant St., Toronto.

PROBLEM No. 99, by A. M. Sparks.  
First Prize (ex-æquo), Rice Memorial Tourney.

Black.—Ten Pieces.



White.—Ten Pieces.

Problem No. 100, by E. Paloska.  
White to play and mate in two.  
First Prize (ex-æquo), Rice Memorial Tourney.

White: K at KRsq; Q at QKt5; B at KB5; Kts at QB6 and KR3; Ps at K2, KB4, Kkt7 and KR6.  
Black: K at Kkt5; Rs at Ksq and K5; Kt at QR7; P at QKt3.

White mates in three.

Five problems were graded together in each of the two and three move sections in the Rice Memorial Tourney! The above two, whilst interesting, hold nothing on the point of difficulty.

## SOLUTIONS.

Problem No. 96, by H. W. Bettmann.

1. R—B7, K—K6; 2. R—K7ch, K—Q7; 3. R—K2 mate.
1. ...., K—K4; 2. R—Ksqch, K—Q3; 3. R—K6 mate.
1. ...., BxP; 2. R—K7ch, K—B4; 3. Kt—R3 mate.
1. ...., P—Kt7; 2. R—Ksqch, K—B6; 3. KtxB mate.

Problem No. 97, by A. J. Fink.

1. K—B8, B—Q3ch; 2. P—K7 mate.
1. ...., P—Q3; 2. Q—R4 mate.
1. ...., QP else; 2. mate accordingly.
1. ...., threat; 2. Pxp mate.

## CHESS IN GERMANY.

An interesting game played in the seventh tournament among the interned Russian chess players at Triberg. The notes by Mr. Rabinovitch we have abridged from the British Chess Magazine.

## Queen's Pawn (Irregular.)

- |                           |                              |
|---------------------------|------------------------------|
| White.<br>E. Rabinovitch. | Black.<br>E. D. Bogoljuboff. |
| 1. P—Q4                   | 1. Kt—KB3                    |
| 2. P—QB4                  | 2. P—K3                      |
| 3. Kt—QB3                 | 3. B—Kt5                     |
| 4. P—K3                   | 4. Castles                   |
| 5. B—Q3                   | 5. Kt—B3 (a)                 |
| 6. Kkt—K2                 | 6. P—K4                      |
| 7. Castles                | 7. BxKt                      |
| 8. PxB                    | 8. P—Q3                      |
| 9. P—K4                   | 9. R—Ksq                     |
| 10. P—B3                  | 10. P—QKt3 (b)               |
| 11. B—Kt5                 | 11. P—KR3                    |
| 12. B—R4                  | 12. P—Kkt4 (c)               |
| 13. B—KB2                 | 13. Kt—K2                    |
| 14. P—KR4                 | 14. Kt—Kt3                   |
| 15. RpxP                  | 15. RpxP                     |
| 16. B—K3                  | 16. Kt—R4                    |
| 17. K—B2                  | 17. K—Kt2                    |
| 18. R—Rsq                 | 18. R—Rsq                    |
| 19. Q—Q2                  | 19. Kt (R4)—B5               |
| 20. BxKt!                 | 20. KtPxP                    |
| 21. P—Kt3!                | 21. B—R6 (d)                 |
| 22. QR—Kkt5 (e)           | 22. Q—B3 (f)                 |
| 23. KtPxP                 | 23. R—R5                     |
| 24. P—KB5                 | 24. QR—Rsq                   |
| 25. R—Kt3 (g)             | 25. B—Kt5                    |
| 26. RxR                   | 26. QxR (h)                  |
| 27. PxKt! (i)             | 27. BpxP (j)                 |
| 28. Kt—Ktsq (k)           | 28. R—KBsq                   |
| 29. B—Bsq                 | 29. R—B5                     |
| 30. B—R3                  | 30. B—R4                     |
| 31. B—Kt2                 | 31. R—B2 (l)                 |
| 32. Q—Kt5 (m)             | 32. QxP                      |
| 33. QxB                   | 33. Pxp                      |
| 34. QxPch (n)             | 34. QxP                      |
| 35. RxQch                 | 35. KxR                      |
| 36. Pxp                   | 36. P—Q4 (o)                 |
| 37. Pxp                   | 37. P—Kt4 (p)                |
| 38. Kt—K2? (q)            | 38. R—B3!                    |
| 39. P—B4                  | 39. R—R3                     |
| 40. B—K4ch                | 40. K—B3                     |
| 41. Kt—Bsq                | 41. R—R6                     |
| 42. K—K2                  | 42. R—R6                     |
| 43. K—Q2                  | 43. P—R4                     |
| 44. B—Q3                  | 44. P—Kt5                    |
| 45. K—B2                  | 45. K—K2 (r)                 |
| 46. K—Kt3                 | 46. K—Q3                     |
| 47. K—B4                  | 47. R—R8                     |
| 48. Kt—Kt3                | 48. P—R5                     |
| 49. Kt—B5                 | 49. P—Kt6                    |
| 50. Kt—K4ch               | 50. K—K2                     |
| 51. Pxp                   | 51. P—R6                     |
| 52. Kt—B3                 | 52. R—QB8 (s)                |
| 53. K—Kt4! (t)            | 53. R—QR8                    |
| 54. B—B4                  | 54. K—B3                     |
| 55. Kt—Kt5                | 55. P—R7                     |
| 56. K—R3                  | 56. K—B4                     |
| 57. K—Kt2                 | 57. R—R8                     |
| 58. KxP                   | Resigns.                     |

(a) This move blocks the Queen's

Bishop Pawn and consequently cramps Black's game.

(b) 10 ...., P—KR3 was necessary.

(c) Afraid of White's P—B4.

(d) Black has no move to give him freedom.

(e) Not, of course, 22. KtPxP, because of Q—R5ch.

(f) Black loses a Pawn, following this move, and must give up a piece, too, in order to get an attack. After 22. ...., K—Bsq, however, his position would be bad.

(g) Stronger than 25. PxKt, B—Kt5.

(h) If 26. ...., RxR, then follows 27. K—Kt2! BxPch (the only move); 28. KxB! (threatening Q—Kt5), R—R4; 29. Kt—B4! PxKt; 30. QxP, R—R5; 31. Q—Kt5, QxQ; 32. RxQ, R—R6ch (if K—B3 or R3, then 33. PxKt, KxR; 34. P—Kt7, etc.); 33. K—K2, R—R7ch; 34. K—K3, R—R6ch; 35. K—Q2, R—R7ch; 36. B—K2, etc.

(i) If 27. PxB, then 27. ...., Q—R7ch; 28. R—Kt2, Q—R5ch; 29. Kt—Kt3, Kt—B5.

(j) If 27. ...., Q—R8 then 28. Q—Kt5! R—R7ch; 29. K—K3, RxKtch; 30. KxR, Q—R7ch; 31. K—Qsq, QxR; 32. Pxp dis. ch, KxP; 33. QxB, etc.

(k) We see no objection to 28. PxB. (Ed. C.)

(l) If 31. ...., B—Kt5, then 32. Kt—R3.

(m) There was a quicker win by 32.

Q—K3, followed by Kt—K2 and K—Ktsq.

(n) The simplest way.

(o) His best chance. If 36. ...., R—B4, then 37. P—Q5, R—B5; 38. B—Bsq, R—Q5; 39. K—K3, R—Q8; 40. B—Q3ch, K—B3; 41. Kt—K2, and White wins easily.

(p) Not 37. ...., R—B4, because of 38. Kt—K2 with P—B4 to follow.

(q) Considerably stronger was 38. B—Bsq, forcing P—R3 or P—Kt5, and so keeping Black's Rook from QR3.

(r) If 45. ...., P—R5; then 46. B—Kt5, R—B6ch; 47. K—Ktsq, P—R6; 48. Kt—Q3! P—Kt6; 49. Kt—B5, Pxpch; 50. KxP, K—B4; 51. Kt—K6, etc., and wins.

(s) If 52. ...., R—R8, then 53. K—Kt4 (not 53. B—Ktsq, RxB!), P—R7; 54. B—B4, followed by K—R3.

(t) The only move to win.

## Items.

Mr. A. H. Stovell, the Parliament Club crack, has been presented with a handsome, luminous wrist watch by the club members on the strength of his entrance into the 204th Battalion. He is in the signal corps.

Mr. W. H. Ferguson's energy on behalf of the City Championship Tournament, has resulted in the prodigious total of 73 entries!

The correspondence match of two games between Toronto and Hamilton,

ended in a victory for Hamilton by one win and a draw. That between Toronto and Sault Ste. Marie, fell to Toronto, by a similar result.

## TORONTO CHESS LEAGUE.

The following further results have occurred:

## Division "A".

Nov. 29—Beach 3½, Central Y.M.C.A. 1½.

## Division "B".

Nov. 29—Beach 4, West End Y.M.C.A. 1.

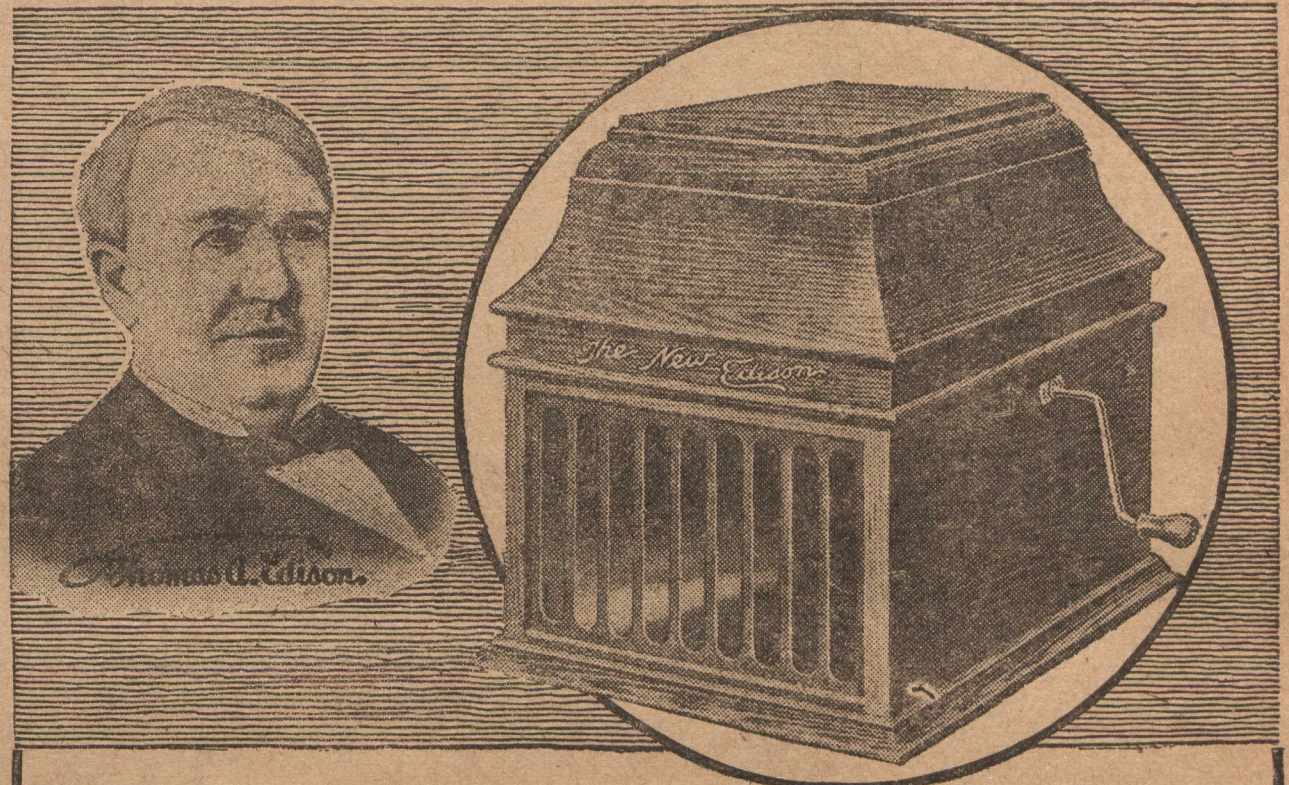
## Division "A" Standing.

	Played	Won	Lost	Points
Beaches	3	3	0	3
Parliament	2	2	0	2
Toronto	2	1	1	1
W. End Y.M.C.A.	3	1	2	1
Varsity	3	1	2	1
Gen. Y.M.C.A.	3	0	3	0

Behind the Times.—"I hear that all of the clever writers are deserting the magazines to write for the movies."

"You were misinformed; the clever writers haven't been in the magazines for some time now."—Puck.

## Thomas A. Edison's Wonderful New Phonograph



# Only \$100

## —and After Trial!

Yes, we will send you the New Edison, the product of the world's greatest inventor's genius, the phonograph with the wonderful diamond stylus reproducer and your choice of the latest Diamond Amberol Records on free trial without a penny down. On this offer, you can now have the genuine Edison, the instrument which gives you real, life-like music, the finest and best of all phonographs at a small fraction of the price asked for imitations of Mr. Edison's great instrument. Seize this opportunity. Send the coupon now for free catalog.

### Rock-Bottom Offer Direct!

If, after the free trial, you decide to keep Mr. Edison's superb new instrument, send us only \$1.00. Pay the balance on the easiest kind of monthly payments.

Think of it—a \$1.00 payment, and a few dollars a month to get this wonderful new style outfit—Mr. Edison's great phonograph with the Diamond Stylus reproducer, all the musical results of the highest price outfits—the same Diamond Amberol Records—yes, the greatest value for \$1.00 down, balance on easiest monthly terms. Convince yourself—free trial first! No money down, no C.O.D., not one cent to pay unless you choose to keep the instrument. Send coupon now.

## New Edison Catalog FREE

Your name and address on a postal or a letter (or just the coupon) is enough. No obligation in asking for the catalog. Find out about Mr. Edison's great new phonograph. Get the details of this offer—while this offer lasts. Write now.

**F. K. BABSON, Edison Phonograph Distributors**

355 Portage Ave., Dept. 268, Winnipeg, Man.

U. S. Office: Edison Block, Chicago, Illinois

## Edison's Favorite Invention

For years, the world's greatest inventor worked night and day to make the music of the phonograph true to life. At last he has been crowned with success. Just as he was the first to invent the phonograph, so is he the only one who has made phonograph music life-like. Don't miss our offer.

Get the New Edison in your home on free trial.

Entertain your family and friends

with the latest song hits, with your favorite, old-time melodies—with everything from grand opera to comic vaudeville. Roar with laughter at the side-splitting minstrel shows. Then, after the trial, send it back if you choose.

**To F. K. BABSON**  
Dept. 268  
355 Portage Ave., Winnipeg, Man.

Gentlemen: Please send me your New Edison Catalog and full particulars of your free trial offer on the new model Edison Phonograph.

Name.....

Address.....