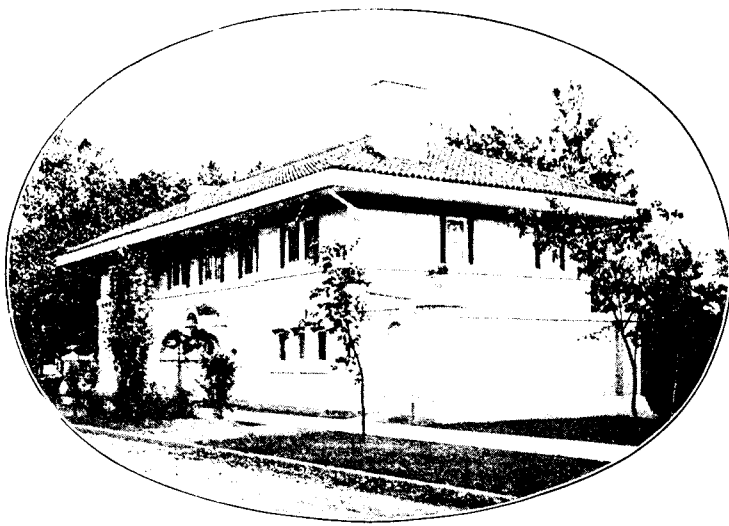




**A New System
of
Fire-proof Stucco
Construction
with the
IDEAL
Face-Down Interchangeable
Concrete Block
Machine**

See Our Exhibit, Coliseum, Chicago, Feb. 18-24, 1909
St. Lawrence Arena, Toronto, March 1-6, 1909



ONE of the great advantages of the IDEAL Concrete Machine is its adaptability to stucco construction, now so popular and so rapidly growing in popularity.

Stucco construction of the "IDEAL" type is practically perfect. The stucco is applied over special IDEAL Concrete Blocks as shown in the upper illustration. These blocks provide a perfect base for stucco without expense of metal or other lathing. By the "IDEAL" system the structure is fire-proof, time-proof and offers greatest resistance to cold. It is in every respect superior to the usual flimsy wooden building covered with a shell of stucco. The lower illustration shows the finished beauty of "IDEAL" stucco construction, its cost comparing favorably with any other method.

Other advantages of the IDEAL machine are its adaptability, rapidity, simplicity and little cost of operation. On one machine may be produced practically any shape or design of block required. It is the only machine legally built on the "face-down" principle, permitting rich facing material with coarser material for back of block.

We have a complete line of concrete machinery, including Mixers, Brick Machines, Sill and Lintel Machines, Sidewalk, Step and Sill Molds. Illustrated catalogue free.

Ideal Concrete Machinery Co., Ltd.
221 King Street, London, Ont.

Canadian Sales Agents, **Mussens Limited**,
Montreal, Toronto, Winnipeg, Vancouver.