

**Black Watch**

**Black Plug**  
**The Chewing Tobacco**  
**of Quality.**



2271

**HANDLED BY ALL THE**  
**WHOLESALE TRADE**

**EAST AND WEST.**

**News and Notes of Progress Through-**  
**out the Dominion.**

**Regina, Sask.**—The Canadian Pacific Railway have filed plans for the revised location of the Regina, Saskatoon and North Saskatchewan branch from Regina for a distance of about twenty-five miles.

**Halifax, N.S.**—The Provincial Exhibition here is a decided success, the attendance almost every day being bigger than on the corresponding day in 1907. The steamship Boston arrived at Halifax this week with 3,000 bunches of bananas and 5,000 bags of cocoanuts and sugar from the West Indies.

**Sydney, N.S.**—The total output of the Dominion Coal Company this year is expected to be the largest in the history of the company. Nearly 10,000 employees are on the company's pay roll.

**Howe Sound, B.C.**—Two scow loads of ore were received last week by the Tye smelter from the Britannia Copper Mines, Howe Sound, B.C.

**Vancouver.**—The largest consignment of pine apples ever received at a British

Columbia port came to Vancouver from Honolulu last week.

**Portage la Prairie, Man.**—A Government engineer has been sent to supervise the straightening by new channels the abrupt bends in the Assiniboine River between Portage la Prairie and Winnipeg. This in order to prevent the river overflowing and flooding the farm lands, which misfortune has occurred more than once and harmed the reputation of the district.

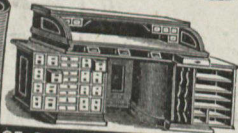
**Headingley, Man.**—A new elevator with a capacity of 30,000 bushels is in course of construction here. The elevator is being constructed for and will be operated by the Western Canada Flour Mills, Limited.

According to the Labor Gazette, the loss of time to employees through trade disputes in Canada during July was ap-

## CANADIAN OFFICE & SCHOOL FURNITURE CO. LIMITED



**OFFICE, SCHOOL, CHURCH, & LODGE FURNITURE**



**FINE BANK, OFFICE, COURT HOUSE AND DRUG STORE FITTINGS**

**SEND FOR CATALOGUE**

## ATLAS ASSURANCE CO., Limited

**OF LONDON, ENGLAND**

**Subscribed Capital - \$11,000,000**

Total Security for Policyholders amounts to Twenty-four Million Dollars. Claims paid exceed One Hundred and Thirty Million Dollars.

The Company's guiding principles have ever been Caution and Liberality. Conservative selection of the risks accepted and Liberal treatment when they burn.

**AGENTS**—i.e., Real Agents who Work—wanted in unrepresented districts

**North-West Department:**

**R. W. DOUGLAS**, Local Manager, 316-317 Nanton Bldg., Cor. Main and Portage Ave., Winnipeg.

**Toronto Department:**

**SMITH & MACKENZIE**, General Agents, 24 Toronto Street, Toronto.

**Head Office for Canada—MONTREAL**

**MATTHEW C. HINSHAW**, Branch Manager.

proximately 21,000 working days, compared with a loss of 82,525 days in June this year and 81,100 in July, 1907.

The King has approved of the following Argentine vice-consuls: T. J. Carbray, Quebec; Leon Famelart, Montreal; J. A. Gordon, Montreal West; J. A. Neville, Halifax, and H. H. McLean, St. John West.

### CONTRIBUTION FROM "THE SEARCHER."

We cannot print your article. You do not sign your name. We cannot deal with anonymous communications. There are two sides to your contention that "Canada is for Canadians and not for immigrants."

## THE EXCELSIOR LIFE INSURANCE CO.

**Head Office: 59-61 Victoria St., Toronto**

**Established 1889**

Insurance in force - \$11,322,477.70  
 Assets - 1,411,330.38

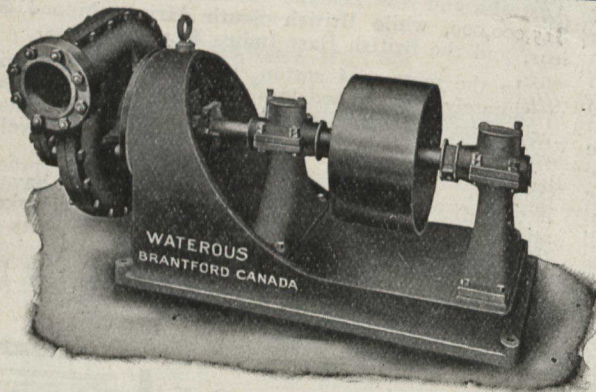
A Company possessing features particularly attractive to insurers and agents.  
 No better Company to insure in No better Company to represent

**E. MARSHALL**  
 Gen'l Manager

**D. FASKEN**  
 President

## The PUMP For PAPER and PULP MILLS

We Manufacture a full line of  
**PULP MILL MACHINERY**



**WRITE FOR SPECIAL CATALOGS**

**The Waterous Engine Works Co., Ltd.**  
**BRANTFORD, CANADA**

## The Home Bank of Canada

**Head Office TORONTO** 8 King St. West

**Branches in Toronto**

78 Church Street  
 Corner Queen West and Bathurst  
 Corner Bloor West and Bathurst  
 Corner Queen East and Ontario  
 20 Dundas Street West  
 West Toronto

**Branch Offices in Ontario**

London St. Thomas  
 Walkerville Cannington  
 Alliston Sandwich  
 Ilderton Thorndale  
 Melbourne Belle River  
 Tecumseh Everett

Winnipeg, Man. Lawrence Station  
 Fernie, B.C.  
**JAMES MASON**, General Manager