

For Nothing You may Have this Spramotor—

If you can find a spraying outfit of another make that represents the same dollar-for-dollar value.

THAT'S a strong statement to print but we are prepared to make good—
Because we know what the “next best machines” on the market are like—
Know definitely that your own fair judgment will pronounce this Spramotor to be **the best spraying apparatus** ever offered the public at the price.

There isn't an extra bolt or nut about

The Model “C” Spramotor

yet, it has every **practical** feature making for

- economy in operation**
- maximum efficiency**
- and durability**

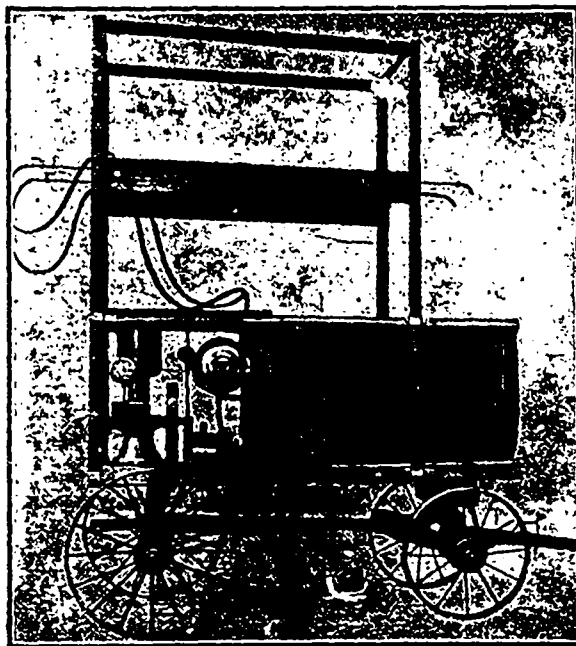
But, don't take our word for it—

Examine other machines called “just as good” sold at about the same price.

Take the specifications here shown, study them carefully—

Then—**apply** them to the “just as good” machines.

Finally the **outstanding** characteristics—the **exclusive patented features** of the **Model C Spramotor** will **compel** you to pronounce judgment in its favor—For the simple reason that **the sum** of these essentials **cannot** be found in any other sprayer.



Specifications of the Model “C” Spramotor :

Bed—4 inch Laminated Maple and Pine, securely bolted together and to the tank, making a perfectly rigid unit, slides cut away for short turning.

Tank—11 clear Cypress, curved and doweled staves, ends and top tongue and grooved, preventing dust.

Caboose—Entirely covering Engine and Pumper; with oak frame, metal cased doors.

Derrick—Of best straight-grain, clear wood, tongue and grooved floor. In six pieces. Large enough for two men to operate. Can be removed in one minute.

Engine—2 1/2 H.P., 500 R.P.M. Upright Hopper Cooled; simple and effective. Controls gas supply and spark.

Motor—All Brass, Individual Ball Valves, with Patent Cages. Automatic Compensating Plunger. Entire Pump and Connections of Brass. Renewable Plunger Tube.

Suction Control—3-Way Brass Cock at Tank Outlet, with index lever to charge air tank with compressed air, to drain out tank or shut off supply to motor at will.

Pressure Regulator—Automatic; regulating pressure by stopping pump, engine runs idle. Only pumps up required pressure; no loss through leaky safety valve. Steady pressure, from 175 to 200 or over, as desired. Runs in oil; no attention required.

Clutch Control—Operator can lock out clutch, and start engine without load.

Agitator—Rotary from Engine, operates when motor is idle. Detachable through brass plug in front end of tank. Keeps suction screen swept clean.

Pressure Tank—12 gals. capacity. Of galvanized steel. When filled with compressed air forms a complete cushion for motor, and prolongs life of machine.

By-Pass and Emergency Valve—In top of tank, locked to desired pressure; preventing, in case of accident, excessive pressure developing. Operates only at 50 lbs. greater pressure than Automatic regulator.

Hopper Screen—Holding two pails, with brass screen and wooden frame, fitting into opening in tank.

Tank Filler—Operated by Spramotor, will fill tank with water in ten minutes, transfer mixtures and lift water 30 ft.

N.B.—There's a Spramotor specifically built to suit your spraying needs whatever they may be. Write for Catalogue.

SPRAMOTOR LIMITED
LONDON - - - ONTARIO