

**Supplies.**

Recommended by C. H. E.  
 Bros. Series of Readers;  
 Geometry, Euclid, Hygiene,  
 or Matriculation Study in  
 Nibs, Crayons; anything  
 school order with us and

lovely statues, but the slow, laborious  
 destruction of hundreds upon hun-  
 dreds of books implies a condition of  
 moral degradation beside which theft  
 and looting look like many vices.  
 Even murder may have more to com-  
 mend it. The men that could vent  
 their spite in the manner of the Ger-  
 man officers in Chaetau Thierry are  
 not men with whom a civilized com-  
 munity can make any sort of terms.  
 They are not noble savages they are  
 evil-minded degenerates.

**Here and There**

When you want Steaks, Chop  
 Cutlets and Collops, try ELLIS.

OFFERED FOR SALE.—The Nor-  
 wegian steamer Jacobson is now up  
 for sale and will, we understand,  
 be purchased locally for the sealfishery.

When you want Sausages  
 why—get ELLIS; they're the  
 best.

NEW COMMAND.—Capt. Kearse  
 of the Alombe has been given com-  
 mand of Job's new tern schooner J.  
 G. Joy.

When you want Roast Beef  
 Roast Veal, Roast Mutton, Roast  
 Pork, try ELLIS.

DID WELL.—There was a splen-  
 did sign of codfish on the local ground  
 yesterday afternoon, some of the  
 crews loading their boats.

WANTED.—A Vest Maker  
 apply to SPURRELL the Tailor,  
 365 Water Street.—sep10, eod.

EXCELLENT MUSIC.—The C. C.  
 band concert in Victoria Park last  
 night was largely attended. An ex-  
 cellent programme of music was re-  
 ceived.

Stafford's Drug Store, The  
 Theatre Hill, will be open every  
 night till 9.30.—sep7, tf

LOST HIS EARNINGS.—One of  
 the crew of the s.s. Gordon C. lost a  
 cash and a valuable watch and other  
 valuables which he had in his trunk  
 when the ship was destroyed.

Get the suit that is made to do  
 what you want it to do. That is give  
 you a suit for \$16.50 to \$45.00, at W.  
 GOOBIE'S, just opp. Post Office.  
 aug19, tf

eties of  
**McCormick's**  
 Candies

over 60 years)  
 McCormick's Maple Leaf—this biscuit  
 has the Maple syrup flavor and is very  
 lar.  
 McCormick's Arrowroot Biscuit—a nu-  
 merous and for children.  
 McCormick's Peter Pan Chocolates—the  
 finest with the rich chocolate coating and  
 bitful fillings.  
 Whatever your taste may be it can be  
 satisfied at the McCormick Variety.

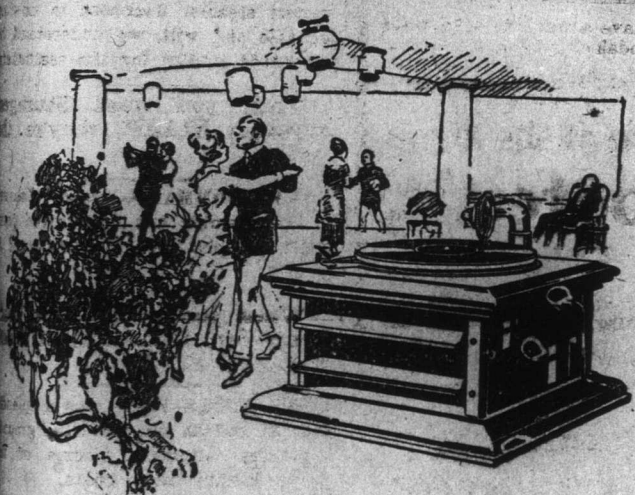
ring Co., Limited  
 NDON CANADA  
 Winnipeg, Calgary, Port Arthur, St. John, N.B.

**..NEW..  
 DRESS  
 GOODS.**

We have just opened another lot of Dress Goods.  
 You would be well advised to see these at once, as  
 quantity of some makes is limited and of the difficul-  
 ties of obtaining much variety in Dress Goods, you are  
 aware.

We are showing at the moment the following Dress  
 Goods and our values are unexcelled:—  
 NAVY, BLACK AND NIGER BROWN SERGES.  
 NAVY AND BROWN CHEVIOT SERGES.  
 NAVY AND BROWN MELTONS, at \$2.40 yard.  
 BLACK AND NAVY MELTONS in cheaper makes.  
 BLACK AND COLORED ALPACAS.  
 BLACK CASHMERES and COLOURED CASHMER-  
 ETTES.  
 BLACK MERCERISED POPLINS at 50c. and 85c. yd.  
 and upwards.  
 COLOURED MERCERISED POPLINS at 65c. and  
 85c. yard and upwards.  
 SHEPHERD CHECKS from 40c. yard.  
 FANCY COTTON AND CHEAPER WOOL TWEEDS.

**HENRY BLAIR.**



**A Vacation With Music**

For those jolly, informal dances out under the  
 stars; for delightful days by the seashore, lake or  
 river—take along a Columbia Grafonola. With  
 voices sweet and clear, playing records of all the  
 snappy, catchy music you like to hear, the most  
 popular entertainers will be

**Columbia  
 Grafonolas and Records**

Make this a musical vacation. You have no  
 idea how much added pleasure it will mean for  
 yourself and your friends. Come in and see the  
 Vacation Models—compact, sturdy, light travelers  
 and hear the newest novelty dances, the latest  
 song hits, all the lively cheerful music you  
 want for your vacation.

**U. S. Picture & Portrait Co.  
 Grafonola Department.**

**PIANO PLAYER.**

**Piano and Organ Show-  
 room Now Opened.**

Entrance by McBride's Hill, Duckworth and  
 Water Streets.  
 Come, see and hear our collection of mag-  
 nificent instruments.

**CHARLES HUTTON,**  
 The Reliable Piano & Organ Store.

Years in the public service  
 The Evening Telegram

**Subs. and Subs.**

Submarines, as classified by the  
 average person unfamiliar with them,  
 would be simply German and others.  
 But there is a more technical sub-  
 division of the species, according to  
 S. W. Clatworthy, who writes in "The  
 London Graphic" as follows:

"Underwater vessels fall, structur-  
 ally and tactically, into two main  
 heads—submarines proper and sub-  
 mersibles. Structurally, the differ-  
 ence lies chiefly in the disposition and  
 amount of the water ballast, which,  
 as everybody knows, is admitted into  
 special tanks, forming a large pro-  
 portion of the total bulk, to effect  
 submergence.

"The submarine proper has a single  
 cigar-shaped hull, of approximately  
 circular section, within which these  
 tanks are placed at the sides and bot-  
 tom amidships, and occupying both  
 ends. They are necessarily limited in  
 size and give when empty only a  
 small surplus buoyancy. In a sub-  
 mersible the tanks are exterior to this  
 hull, and between it and an outer  
 hull of boat-shaped form, lightly  
 built, as it has not to withstand un-  
 derwater pressure, this being taken  
 when the tanks are full by their inner  
 wall, the circular hull. The tanks  
 may thus be enlarged indefinitely, but  
 are limited by strategic considerations  
 the handling of too large a volume of  
 water prolonging unduly the critical  
 period of diving.

"Upon these structural distinctions  
 follow, more or less, the tactical dif-  
 ferences, and the two resultant phas-  
 es have been clearly instanced in the  
 naval war. All U-boats are submer-  
 sibles; and the U-boat campaign, il-  
 lustrates, neglecting for the moment  
 its peculiarly brutal side, something  
 of their tactics. Because of their  
 large surplus, or 'reserve,' of buoy-  
 ancy, they ride high in the water, al-  
 lowing the crews to spend a consid-  
 erable time in the open air; the  
 decks form reasonably good gun plat-  
 forms, and the shipshape hulls, re-  
 sembling those of torpedo boats, make  
 them seaworthy and comfortable and  
 give them a fair surface speed. The  
 submarine proper is ill at ease upon  
 the surface, her bad behaviour limit-  
 ing seriously the endurance of her  
 crew; she rarely carries a gun, is  
 slower and rides low in the water. She  
 is the better boat submerged, diving  
 more quickly and having greater  
 speed, due to the superior stream-  
 lining of her hull, together with great-  
 er manoeuvring power. The U. S.  
 coastal minelayers, similarly condi-  
 tioned, are also submarines proper.

"France, the pioneer country, has  
 built most of her fine boats to the de-  
 signs of M. Laubeuf, who, with the in-  
 stinctive faculty of the true engineer,  
 long ago made the distinction between  
 submersible and submarine, and, in-  
 deed, designed the first double-hull  
 boat, the Narval. The Hun U-I was  
 built in imitation of his later type, the  
 Albatros, but two years afterward,  
 and when France, America, and Eng-  
 land all possessed many underwater  
 boats, the Austro-Hun, also imita-  
 tive, has departed but little from the  
 American-Holland type in his White-  
 head. The Holland is the most fa-  
 mous of submarines proper.

"British boats have been evolved  
 from the original Holland, but de-  
 veloped a distinctive form, a neat,  
 workmanlike and seaworthy design  
 typical of English naval construction.  
 In all these types a non-water-tight  
 superstructure, which does not, there-  
 fore, affect submergence, runs almost  
 from end to end, supporting the deck  
 and covering various accessories of  
 the hull, such as hatches, capstans,  
 engine exhaust, ventilation pipes, etc.  
 and, upon occasion, disappearing guns.  
 In the Italian 'Laurenti' submersible,  
 however, the upper portion of the out-  
 er hull is cut off and the boat entire-  
 ly covered by a water-tight super-  
 structure, which carries a fine broad  
 deck, almost as wide as the vessel it-  
 self.

"The vessels already mentioned do  
 not exhaust the list of successful sub-  
 marine craft, yet, despite this multi-  
 plicity, the submarine, it must be con-  
 ceded, is still primitive, and will re-  
 main so until a single unit system of  
 propulsion has been successfully de-  
 veloped. The earliest practical sub-  
 marines were driven solely by elec-  
 tric engine. Just as the patrol engine  
 realized flight for the aeroplane, so  
 the electric motor, not dependent up-  
 on life-giving oxygen and subject to  
 no working change in weight, made  
 submarine navigation possible. But  
 mark the further complication. The  
 latter obtained its current from heavy  
 batteries, which soon became ex-  
 hausted, and the resultant tiny radius  
 of action forced designers to install a  
 second motor, the oil engine, for en-  
 erged propulsion, giving a large sur-  
 face radius.

"Despite many improvements, the  
 situation is fundamentally the same to-  
 day, and the submarine is still es-  
 sentially a slow boat."

MR. H. W. STIRLING  
 will resume lessons in Or-  
 gan, Piano, Singing and  
 Theory Sept. 17th. Pupils  
 of all grades received. Fur-  
 ther particulars on applica-  
 tion. Studio: 29 Victoria  
 Street.—sep14, 41

MIRNARD'S LINIMENT CURES GAB-  
 GET IN COWS.

**What About  
 These Coal  
 Shares?**

The opportunity is a good one.  
 \$25,000.00 worth of stock has been  
 placed on the market, and to the pur-  
 chaser of each one of these shares  
 three extra shares are given free of  
 cost.

This makes the purchaser of each  
 one dollar share the owner of four  
 fully paid up shares in the company.

The company also guarantees that  
 none of the above shares will be sub-  
 ject to any further call.

The opportunity to invest is open  
 to everybody. Get busy before it is  
 too late; no bonus shares will be given  
 after the present allotment is dis-  
 posed of.

You can't lose. Invest to-day.  
 For every single dollar you invest  
 in this proposition you get four 1  
 dollar shares in return.

THE ST. GEORGE'S COAL FIELDS,  
 LTD., Cabot Bldgs., 262 Water St.  
 sept17, tf

**Battle as Seen  
 From the Air**

With the French Armies, Sept. 4.—A  
 description of the battle for the Nestle-  
 Noyon Canal has been given to your  
 correspondent by a French aviator,  
 who dislocated his elbow in a forced  
 landing when he was attacked by  
 three Germans after losing his own  
 control in the clouds. He said:

"What a pity one of you news-  
 paper men can't fly your own self and  
 see the show the way we do. It is a  
 real picture of war as one used to  
 read about it, with clouds of smoke  
 shells bursting everywhere and in-  
 fantry dodging forward in open order.  
 I outdistanced in patrol five chasse  
 machines with a flying mission to fly  
 low to harass the boche infantry and  
 do whatever reconnaissance work was  
 possible. The German planes kept  
 very high and didn't interfere much,  
 save to attack stragglers. They seem  
 to share the loss of morale of the  
 rest of the army, but, like the rest,  
 fight well enough when they have got  
 to."

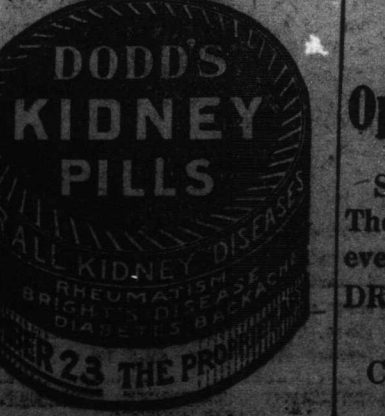
"We patrolled a section of the canal  
 from Libermont to where it bends  
 round Chevilly. It was the latter  
 region where the scene was most in-  
 teresting—the enemy fighting hard  
 supported by plenty of guns. A battery  
 of four light tanks came out in line to  
 cross the canal cutting, which was  
 waterless save for a patch of semi-  
 liquid mud in the middle. Behind each  
 was a group of infantry in skirm-  
 ishing order. The tanks looked like  
 those 'looper' caterpillars as they  
 reared upon the western edge of the  
 cutting. A shell landed right in front  
 of one as it stood there.

"Tanks Crawl Through Mud.  
 "As I flew round in a circle, I  
 thought the tank was smashed, as it  
 didn't move for nearly a minute. Then  
 it resumed its progress down the bank.  
 No hatch was visible in the wood op-  
 posite, but they evidently were firing  
 steadily, as our infantry kept cover be-  
 hind the tank.

"Three tanks wallowed through the  
 mud and successfully climbed up the  
 further bank and moved along the  
 edge of the wood toward the road  
 leading to Chevilly village. Their  
 fire permitting our infantry to get  
 across and disappear into the wood,  
 working northward towards the road.  
 A moment afterward another group  
 accomplished a similar manoeuvre  
 higher up, and they too, converged  
 southward upon the road. The tank  
 that had been injured seemed to have  
 lost its power. It stuck in the mud  
 with the tractors churning uselessly.

"I flew forward over the village  
 and spotted a score of Germans run-  
 ning back up the hill from the wood  
 through the cemetery on the western  
 outskirts. I gave them a round of  
 bullets from 60 metres, and several  
 dropped, but the fire from the villa  
 beyond the cemetery was very hot,  
 and I didn't wait long. I circled back  
 over the canal and flew along it, rak-  
 ing the edge of the wood below where  
 the first battery of tanks had crossed.  
 As I came to that point I saw a third  
 group make the crossing. One on the  
 left ambled along the bank and push-  
 ed just above the tank in the mud.  
 "The next time I passed, a few  
 minutes later, they had attached a  
 steel hawser and were tugging him  
 out, with shells falling all around.  
 I saw no more there, but heard after-  
 ward that they got him out all right,  
 and both managed to reach the village.

"The patrol leader then signalled  
 us to cover the village in close order,  
 as there were enemy planes above."



**Congoleum Mats!**

**WHERE!  
 WHAT!  
 WHO!  
 HOW!**

Cover over that worn spot  
 in your canvas with a CON-  
 GOLEUM MAT.

Have you an Artistic Eye?  
 See those dainty Patterns,  
 all new, good heavy quality

Prepare now. Preparedness  
 means readiness for your im-  
 mediate wants.

These are selling at only  
**30c.**

**S. MILLEY.**

**Sportsmen, ATTENTION!**

We wish to call your attention  
 to our stock of  
**SHOOTING SUPPLIES**  
 which is just as large as ever  
 this year.  
 All our goods were bought at  
 last year's prices, consequently  
 we are enabled to quote you  
 prices lower than anybody in  
 the city.  
 Come along quick and make  
 your selection.

**Martin-Royal Stores Hardware Co.**

**And the Worst is Yet to Come—**

**Open Every Night.**  
 Stafford's Drug Store,  
 Theatre Hill, will be open  
 every night till 9.30.  
**DR. F. STAFFORD & SON,**  
 Wholesale and Retail  
 Chemists and Druggists,  
 St. John's, Nfld.