

## OATS

SHIP your  
OATS to

**G. B. MURPHY & CO.**

and obtain HIGHEST PRICES,  
also prompt settlements.

214 GRAIN EXCHANGE, WINNIPEG, MAN.

REFERENCES: EASTERN TOWNSHIPS AND UNION BANKS.

## OATS

## OATS



DAILY SERVICE

TO

ALL POINTS

**EAST, SOUTH  
AND WEST**

Connection with Canadian Northern  
trains from points North and West.

**PULLMAN  
SLEEPING CARS**

See your local Agent, or write

**H. Swinford,** General Agent.  
**R. Creelman,** Ticket Agent.

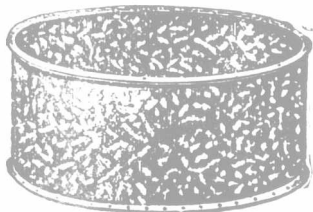
**341 MAIN STREET  
WINNIPEG**

### TOWN OF NANTON

Southern Alberta on the Line of C. P. R.  
Daily service. Fifty seven miles south of  
Calgary. If you want to buy Beautiful Town  
Site Lots, Choice Farming Lands, and get in  
on the ground floor in the very best section,  
write to us promptly, as the opportunities to get  
some of these choice lands are daily growing less.  
It will pay you to come and select for yourself.  
We will give you a square and honest deal, and  
place you on the road to success.

**McPHAIL & McINTYRE.**

### STEEL TANKS FOR ALL PURPOSES.



Corrugated  
and Plain.  
Galvanized  
Steel Tanks.  
Portable  
Grain Tanks.

**RED RIVER METAL CO.**  
51 & 53 Aikins St. Winnipeg

### Imperial Bank of Canada

HEAD OFFICE: TORONTO

Capital (Paid-up) \$3,000,000  
Reserve Fund \$3,380,000

**D. R. WILKIE,** President and Gen'l Manager.  
**ROBT. JAFFRAY,** Vice-President.

AGENTS GREAT BRITAIN—Lloyds Bank,  
Limited, Head Office, Lombard Street, London.  
BRANCHES in Manitoba, Saskatchewan, Al-  
berta, British Columbia, Quebec, and Ontario.

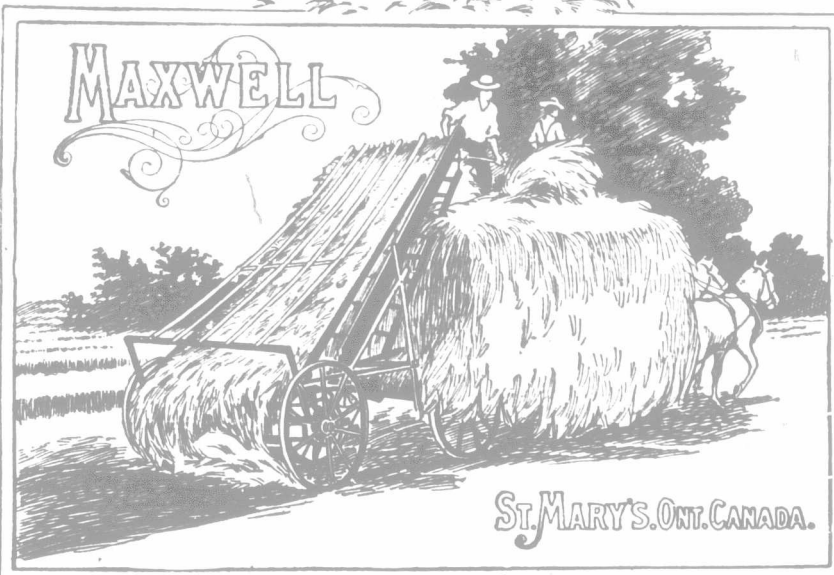
WINNIPEG BRANCHES

North End—Corner Main street and Selkirk  
Street. **P. P. JARVIS,** Mgr.  
Main Office—Cor. Main street and Bannatyne  
Street. **N. G. LESLIE,** Mgr.

### SAVE YOUR HAY & SAVE EXTRA LABOR

SPECIAL  
LABOR SAVING  
TOOLS

MAXWELL  
TEDDER  
SIDE DELIVERY  
RAKE & LOADER.



ST. MARY'S, ONT. CANADA.



IS THERE AN  
AGENT IN YOUR  
DISTRICT

IF NOT  
ADDRESS THE  
FIRM DIRECTLY

**DAVID MAXWELL & SONS, ST. MARY'S, ONTARIO, CANADA.**

## The Pioneer Limited

There is no train in service on any railway  
in the world that equals in equipment  
The Pioneer Limited train from St. Paul  
to Chicago via the

### Chicago, Milwaukee & St. Paul Railway

The railway company owns and operates  
the sleeping and dining cars on its trains,  
and gives to its patrons an excellence of  
service not obtainable elsewhere. The  
buffet cars, compartment cars, standard  
sleeping cars and dining cars of The Pio-  
neer are the handsomest ever built.

#### TICKETS

365 Robert St.  
Phone 98

**W. B. DIXON,**

**N. W. P. A.,**  
St. Paul

### Western Lands

For information regarding western homes, call or write to  
**Balfour Broadfoot Land Co., Box 293, Hamilton St., Regina, Sask.**

## Buy a Farm

I HAVE over 6,000 acres of  
improved lands for sale  
ranging from \$12 up to  
\$30 per acre to choose from.  
This is one of the best wheat-  
growing districts in the West.  
Write me for particulars and  
government reports, or call at  
my office in Hyde Block.

**J. R. AGAR, Real Estate & Auctioneer,**  
Balgonie, Sask.



**SMYTH, HARDY & CO., of Calgary,**

Handle all kinds of power for

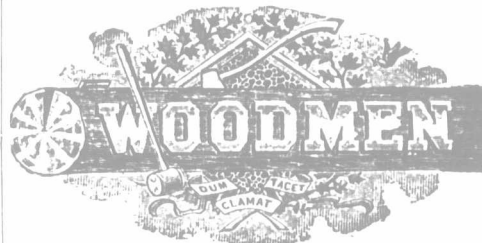
**FARM AND RANCH PURPOSES.**

Write them for catalogues and prices of Cana-  
dian Airmotors and Gasoline Engines.

Address, Box 3



### ASSESSMENT SYSTEM



Incorporated by Special Act of the  
Dominion Parliament, 1893.

Enquire for further information to

**C. C. HODGINS,** Head Con. Com., **W. C. FITZGERALD,** Head Clerk,  
Lucan, Ont. London, Canada.

**JOHN McMILLAN,** Manager for Manitoba  
411 Main St., Winnipeg.

LOWEST RATES OF ASSESSMENT GIVEN BY ANY  
INCORPORATED BODY IN CANADA.  
(For Men—Ordinary Class.)

Age	\$500	\$1000	\$1500	\$2000	\$2500	\$3000
16	33	60	99	130		
17	33	60	99	130		
18	33	60	99	130		
19	33	61	101	132	181	216
20	34	62	104	136	184	219
21	35	64	105	138	186	222
22	35	65	107	140	191	228
23	36	66	110	144	194	231
24	37	67	111	146	196	234
25	37	68	113	148	201	240
26	38	70	114	150	204	243
27	39	71	117	154	206	249
28	39	72	119	156	208	252
29	40	73	120	158	211	255
30	40	74	123	162	218	261
31	41	76	125	164	221	264
32	42	77	126	166	226	270
33	43	78	130	170	229	273
34	43	79	131	172	231	276
35	44	81	134	176	239	285
36	45	84	139	182	243	294
37	47	86	143	188	244	303
38	49	89	146	192	250	309
39	50	91	151	198	266	318
40	52	96	158	208	281	336
41	56	102	164	222	299	357
42	59	108	175	231	316	378
43	62	114	189	245	335	399
44	65	120	195	260	352	420
45	69	126	205	271	370	441
46	75	135	224			
47	84	155	247			
48	88	162	260			
49	97	173	278			
50	105	182	312			
51	115	215				
52	121	225				
53	137	232				
54	151	276				
55	164	309				

\$384,039.18

paid to widows and or-  
phans to June, 1904.  
Reserve - \$117,000,000