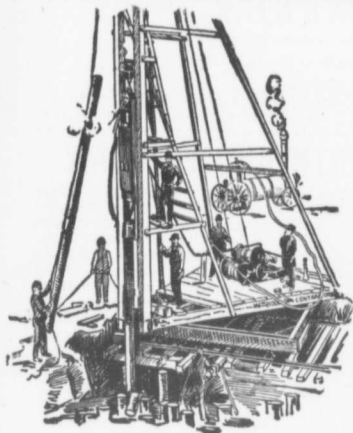


8, 44 cents; bends, 6"x5-8, 75 cents; junctions, 6"x5-8, \$1.10; balance to Henderson & Taylor, as per tender. Lumber, T. Prefontaine & Co., spruce planks, \$30 per 1000 feet. Montreal Lumber Company, white pine, tongued and grooved, \$19.50 per 1000 feet; white pine, rough, \$18 per 1000 feet. G. A. Grier, tamarac floats, \$14.50 per 1000 feet; yellow pine, \$53.73; McCord, \$54.33, Delorimier; Supply of stone—Latreille Frère, curbstone, 6"x20"x3", 43 cents lin. foot. Jos. Roch, curbstone, 6"x20"x3",

curved, 52 cents per lin. foot; curbstone, 9"x12"x4", 47 cents lin. foot; curbstone, curved, 9"x12"x4", 57 cents lin. foot. E. D. Lawrence, scoria blocks, 18", \$44 per 1000; scoria blocks, 9", \$49.50 per 1000. Paints and oils—Ramsay & Son, as per tender, excepting turpentine, which is to be given to Imperial Co., at 87 cents.—Saxe & Archibald, architects, have awarded the contract for large stable on Colborne street to Riordan Bros. Same architects have awarded contracts as follows for

alterations and repairs to house, 374 Mountain street, for F. C. Wilson: Masonry, P. A. Brown; carpenter work, D. H. Scott; roofing, G. A. Reed & Co.; plumbing, J. W. Hughes; painting, H. Morgan & Co.; electric wiring, Montreuil Electric Co.—Huot & Payette, architects, have awarded the contract for alterations to warehouse and store for the Masson Estate, on St. Paul street, as follows: General contract to D. Houle & Co.; electric elevator, Otis Electric Elevator Co.



PILE DRIVING

on land or water by Steam Pile Drivers or Drop Hammers.

**Portable Boilers
Hoisting Engines
Pumping Machinery**

TO LET

Bridge Building, Trestle Work, Wharves, Dams, Diving Submarine Work and General Contracting.

WM. HOOD & SON
10 Richmond Sq. - MONTREAL

DEBENTURES

Municipalities contemplating the issue of Debentures will find it to their advantage to communicate with

G. A. STIMSON & CO.

Investment Dealers

24 and 26 King St. W. - TORONTO

The DeLano-Osborn Engineering Co., Limited
506 Manning Chambers, Toronto.

CONSULTING AND DESIGNING ENGINEERS.

Consultations, Plans, Specifications and Superintendence for Bridgework, Steel Building Frames, Portland Cement Plants, Power and Miscellaneous Plants, Water Power Development, Electric Railways, etc.

*Inspectors of Structural Material
and of Railway Equipment.*

**Pittsburgh Testing Laboratory,
LIMITED**

*Inspecting and Metallurgical
Engineers and Chemists*

SPECIALTIES: Inspection of RAILS and all material for BRIDGES, BUILDINGS, and other structures, cast iron pipe, wood and steel railroad cars.

MANUFACTURE AND ERECTION.
Expert examination and reports, chemical analyses and physical tests of all kinds.
Cement Testing.

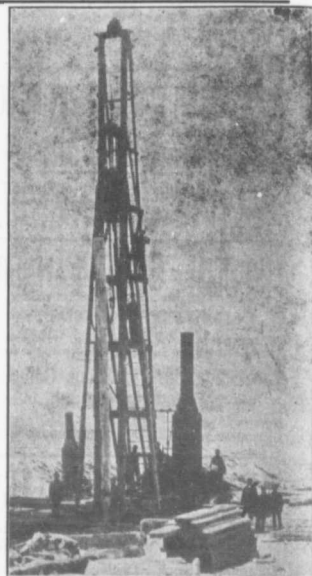
146 St. James Street, - Montreal, P.Q.

THE STEEL "CHAMPION" IS THE KING OF GRADERS
— "CHAMPION" Road Machines are now in use in every Province of Canada.



Address for 20th Century Catalogue

The Good Roads Machinery Co., Limited
(Late Killey-Beckett Engine Works)
144 YORK STREET - HAMILTON, ONT.



PILE DRIVING

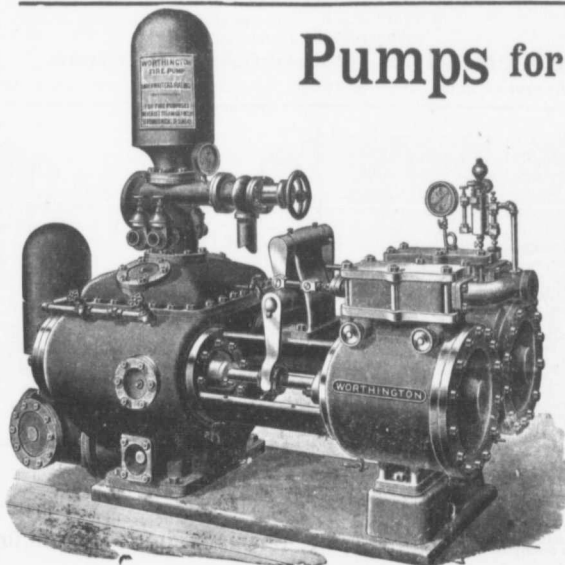
and Foundation Work.

By 5-ton Automatic Steam Pile Hammer, Water Jet or Drop Hammers, Dock Building, Submarine Work and Dredging.

BUILDING MOVER AND WRECKER

General Contracting.

JNO. E. RUSSELL, - Toronto
908 Queen St. E.—Phone M. 2007.



Pumps for Waterworks

**Waterworks Systems
Installed**

*Steam, Hydraulic, Electric,
Gasoline, Air Lift and
Automatic Rams.*

**Steam Boilers and
Filters**

Write for Prices and Particulars

The John McDougall

CALEDONIAN IRONWORKS CO., LIMITED

MONTREAL, P.Q.