

CORRESPONDENCE PAGE OF FASHIONS & BEAUTY

## The Young Girl and Her First Evening Caller

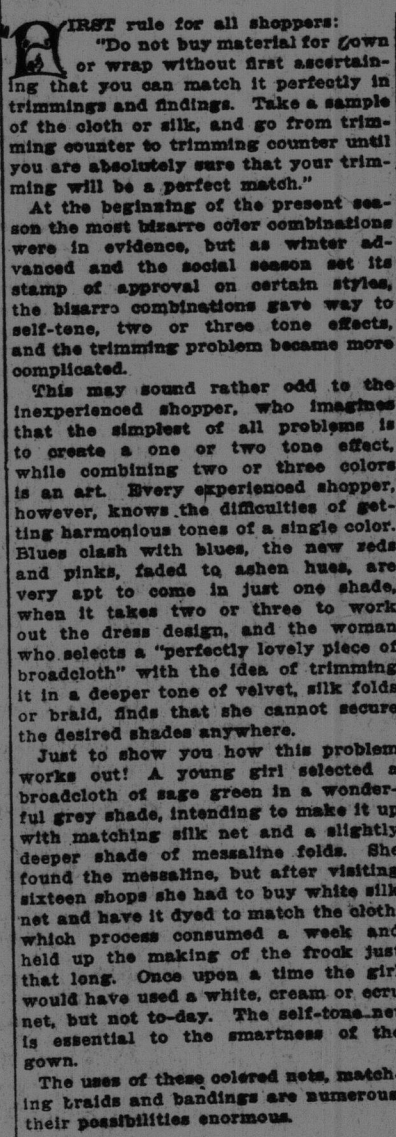


FIG. B—GENDARME BLUE MESSALINE AND NET DYED TO MATCH, WITH  
SELF-TONE BRAID TRIMMING.



FIG. C-EMBROIDERED MESSALINE  
WITH BUTTON TRIMMING.

[illegible]

**Hot Cheese Sandwiches.**—A good way to use up dry cheese, either American, Swiss, or Edam. The last two grate down to the very rim and are acceptable for seasoning. Slice bread to make a day old, thin, and slice into rounds. Spread the rounds thickly with cheese, flavor with Worcestershire and just a touch of cayenne and mustard. Lay two halves together with the cheese between. Have butter melted in a blazer, or if you like olive oil use that instead of butter. Fry the cheese sandwiches golden-brown, first on one side then on the other, and serve piping hot on hot plates. Coffee, ale or beer should accompany these sandwiches.

coals, add the rose water and bones and continue heating until cold.

The bismuth may be omitted, if desired, and the rose water may be substituted for rose water.

The young girl who has no complexion defect and does not need the attentions of a beauty specialist may still have a tendency to yellow the skin in the face, especially if she spends much time over her books. She should drink quantities of pure water, dilute lemonade without much sugar and this simple oatmeal lotion on her face.

To the liquid add one ounce of oatmeal and one quart of water.

It boils for ten minutes then let it settle and strain it through a cloth. Add a few drops of alcohol and the juice of a large or two small lemons. Apply with a cloth.

The woman with the oily skin she never washes her face without adding a drop of a mixture of bismuth to the water.

When dressing to the face of warm water. When dressing to the face, she should apply the following:

Powdered borax..... 1 ounce  
Glycerine..... 1 ounce  
Water..... 1 pint

Dissolve the borax in the water. Wash the face and add the glycerine. Be careful not to get it into the eyes or the nostrils of camphor.

Apply this lotion to the face and wash it off with white in the ordinary face powder.

[illegible]

It gave the effect of two-tone, the black beads, sudden change of the color. The same effect could be secured by inserting bluette cloth of silk, with new beads to match and sprinkled with the same beads. The new beads, the black and silver beads interspersed on the cloth. With the new reds, catwabs, etc. the coppery gauge is often used.

Next in importance to securing just the right shade of color is some successful selection of braids, for they are used on cloth, silk, net, and chiffon or other light weight fabrics. Several very good sample of a few of the braids are shown in this connection. Figure A is a very effective house gown for receptions, days a black, black, card parties, etc. in the photograph. The braids are of a light color. The shirt is draped to give a tunic effect and the blouse as cut as to give the effect of a continuous line down the left side.

The black and ever-blue section are outlined by black bands of velvet in a shade a trifle deeper shade than the fabric.

## Shopping Hints

The up-to-date girl now has—  
Evening slippers of gold sans,  
Socks of gold, and golden-yellow silk  
stockings, to wear with white evening  
rocks.

A poinsettia, made from velvet, silk  
and gold, is quietly doing the thing  
for muff or fur-piece, instead of the  
violets so popular last season.

A head bag with gorgeous old-fashioned  
flowers in pink, blue, green and  
purple on white ground, mounted on  
gold frame.

A narrow two-piece flat collar  
heavy lace, to wear on her collar  
course—gold and silver collars are in  
vogue now in width and the shape of  
the collar-over. They meet back and form  
in "V" shape, and have replaced the  
high, pointed collar worn earlier in  
the season.

the vast throng of fans for dancing parties, just the size for a man to sit in his pocket and not lose.

Watch-fobs of leather or very heavy grograin ribbon with a heavy gold-plated monogram instead of a seal.

A black fur grenadier hat, lynch pin fastened, with a gardenia or two on the left side.

For evening frocks, the dulllest and most faded of colors. Ashes-of-roses has replaced pink, bluettes the green, and that has superseded baby-blue. Blouette color is used instead of canary or corn yellow, while grey, mauve or even London smoke are seen in chiffon and silk for party frocks.

**Recipes for Chaffing Dish Part**

**C**HILL winter evenings and chaffing dish are extremely harmonious. And a woman ne appears to better advantage than w presiding over a gleaming chaffing d with all sorts of dainty impleme around her delft fingers.

One factor for success in handling the chafing dish is to have everything ready to go. In the kitchen, have ready the following: 1. Do not attempt to beat eggs or sauté or fry but melt in butter. 2. Have ready the oil, should be desired.

**Oysters à la Poitevine.**—Have oysters ready. 1. Drain home two dozen oysters. 2. Season with salt and pepper to their own liquor. Have ready 1 tablespoon of butter, 1/2 cup of cream, 1/2 cup of milk, 1/2 cup of cream, paprika, and nutmeg, the beaten yolks of 4 eggs and 1/2 cup of cream. 3. Bring the oysters to a boil in their own liquor. When plump, at once drain them. 4. Melt the butter and the oysters in another. In the chafing dish melt the butter, add the oysters and the cream, milk, paprika and nutmeg. 5. When the oyster liquor, and cream, liberal dash of paprika and a small amount of salt are added, stir the dash from above the flame and in gently the yolks of the eggs. 6. When the mixture is thick, add the sauce thickens to a creamy slateness. Drop the oysters in just before cooking. Have ready one at the most, and serve at once on squares of toast.

**Beefsteak à la Newberg.**—If you cannot lobster remove from the pan and expose it to the fire before cooking. Have ready one in

The gumpie is of net grade and is finished with the cloth and padding of the gumpie. The effect of which may be heightened if silver grass is produced under the gumpie. The gumpie is finished with a tiny and of embroidery done in two shades of blue. The gumpie is finished with a grid of velvet is finished with a tiny showing hellorope and delicate. The gumpie is admirably suited to the slender woman and because the gumpie is admirably suited to the slender woman, it can even be attempted by the slender woman, provided two-tone.

Here you have a combination of three shades of braid, all the same tone on the same shade of braid. The gumpie is admirably suited to the slender woman and because the gumpie is admirably suited to the slender woman, it can even be attempted by the slender woman, provided two-tone.

Here you have a combination of three shades of braid, all the same tone on the same shade of braid. The gumpie is admirably suited to the slender woman and because the gumpie is admirably suited to the slender woman, it can even be attempted by the slender woman, provided two-tone.

the two frocks give you some idea how green, cream or eoru net can be worn. The white net has been given place to those of new colors. The green and blue chiffon cloth dyed to match the color of the dress.

Figure C shows an effective blouse made of green messaline and chiffon which was made for wear with the two-piece Directoire suit. The blouse is embroidered in self-color silk thread and the sleeves are trimmed with button bands made of the green silk with which each star of green beads in the center of the button. Similar treatment is given to the cuffs. On the shoulders yet the effect is very dressy and harmonizes beautifully with the green cloth skirt and coat.

A feature of the dress is the trimming of the bodice with metallic cording, gold and copper, etc., which is introduced in the most harmonious way, especially in the banding or in buckles. White satin ribbons for evening are also used in the gold lace, over the white net. The same is used as for trimming.

*Mary Dean*

---

## for To-Morrow

rightened by silver gauze beneath and  
silver lace trimming.

A new ruching of rose-colored gauze  
ribbon edged with fine lace or net.

---

The up-to-date girl now has—  
Evening slippers of gold gauze, a  
loft of gold, and golden-yellow silk  
stockings, to wear with white evening

### HINTS FOR THE HOUSEWIFE

Preserving Patent Leather Shoes  
Wash shoes frequently with a mild soap and water solution. Do not use harsh detergents or solvents. Rinse thoroughly with clean water. Dry shoes in a well-ventilated area, away from direct heat or sunlight. Apply a leather conditioner or polish to keep the leather supple and shiny. Store shoes in a cool, dry place, away from moisture.

spoon of butter, half a cup of sherry, the beaten yolks of three eggs and half a cup of cream, salt and paprika. Cut the lobster into good-sized dice and cook for ten minutes in the butter and sherry. Add one tablespoon cream to the beaten yolks. Add the rest of the cream to the simmering lobster, season with paprika and salt, and when it comes to the bubbling point, add the beaten yolks lightly stirring all the while and serve warm.

YOUNG man is coming to call on me some night next week. It is the first time Mamma has invited a young man to call. I want to ascertain him. What do I do? Do ask him to come again?"

This is an extract from *Letter just received*, and the request is so similar to others which have reached my desk, that I think the young girl and her suitor, call it a little call.

TO THE EDITOR, who comes and goes at the grave mistake of chattering on the subject, and giving me the chance to say any old occasional "yes" or "no." The clever girl simply guides conversation and lets the young man do the talking. He is, of course, very and perfectly willing and capable of doing.

TO THE YOUNG man right along conversational paths, and he will get along very nicely, thank you kindly. I know, a very sweet girl who is absolutely sure of her own mind, yet men always call her "clever." She might be able to tell you who the president is.

please and rather than maternal strain and consultation, the narrations of the writer quoted above seem highly unnecessary. But there are still many young girls whose parents do not permit them to go to school, and who are kept at home as past, and to whom the first of a young man is an event. He may be just the same ladde with whom the girl has walked to and from school. They may have played many a game of tennis together, skated and skied or sailed together, and been friends; but such is not the case. He comes to her with his party manners, and with his party manners, he somehow altered young man is coming to make a formal call.

[illegible]

the yellow slaves, the homes where the negro or stevede heating apparatus keeps the temperature of the room at a comfortable level, and their elders—now near wash basins after supper time—sulla, lawns, betistles and organizes the young men and women. A pretty pair of black or brown slippers with matching lisle stockings complete a neat costume for the home.

In very large cities formal calls are made by men as late as 9 o'clock, but in the country the hour is earlier.

for the youngest. If there is a servant, she opens the front door for the young man, and she takes off his gloves, in the hall, and the young hostess awaits him in the parlor, or in a sitting room. After the mother and father are also present to be introduced, then later the elders express themselves. The young man is then taken to his country, chaperon is not necessary during an evening call. If the girl opens the door to the young man in the hall as he

removes overcoat and hat.  
Many a young girl in an agony of embarrassment has her caller find her uninteresting and the evening stupid.

him.

*Prudence Landish*


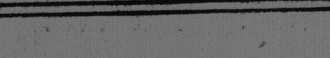


FIG. A—HELIOTROPE SATIN FINISHED CASHMERE WITH VELVET BANDS—A SOUTHERN BRAND.

If perplexed in matters of dress, beauty, or etiquette, write and stamped envelope for reply. This is a quicker method than having your question answered in the columns of the paper. Besides, you receive a personal, intimate answer. Be careful to address your return envelope accurately. Letters come back to us every day, stamped "insufficient address" or "party cannot be found."