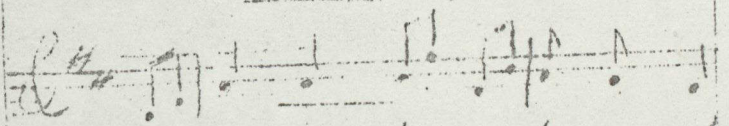


Pour un Cant. à l'archevêché
(air) "Jesus, my Lord, my God"



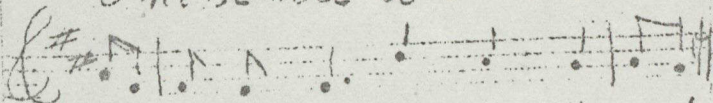
O-ta-cha-risti-wanik



Je-sus ki-pu-na-ti-ko-naw



O-ki-se-wa-ti-se-we-na



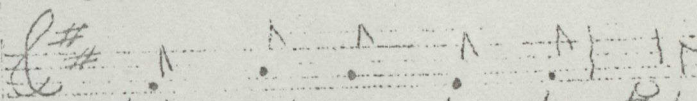
ki-ta-a-sus-ka-ma-kayak



Haw-ma-ma-wi



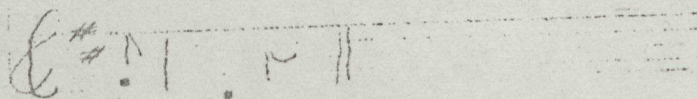
ye-mi-tik-nas-pi-



tehi-wi-sa-ki-ta-tak



ma-pi-tehi-wi-sa-ki-



ta-tak

- 1 -

D C D D D D D
D D D D D D

D P4 D A D D

PC D D b L D G

- Refrain -

D L L D D D A

D A D D D D C [D D D]

- 2 -

D C G A P D D

9 b + b D D C G

D L D D P C L G

A D 9 b + < D D A

- 3 -

D b D G D D C D

D C D D D C b D

D C D C C C G

P P G G C C b D

- 4 -

C V C V C L C C

D A D C P A L P D

D b C V D P D C

D b C V D C b C

- 5 -

L D A D D D D

b P A L D G

G D D b L 9 D

D b D P 4 D C

- 6 -

D D A L A D G

C A b D C G C

P D D D D C C

9 P 9 D P C

Composé par S. G. Charlebois