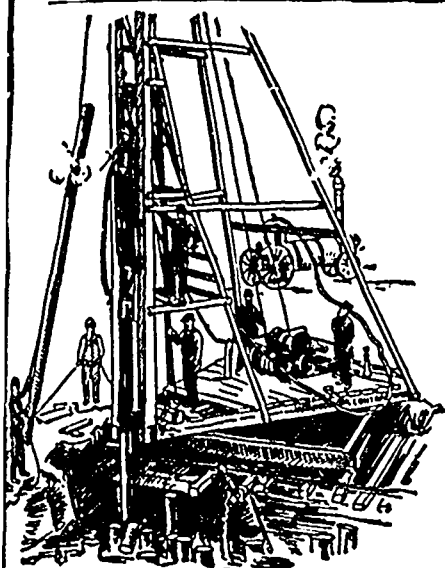


MUNICIPAL ENGINEERS, CONTRACTORS AND MATERIALS



PILE DRIVING

on land or water by Steam Pile Drivers or Drop Hammers.

**Portable Boilers
Hoisting Engines
Pumping Machinery
TO LET**

Bridge Building, Trestle Work, Wharves, Dams, Diving Submarine Work and General Contracting.

WM. HOOD & SON
10 Richmond Sq. - MONTREAL

Paving Granite

Granite Sets for Street Paving. — CURBING cut to any shape ordered. — Fine Rich Colors for Building and Monumental Purposes.
Quarries, St. Phillippe d'Argenteuil, P. Q.

Address all communications to
JOS. BRUNET - COTE DES NEIGES, MONTREAL

**Sicilian
ROCK ASPHALT**

Rock Asphalt Powder and Rock Asphalt Mastic, for street paving.

Contractors, write us for close prices.

GEORGE W. REED & CO.
873 and 785 Craig Street, - MONTREAL

Please mention the CONTRACT RECORD when corresponding with advertisers.

**ORE AND STONE
CRUSHERS
HOISTING MACHINERY
RAILWAY SUPPLIES
BOILERS AND ENGINES**
Prices furnished on application
MARSH & HENTHORN,
BELLEVILLE, ONT.

Engineering Contract Company

Main Office: EMPIRE BUILDING, 71 BROADWAY, NEW YORK
Canadian Office: TRIVICK BUILDING, TORONTO, ONT.
HENRY F. DUCK, MANAGER FOR CANADA.

**BRIDGE SUB-STRUCTURES, WATER POWER DAMS, CANAL WORK
and CAISSON FOUNDATIONS a Specialty.**

PORTLAND CEMENT

Samson Brand Magnet Brand
MADE AT SHALLOW LAKE, ONTARIO

Our celebrated SAMSON BRAND has been before the public for many years, and has made hosts of friends among Contractors and Municipal Corporations until it has become one of the leading Cements on the market to day, being excelled by none. This year we have decided to place the MAGNET on the market, and respectfully ask consumers to give it a trial. It will, we think, do its own advertising.

Correspondence invited.

GEO. S. KILBOURN, Secretary-Treasurer.

WORKS: Shallow Lake, Ont. - HEAD OFFICE: Owen Sound, Ont.

**Dominion
Bridge
Co., Ltd.**

P. O. Address, MONTREAL, P. Q.
Works at LACHINE LOCKS, P. Q.

STEEL BRIDGES

For Railways and Highways
Piers, Trestles, Water Towers
Tanks, Buildings, Roofs, Girders,
Beams and Columns

Toronto Agent: **GEO. E. EVANS,**
38 Canada Life Bldg., TORONTO, ONT

W. & F. P. CURRIE & CO.

MONTREAL

Importers of

SEWER PIPES,

CHIMNEY TOPS,

VENT LININGS,

FLUE COVERS,

FIRE BRICKS,

FIRE CLAY,

WHITING.



PORTLAND CEMENTS,

HIGH GRADE ENGLISH

B. S. & Co. "ANCHOR,"

ALSO OTHER BRANDS,

PLASTER OF PARIS,

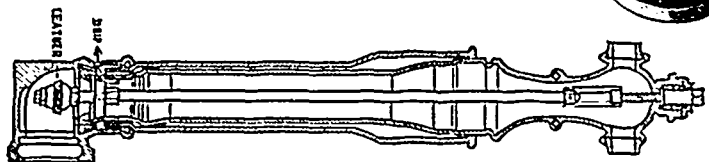
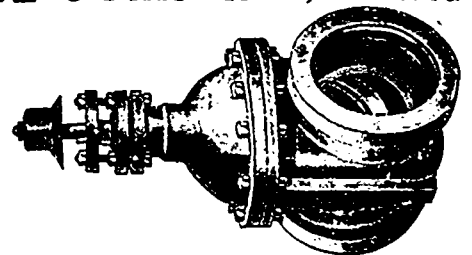
BORAX,

CHINA CLAY.

The KERR ENGINE COMPANY, Limited

OUR goods are recognized as of the first quality by all who have used them. Information and prices given cheerfully upon application.

WALKERVILLE, - ONTARIO



THE CANADIAN SEWER PIPE CO.

MANUFACTURERS OF . . .



— FOR —
**SEWERS,
CULVERTS
AND
WATER PIPES.
INVERTS**
For Brick Sewers

Write for Discount
TORONTO, ONT.

ST. JOHNS, P. Q. HAMILTON, ONT.