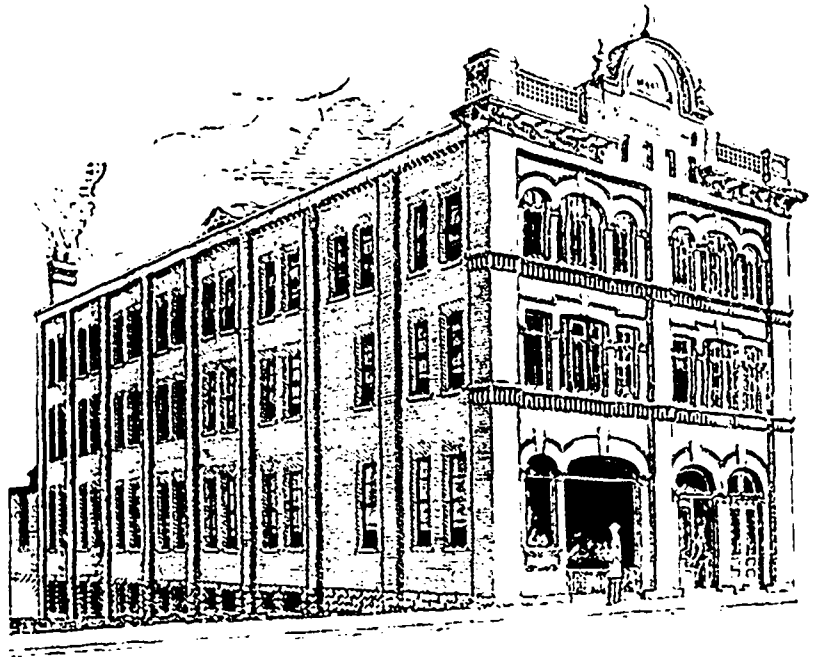
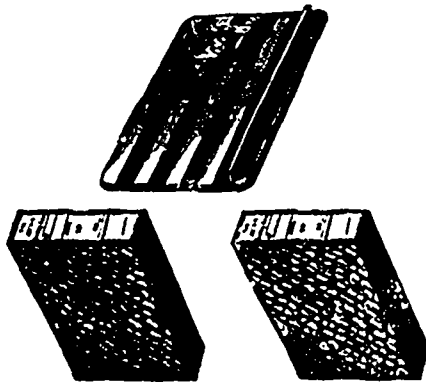


A PROGRESSIVE INDUSTRY.

WHEN an article possesses genuine merit the public may generally be counted upon to find it out. This remark applies in a marked degree to the "Eclipse" file and "Eclipse" binding case. It is only about seven years since the Eclipse Office Furniture Company, of Ottawa, Limited, was organized for the manufacture of the "Eclipse" file and other office appliances, and to-day the "Eclipse" is the leading file in the Dominion of Canada, besides being largely used in the United States, Great Britain, Australia, South Africa and India. Its popularity is due to its convenience, durability and finish. In addition to the standard "Eclipse" file, the company are constantly bringing out new ideas in the filing line. Last year they introduced a new two-arch file, the "Ottawa," which supplies the wants of those who wish a low-priced article. They have just this month brought out their new "Eclipse Self-Acting" file, which promises



The Eclipse Office Furniture Co. s. Limited, Building.



to be very popular with the trade and with the public. Its merits and the applicability of its name, "Self-Acting," are readily seen by the user. We refer to the company's advertisement on page 15 of this issue for details about this latest production of the Eclipse Company.

The cut at the top of the page shows the extensive premises now occupied by the company. Their business developed so rapidly that 18 months ago they found it necessary to build this large factory and equip it with the most modern machinery.

Die-cutting, stamping, japanning and electro-plating are all carried on under experienced workmen. The making of dies, and the articles produced by dies, are the specialty of the company, and they have, therefore, in addition to files and such like appliances, devoted much attention to the production of special lines of hinges, drawer handles, and other articles involving the use of dies. It will be of interest to fancy goods dealers to know that they are turning out large quantities of steel snow shovels, one line of children's in bright vermilion color being very attractive.

The Eclipse Company send out no travelers, relying on the quality of their goods, together with such advertising media as THE BOOKSELLER AND STATIONER, to bring their goods before the trade. All the leading wholesale stationers handle their goods, or they can be had from the company direct

THURINGIA DOLL FACTORIES.

The manufacture of dolls in Thuringia began about 50 years ago, although other toys have been made as far back as the middle ages. Even in the commonest wax doll, a number of different artisans are employed to make its various parts.

Certain workmen make the arms and legs; others put them in boxes and place them in the sun to dry; the arms and legs are dipped into a red dye by others to give them a flesh color; the sewing and stuffing is done by other workmen, and still more are engaged in painting the eyebrows, lips, etc.

The eyes are blown out of tubes held over a strong flame, and fixed in the head by people who do this alone. Finally, each workman carries his finished part to a manufacturer who puts all the parts together.

Making the wigs is an entirely different part of the trade. Mohair is the usual material employed, and a great deal is imported from England for the purpose. Sometimes, in the most expensive dolls, human hair is used.

A dozen factories are engaged exclusively in making china heads. These are made out of a mixture of china clay, quartz sand, feldspar and kaolin. After going through a number of operations, they are baked for about three days in an intense heat and then painted.

Manufacturers of dolls employ more than 200 hands in dressing them. Recently they have been dressed to represent well-known people. Khaki dresses are being shipped to the English market.