

Miners Wanted

TO CHEW,

PAY ROLL.

Plug Tobacco

WANTED.

At the several collieries of the Dominion coal co. Limited, skilled coal miners and mine laborers.

Apply on the works Or by letter

Dominion Coal Company, Ltd

Genuine Garlock Packings

FOR ALL PURPOSES.

**Pipe and Boiler Coverings,
ENGINEERS SUPPLIES.**

also

**"Tauril" High Pressure Jointing
the Best Sheet Packing yet
Produced.**

THE GARLOCK PACKING CO.
HAMILTON, ONTARIO.

Used by Collieries in Lancashire, Staffordshire
& Yorkshire

'XTERRA'

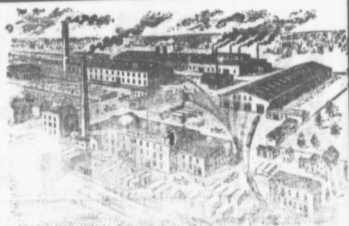
COLLIERY LAMP OIL.

For Maraut, Mussels, Defector or Closed Lamp

PURE WHITE FLAME

E. WOLASTON, Totten St MANCHESTER
Sole Representatives for Canada, AUSTEN BROS.,
Halifax, N. S.

LOW PRICE



—MANUFACTURERS OF—

RAILWAY
STEEL &
MINING

CARS,

CAR WHEELS
FORGINGS &
CASTINGS

Church Pews,
Fittings for Stores, Schools, &
A SPECIALTY.

Large Stocks of Foreign and Domestic Lumber on Sale.

Rhodes, Curry & co., Ltd.
Branch ROBBIE STREET,
HALIFAX, N. S. AMHERST, N. S.

BUILDING MATERIALS
GENERAL

INTERCOLONIAL RAILWAY

On and after MONDAY, JUNE 16 1907 trains
run daily, (Sunday excepted,) as follows:—

—TRAINS LEAVE STELLARTON—

No 144 Mixed for H-powell	8.55
No 79 Mixed for Trenton	8.55
78 Mixed for Hopewell	8.55
18 Express for Halifax, and St. John	7.40
21 Mixed for Pictou Landing	7.40
22 Mixed for Pictou	7.40
55 Mixed for Mulgrave	8.50
19 Express for Sydney	10.45
28 Mixed for Pictou	11.55
56 Mixed for Trenton	12.05
8 Express for the Sydney	12.05
30 Express for Halifax and Montreal	12.05
140 Mixed for Pictou	12.15
101 Mixed for Pictou Landing	12.15
22 Mixed for H-powell	12.15
65 Mixed for New Glasgow	12.15
86 Express for Halifax and St. John	12.15
17 Express for New Glasgow	12.15
66 Express for Pictou	12.15

—TRAINS ARRIVE AT STELLARTON

79 Mixed from Hopewell	8.30
78 Mixed from Trenton	8.55
61 Express from Pictou	7.30
18 Express from New Glasgow	7.30
21 Mixed from Hopewell	7.30
55 Mixed from Trenton	8.40
28 Mixed from New Glasgow	10.25
57 Mixed from Pictou	11.15
56 Mixed from Mulgrave	11.15
19 Express from Halifax and St. John	12.05
129 Mixed from Pictou	12.05
40 Express from Halifax and St. John	12.05
20 Express from Sydney	12.10
22 Mixed from Pictou Landing	12.10
71 Mixed from Hopewell	12.10
65 Mixed from Pictou	12.10
86 Express from the Sydney	12.10
66 Express from New Glasgow	12.10

All trains are run by Atlantic Standard time Twenty four
O'clock is mid-night, Montreal, N. B. June 16th, 1907

Passenger Cars between Halifax and Sydney. Dining Car
on No. 18 train between Halifax and Mulgrave, on No. 18
train between Mulgrave and South River, on No. 18 train
between South River and Mulgrave. On No. 18 train
between Mulgrave and Halifax.