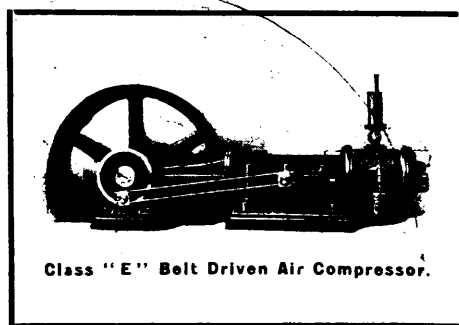


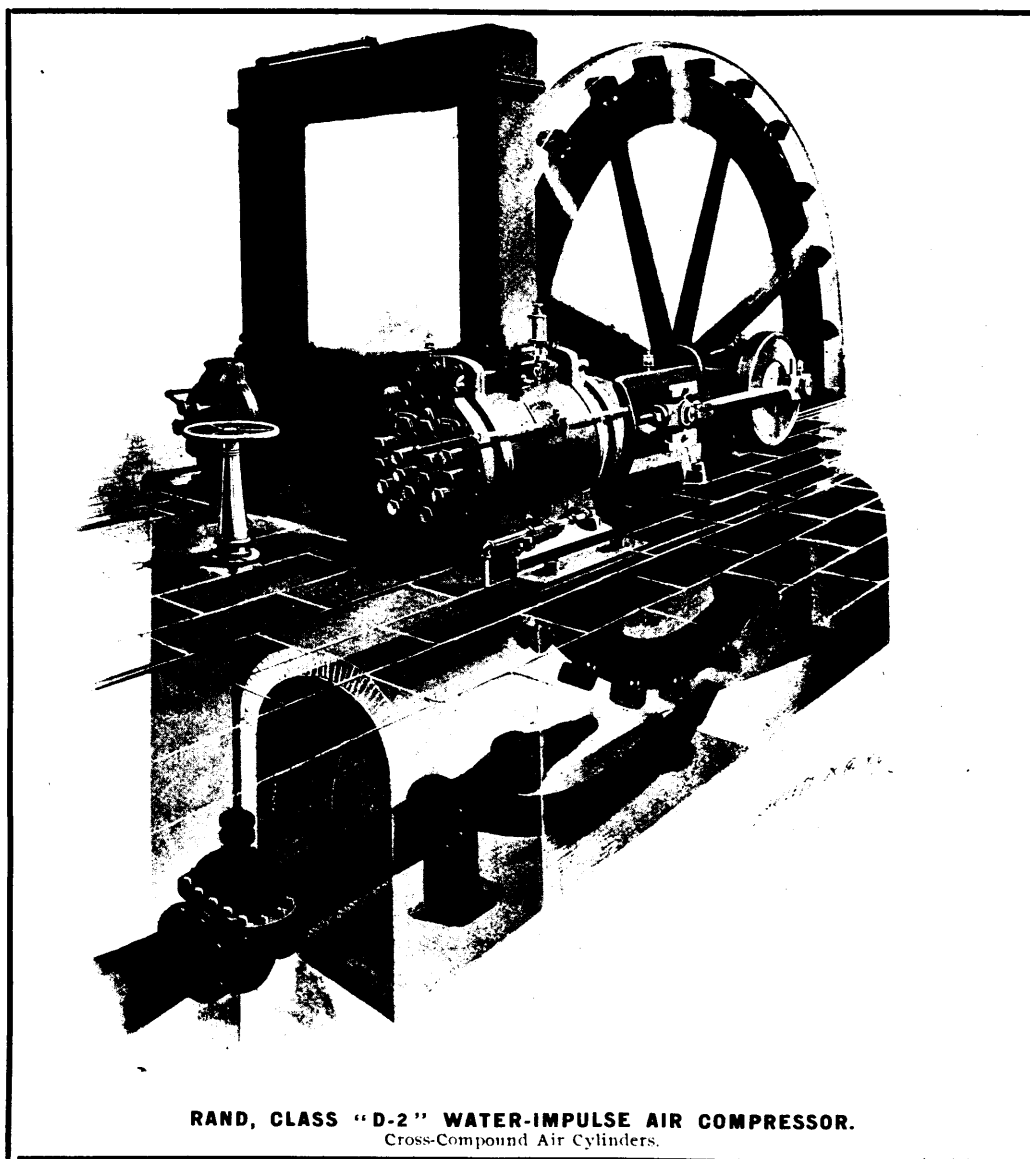
Class "G" Steam Driven Air Compressor.

UTILIZE YOUR  
WATER POWER  
TO DRIVE YOUR



Class "E" Belt Driven Air Compressor.

# AIR COMPRESSOR



RAND, CLASS "D-2" WATER-IMPULSE AIR COMPRESSOR.  
Cross-Compound Air Cylinders.

THE CANADIAN RAND DRILL CO.,  
SHERBROOKE, Que.