

FROM THE NORTH POLE TO BATTLE HARBOUR



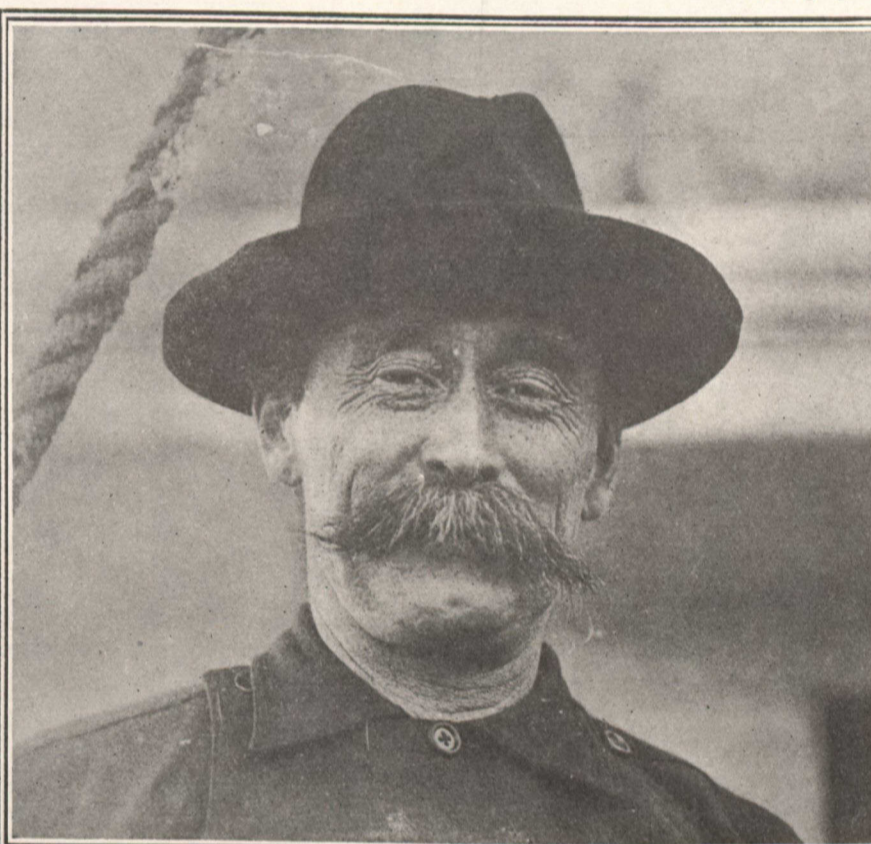
A Dog-Sled Quartette—Messrs. Donald B. McMillan and George Borup, Topographers; Mate Thos. Gushue and the Negro Hensen.



This is the whole North Pole Crew as they sat for a Canadian Photographer at Battle Harbour.



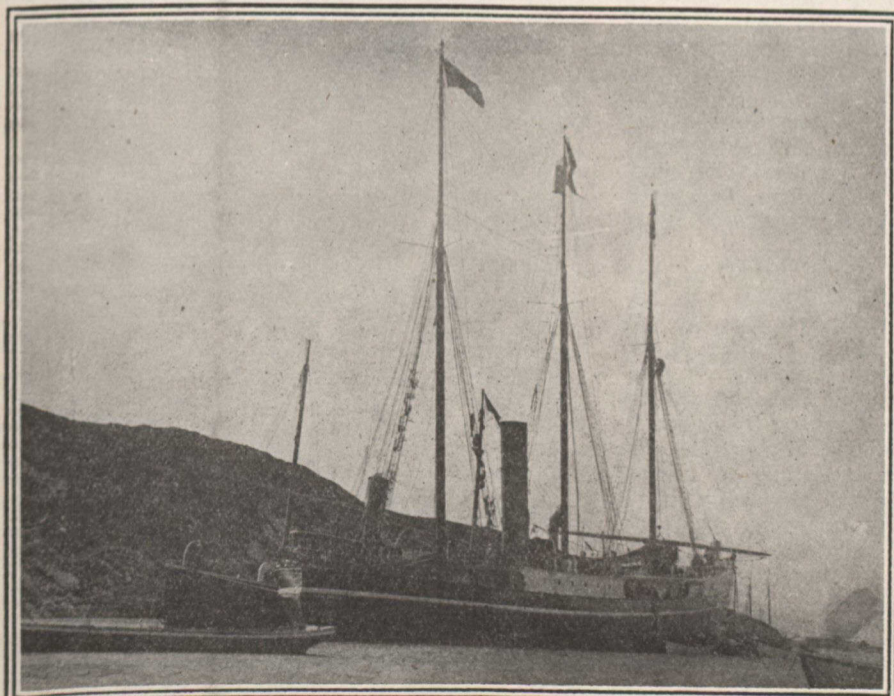
Hensen—With the Aurora Borealis Smile.



PEARY OF THE NORTH POLE



Capt. Bartlett, the Man from Newfoundland



The Ship that Carried the Crew—The Roosevelt.

Photographs by H. O. Dodge, Sydney. (Taken for the Canadian Courier at Battle Harbour.)



The Sledge in the Middle of these three Sleds is the one that went to the Pole.