



Passementerie and Chiffon Composed This Mantle.

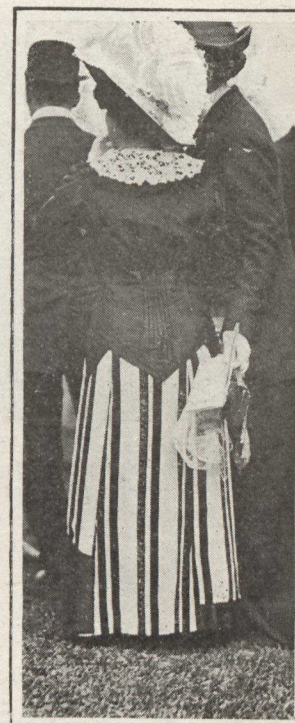


An Injudicious Wind Over-Blowled a Panniered Skirt.

ILLUSTRATING TORONTO'S ANNUAL FASHION FETE AT THE WOOD-BINE. FANFARE AND COLOUR WERE THE ORDER IN SPIRITS AND COSTUME



Tailor-mades Contributed Much Trigness.



Mrs. Smith, of New York, Was Semi-patriotic.



An Elegant Compromise with the Pannier.



Exotics, Real and Embroidered, Lent Their Charm



A Cloak that Hinted the Influence of the Durbar.



Rich Gowns Peeped from Enveloping Wraps.

H. R. H. the Duchess of Connaught and Miss Pelly.



The Rembrandt Hat A-top Appropriate Quaintness.



Mrs. Cawthra Mulock's Empire Gown.



Another View of a Charming Diaphanous Wrap.