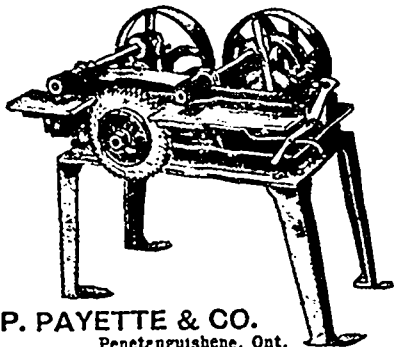


NEW PULP MILL.

THE Chicoutimi Pulp Company's mill at Chicoutimi, Que., is nearing completion. The mill will be run by water power, the turbines being furnished by the Jenckes Machine Company, of Sherbrooke, Que. The water is being carried from the top of the fall down to the power house through a steel pipe over 250 feet long and no less than 11½ feet in diameter, at the end of which are three of their celebrated Crocker turbine water wheels, one of 1,200 h.p., one of 690 h.p., and one of 450 h.p., making a total of 2,340 h.p. This does not, however, give a just idea of the magnitude of the work, which may be more readily understood when we add that were this huge pipe laid out flat it would cover a space of over 9,200 square feet; it contains over 14,999 rivets, and the whole water power equipment has an aggregate weight of more than 152,999 pounds.

It is interesting to notice that one of these water-wheels is connected directly (without the use of belts) to an electric dynamo running 500 revolutions per minute.

PAYETTE'S PATENT LATH MILL

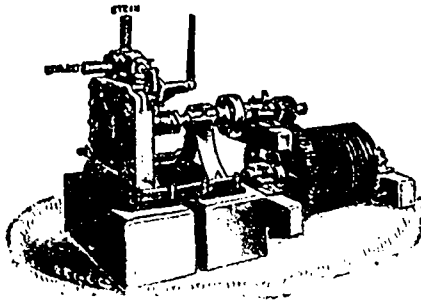


P. PAYETTE & CO.
Penetanguishene, Ont.
— SAW MILL MACHINERY —



Sole Canadian Agents: Prices Reduced.
WATERLOO, BRANTFORD, CANADA.

THE DAKE STEAM FEED



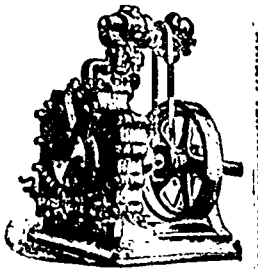
Embodies the following Advantages:
SIMPLICITY OF CONSTRUCTION,
POSITIVE AND EASY MANAGEMENT,
ECONOMICAL USE OF STEAM,
SMALL SPACE OCCUPIED,
CHEAPNESS,
EASY ADAPTATION TO EITHER NEW
MILLS OR THOSE NOW IN USE.

The movement of the engine in either direction is under the absolute control of the Sawyer, thus accommodating the speed of the feed to the size of the logs.
Mill men who have used other makes of Steam Feeds comment favorably on the economical use of steam of our feed over others.
Write for Catalogue and full particulars.

The Phelps Machine Co. - Eastman, Que.

The Dake Engine

For Running Dynamos in

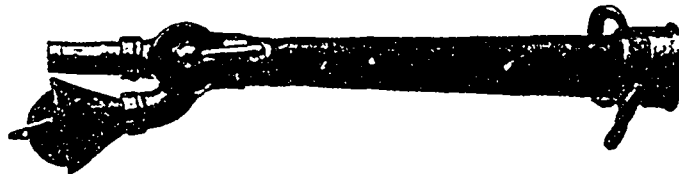


STEADY AND EVEN MOTION

Also for Attachment Direct to Fans, Blowers, Fugal Pumps, Filing Room Machinery.
Correspondence Solicited.

THE BALL NOZZLE

Highly endorsed by the Underwriters and Fire Departments throughout Great Britain and the United States, and wherever used.



No. 1. Ball Fire Nozzle (combination), Straight Stream, Spray and Shut-off, with or without Play Pipe.

BALL NOZZLES For Fire Hose, Lawn Sprinklers, Fountains, Air Distributors, Tree and Land Irrigation

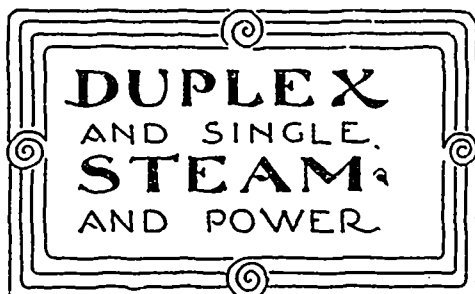
THE Ball Nozzle Company, of Toronto
— LIMITED

Offices: Room 1, Confederation Life Building, TORONTO



Pumps

& HYDRAULIC MACHINERY



The Northey Mfg. Co. Ltd.
TORONTO

THE LAURIE ENGINE CO. - MONTREAL
SOLE AGENTS FOR PROVINCE OF QUEBEC.