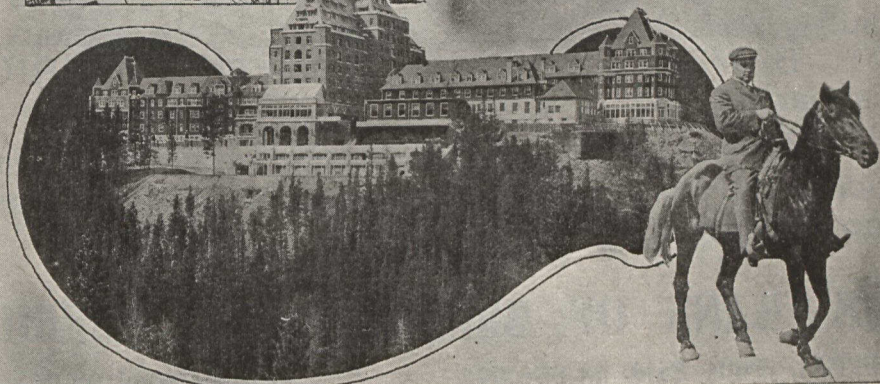


**Kill two birds
with one stone**



and travel via **THE**

CANADIAN ROCKIES

to the

PANAMA PACIFIC EXPOSITION

If you are planning your 1915 trip to San Francisco, make sure your ticket reads via Canadian Pacific, otherwise you will miss the grandeur beauty of nature's most stupendous works—The Canadian Rockies.

BANFF LAKE LOUISE FIELD GLACIER

Are important tourist stop-over points on the Canadian Pacific Railway route to the Pacific Coast. These have excellent hotel accommodation, with opportunities for riding, climbing, swimming, boating and golf.

Agents will personally call on you to arrange your itinerary.

Write, phone or call on nearest C. P. R. Representative.

E. F. L. STURDEE
Ass't. District Passenger Agent
TORONTO

M. G. MURPHY
District Passenger Agent
TORONTO