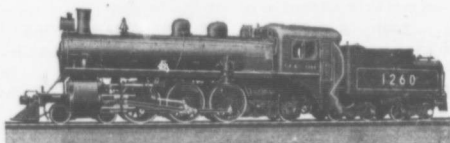


Pacific Type Passenger Locomotive

Canadian Pacific Railway



Total weight of Engine, 223,000 pounds.

Weight on drivers, 142,000 pounds.

Diameter of drivers, 70 inches.

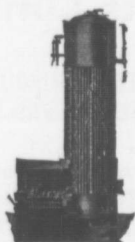
Boiler pressure, 200 pounds.

Cylinders, 22½ x 28 inches.

Maximum tractive power, 34,500 pounds.

MONTREAL LOCOMOTIVE WORKS, LIMITED

Dominion Express Building, Montreal, Canada



WICKES

Vertical Water Tube Boiler

BUILT BY

THE WICKES BOILER CO.

Saginaw, Michigan

U.S.A.

For Sale