



(Cut No. 81)

A type of implement which should be discarded. It does poor work and it requires just as much man-power to operate it as would an up-to-date five or six-section harrow, which would do three times the work.—F. C. N.



(Cut No. 82)

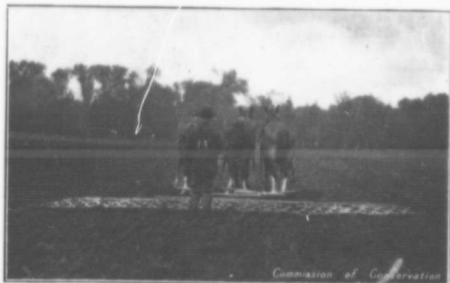
The underslung or drop-axle wagon used extensively in the Maritime Provinces. It is very handy for hauling stones, seed-grain, roots, apples, manure, etc., about the farm. On account of being low it is easily loaded and unloaded. It is made narrow in front to make turning easy. Any country blacksmith can fit up axles for such a wagon at very small cost.—F. C. N.



(Cut No. 83)

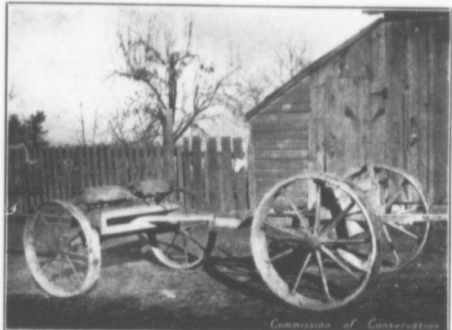
THE BEGINNING

With the exception of patches containing a few square feet, there is, on this prospective farm, no soil that approaches a loam in texture. It is mostly gravel and sand.



(Cut No. 84)

A first class outfit, with a wide sweep doing good work on a large area daily. No more man-power is needed to operate this outfit than is required for one doing a third the work. This is one way to alleviate the labour problem.



(Cut No. 85)

A handy home-made farm truck. The wheels from an old mower are utilized for the front, while a couple of old binder drive-wheels are used for the rear. Instead of allowing these to go to the scrap pile, they can be used to advantage by building a frame and fitting in axles, thus making a very convenient and inexpensive farm wagon. Try it.—F. C. N.



(Cut No. 86)

THE END

One of the many abandoned farms in the Trent Watershed. The amount of human energy expended in attempting to make a living from such areas has been, and still is, enormous.