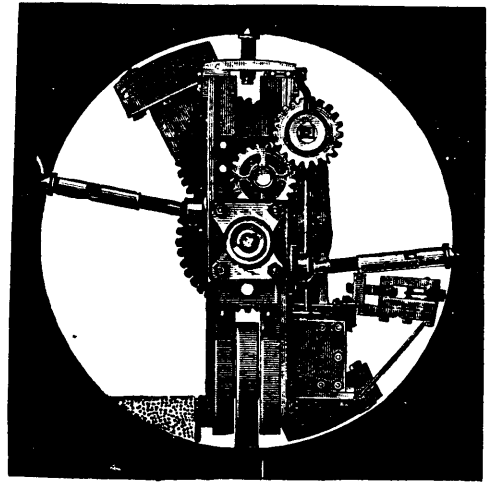
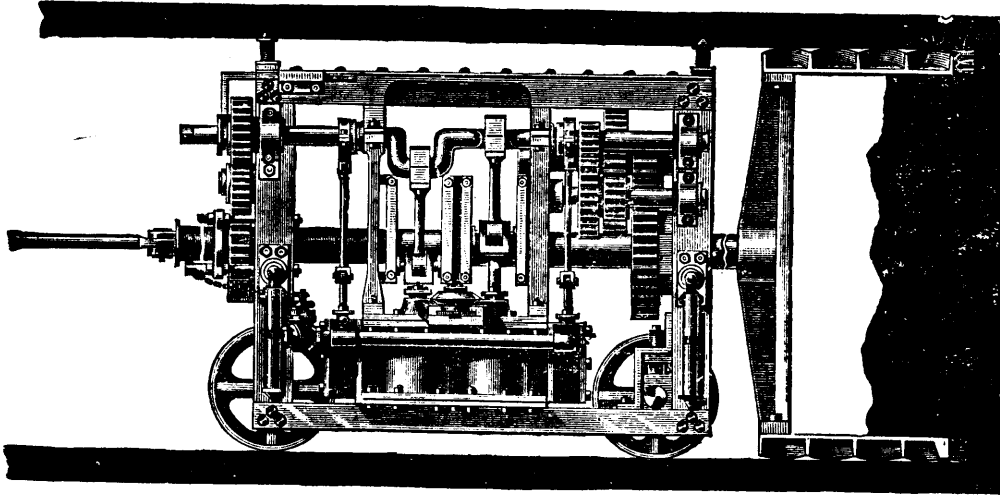


STANLEY'S PATENT COAL-HEADING MACHINES.

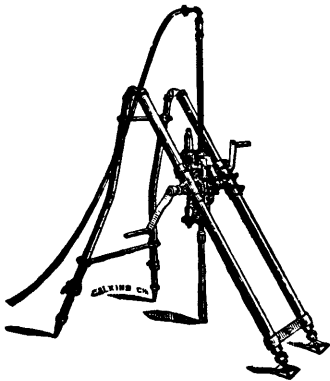
Some of the advantages as compared with hand labour are:—It greatly reduces the wages cost. Does work in one-fourth the time. Leaves much firmer roof. Economises use of timber. Renders explosives unnecessary. Ventilates its own head while tunnelling. These machines are now working at a number of collieries in England, Scotland and the Colonies; in the United States, and in several Continental countries.



Full particulars with prices and copies of testimonials, on application.

STANLEY BROS., Colliery and Engineering Works, Nuneaton, Eng.

Agents wanted in Canada for Manufacture or Sale of Machines. Liberal terms offered.



"M" Drill—Hand Power.

Capacity—300 ft. depth.

Removes 1 1/2 inches solid core.

DIAMOND DRILLS FOR PROSPECTING MINERAL LANDS.

The Sullivan Diamond Drill is the simplest, most accurate, and most economical prospecting drill for any kind of formation, hard or soft, in deep or shallow holes.

The Diamond Drill brings to the surface a solid core of rock and mineral to any depth, showing with perfect accuracy the nature, quality and extent of the ore-bearing strata, and with great saving in time and expense over any other method.

Complete stock of all sizes, driven by hand or horse power, steam, compressed air or electricity. For sale by

DIAMOND PROSPECTING CO.,

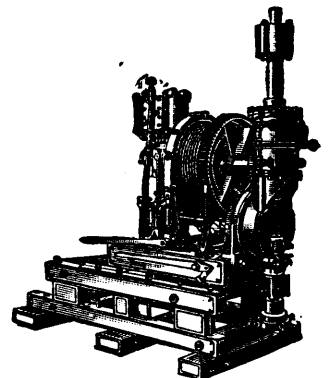
15 & 17 N. Clinton Street,

CHICAGO, ILL., U.S.A.

AGENTS FOR

Sullivan Diamond Prospecting Drills, Channeling Machines, Rock Drills, Hoists and other Quarrying Machinery.

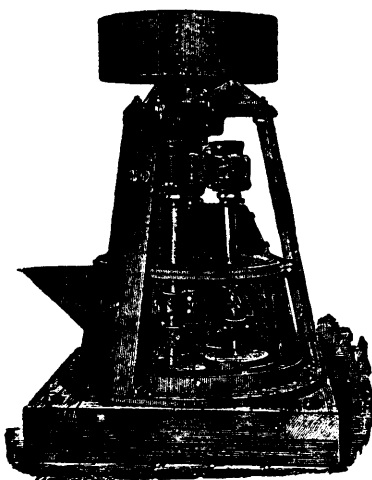
Hoisting and Hauling Engines, Cages, Triples, and other Coal Mining Machinery. Contractors for Prospecting Mineral Lands with the Diamond Drill.



"N" Drill—

Capacity—2,000 ft. depth.

Removes 1 1/2 inches solid core.



The Narod Pulverizer.

THE NAROD PULVERIZER. THE NAROD GRANULATOR.

The Pulverizer produces from 20 to 150 mesh fineness. The Granulator from size of a wheat berry to 20 mesh. Fineness determined by size mesh of screen used in mill. Both mills take from Rock Breakers and deliver a finished product.

No Tailings, No Re-grinding, No Slime. Capacity Hard Quartz 2 a 3. Phosphates, Cements, &c., 3 a 4 tons per hour. Only 15 to 20 H. P. required. Weight of each Mill 5,600 Pounds.

AMERICAN ORE MACHINERY COMPANY,

No. 1 Broadway, New York, U.S.A.

R. T. ROUTH, Canada Sales Agent,
Corn Exchange, Montreal.

(Copy.)

Wilmington N.C., Sept., 21st., 1891.
American Ore Machinery Co.,

No. 1 Broadway, New York.

Gentlemen,—In answer to your favor of recent date, I would say that after over EIGHT MONTHS' experience with the "Narod Mill" under varying conditions, I have never regretted the purchase of the one we have. I think the "Narod" is by far the best and most economical Phosphate Grinder on the market. The Mill does not take 20 horse power to drive it, runs smooth without heating, and has NEVER BROKEN DOWN. The product varies a little as to the kind of Phosphate ground, but I have not known it to do less than 3 1/2 tons per hour, and under favorable conditions the Mill grinds 4 tons per hour and will continue indefinitely.

Pieces of Iron, &c., getting in with crude material do not bother it, as is the case with most other Mills, and this I consider one of its strongest points. I THINK \$100 WOULD MORE THAN COVER THE REPAIRS FOR A YEAR.

Yours truly, C. E. BORDEN,
Supt. Navassa Guana Co.

Duncan S. MacIntyre, Hardware and Metal Broker,
RAILWAY, QUARRYMEN'S AND CONTRACTORS' SUPPLIES,
154 ST. JAMES STREET, MONTREAL.