

# Exhibits To See and Where To See Them at the Fair

## YE OLDE FIRME Heintzman & Co.

See this wonderful exhibit of high-grade Pianos and Phonographs in Main Building, northeast corner.

## See Our Exhibit In the Auto Building AT THE WESTERN FAIR ESSEX--HUDSON MOTOR CARS

### A. H. Burrows

Sole Distributor for Middlesex, Elgin, Oxford and Huron Counties.  
Some good territory left in these counties. Apply for agency at the Fair.  
23 Good Used Cars will be sold at a bargain at our exhibit at the Fair or at our showrooms.  
342 RIDOUT STREET. TELEPHONE 1414W.

## Bull Dog Brand WOODEN- WARE

Complete showing of collapsible woodenware of all descriptions, including:

IRONING STANDS  
BABY PLAY GOODS  
BABY GATES  
POINTERS,  
EXTENSION TRESTLE  
AND PLANKS  
LAWN FURNITURE,  
LADDERS, ETC.

### Be sure and see the Comfy Canopy Chair

Positively the last word in comfort and utility.

### McFarlane Mfg., Co.

208-254 Main St. Toronto.  
J. F. Cunningham, Western Rep., in charge.

## FINE EXHIBITS SHOWN AT FAIR

Useful and Beautiful Products and Inventions Crowd the Machinery Hall.

Woodworking Art Display Proves Center of Interest To Many.

Varied and comprehensive is the exhibit of the McFarlane Manufacturing Co., Ltd., of Toronto, in the Machinery Building. Beautiful specimens of the woodworkers' art as applied to outdoor furniture, embracing such articles as chairs, garden seats and benches are shown, as are also stepladders, clothes racks, washboards and ironing boards. One article of which there were many varieties, was the sleds. Judging by the evident longing and interest shown by the crowds of children around this display, sledding on McFarlane and Company sleds this winter will be a popular pastime after school hours.

**LONDON-MADE CORNFLAKES**  
Cleanly, almost hunger-producing in its attractiveness is the exhibit of the Battle Creek Toasted Cornflakes Co., London Ont., in the Pure Food Building. Displayed around the booth are packages of the product, interspersed with ferns and chrysanthemums. Judging by the crowds of eager, expectant children around the booth, every one, especially the children, must know how good the London-Made Cornflakes are.

**ELECTRIC WASHERS SHOWN.**  
The Knowles Electric Washers were of particular interest to numerous mothers Monday, as they will undoubtedly be during the remainder of the Exhibition. The interesting demonstrations of the exclusive features of the different machine features shown, as well as the general working principles involved, drew large and appreciative audiences Monday. Featured in the display is an Ironing Machine with a ventilated shoe. Mr. Knowles, who controls the rights, and is in charge of the exhibit, is a London man, and the machines are made in London.

**RADIO AT THOMAS EXHIBIT.**  
Flying fingers take the place of flagging feet in the significant motto of the Thomas Furniture Exhibit, in the Machinery Building, and the models of Sellers' kitchen cabinets displayed comprise styles finished in

white, gold, and oak, and embody the famous Sellers features. In connection with this display, the Gerald brothers of London have installed a radiophone from the M. S. L. Radiophone Corporation, St. Thomas, and daily concerts from the various broadcasting stations on the continent will be greatly enjoyed by visitors to the Fair.

**HEINTZMAN EXHIBIT PLEASURES.**  
Some particularly striking displays feature the exhibits at the Western Fair. A very striking booth is that of Heintzman & Co., in the Crystal Palace, in which are shown Heintzman & Co. grand pianos, players and Weber pianos.  
Mr. Windsor, who is in charge of the exhibit, has a well-arranged and very prettily decorated booth, some vases of gladioli helping to complete the attractive appearance of the exhibit. Shown also are Victor, Brunswick, McLagan and Sonora phonographs in various styles and sizes.

**CITY GAS BOOTH ATTRACTS.**  
The City Gas Company booth, also in the Crystal Palace, is at once both an attractive one, and one that will bring inspiration to the housewives who visit the Fair. Numerous styles of gas ranges are shown, and considerable interest is being taken in the heaters, which promise to be in demand the coming winter.

**RAW PAINT MATERIALS.**  
In the Machinery Building, which was crowded Monday, the displays are varied and interesting. One that seemed to attract more than ordinary interest was that of Scarfe & Co. Paints and varnishes, while always interesting, have an added touch of interest when seen in the early stage of manufacture.

Raw materials, consisting of gums from New Zealand, Straits Settlements and Africa, are exhibited, as well as oils from Canada, United States and China. The rough shellac from Bengal district, India, is also of interest. Some interesting samples of varnish finishes, and the new system of dull, finishing walls to take the place of wallpaper, adds to the attractiveness of the exhibit.

**HUDSON CARS SHOWN.**  
Among the many attractive automobile displays, the new Hudson Super-Six was the recipient of much complimentary attention Monday. Mr. Burrows pointed with special pride to the seven-passenger Sedan, a new car on the market, luxurious in appearance, and powerful, yet so simple in operation that women can drive with the least possible effort. Prominent in the exhibit, and attracting much favorable attention is the new Essex Coach, which gives motorists closed car comfort with  
Turn to Page 13, Column 3.

## Ideal Aluminum Products, Ltd.

TORONTO, ONTARIO

THE IDEAL KITCHEN  
is Fitted with

## 'IDEAL' Aluminum Cooking Utensils

Made of 99% Pure Aluminum  
Imperial measure—guaranteed for 25 years.

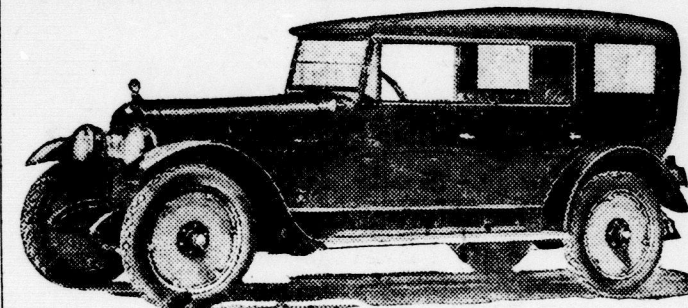
Each utensil of which has been carefully tested by experts and the right weight and gauge determined in order to insure the maximum of service with the minimum of cost, with the result that they are unsurpassed in quality, beauty and workmanship. See exhibit at the Fair. Special sale for 2 weeks at Kingsmill's, also Ingram & Davey, St. Thomas. Made for Canadians by Canadians.

Ask for Demonstration of  
"METAL MENDIT"

Is highly recommended, and is rapidly becoming a household necessity in every home. You can use it with ease in repairing pots, pans and other cooking utensils, water pipes, tanks, troughs, steam pipes, boilers, radiators, auto parts, etc. Ask your dealer for it.

Sole Distributors  
IDEAL ALUMINUM PRODUCTS  
COMPANY.

Toronto Ontario



London Six—Supreme Touring

## The Model That Is Making London Motors Famous

This is Your Opportunity to See Four Models of Canada's Quality Car.

LONDON MOTORS, LIMITED

## WE MAKE IT EASY TO BUY A GAS RANGE

THE NEW, IMPROVED TYPES OF  
CABINET GAS RANGES

are all that can be desired in the matter of economy and convenience, and are built for years of perfect service. GAS IS THREE TIMES AS FAST AS ELECTRICITY and has 70 Years' uninterrupted service behind it.

### Beautiful Cabinet Gas Ranges

From \$56—\$5 Down and  
From \$56—\$5 a Month.

Connections and Touch-a-Button Lighter Free.  
Smaller Ranges From \$28.00—\$4 Down and \$4 a Month.  
Look Them Over at the Western Fair, Main Building.

CITY GAS COMPANY OF LONDON  
Commercial Department, 213 Dundas St. Phone 835.

## The Modern Way To Wash Is by Electricity



Made by one of  
Canada's Oldest  
Laundry  
Machinery  
Manufacturers

The Knowles Electric Ironer is simplicity itself. There are no parts to get out of order. It is made in sizes ranging from 30 to 44 inches, with a 6-inch ironing surface. This ironing surface is designed to turn out the goods absolutely dry. No other make has this ventilating feature.

Free Demonstration in Your Home Without Obligation to Purchase.

## KNOWLES

Phone 1883-W.

1-7 HIGH ST., LONDON.

## KNOWLES, LONDON

The weekly task happily performed—the back-breaking drudgery of the wash-board no longer exists—in the home where KNOWLES reigns supreme.

Electricity and the KNOWLES WASHER have taken the "blue" out of Monday—they have prevented many wrinkles.

Now, while the improvements of your home are being considered, is the time to investigate—KNOWLES EQUIPMENT—the washing and ironing conveniences that are making child's play of those household tasks.

See Our Exhibit in  
Machinery Hall  
at Western Fair.

## An Invitation

Dear Sir—You are cordially invited to call and see our display at the Western Fair. We are located in the Transportation Building, southeast corner.

We have new automobile necessities, which no car owner should be without. We also have a wonderful big showing of advertising systems of all kinds of novelties and calendars. We are prepared to give you prompt delivery, if necessary.

See Shoar-Patch, Clean E-Z Prime Spark Plug, the new Auto Mat, Stickalite Trouble Lamp, sticks any place on your car.

## WESTERN ONTARIO SELLING AGENTS

7 Front Street East, Toronto.

## FAIR VISITORS Do Not Miss This

## SOMETHING NEW IN HEATING NOT A STOVE

A beautiful ornament for living-room, looks like a costly mahogany cabinet; works on principle of furnace,

## At Our Exhibit

Just inside door, Stove Building, Western Fair. Ask for it. Let us explain it. You will be delighted and surprised.

Made in Canada by

## HAMILTON STOVE AND HEATER CO.

Exclusive Agents

## Wyatt Furniture Co.

349-351 Talbot Street, between King and York. Phone 7082.

## VISIT OUR EXHIBIT AT FAIR AND SEE OUR DISPLAY

We are agents for James Stewart Manufacturing Company. In Stove Buildings we have a beautiful and complete line of Stoves and Furnaces. Best that can be made. See them and get prices before buying. It is a pleasure to show goods.

We are agents for COLEMAN QUICK LIGHT. This lamp and lantern is perfectly safe, guaranteed. Call and see them at store or at Stove Building, Exhibition.

We are agents for Frost Fence. This is a fence we are proud to be agents for. It speaks for itself. Call and see, and get prices. We have all kinds.

STANDARD PAINT CO.—We are agents for. We are showing SOLVENT STAIN at Stove Building, Exhibition. Call and see beautiful finish on wood. We carry full line of Paints.

## W.A.O'DELL Hardware

389-393 TALBOT ST., OPP. MARKET.

PHONE 187.

## THE ATTRACTION of THE FAIR

## A Credit to Thomas

They say eavesdroppers never hear any good of themselves—but to all rules there's always an exception as in this instance. The above remark was made by one lady to another and overheard by our attendant at our exhibits of

## SELLERS' Kitchen Cabinets AND Scarfe's Products

AT THE SELLERS EXHIBIT

the first fifteen famous Sellers features are fully demonstrated, showing how flying fingers can take the place of flagging feet.

ORANGE AND BLACK

(Scarfe's Colors) and this exhibit is tastily decorated in these colors—a feature of this exhibit is a display of raw materials used in the manufacture of their varnishes.

Then there's the RADIO PHONE—don't miss hearing it at the Sellers Kitchen Cabinet Exhibit.

## THOMAS

PHONE 5616.

240 DUNDAS STREET.

## Invitation

WHILE in London attending the Western Fair, we take this opportunity of extending to you a special invitation to visit the large, magnificent plant of the Kellogg's Toasted Corn Flakes, just a few blocks east of the Fair Grounds Entrance on Dundas street. Closed at noon Saturday. Insist and demand. Get the London-Made Brand.

## KELLOGG'S

LONDON, ONTARIO.

## Don't Miss the New MITCHELL MOTOR CARS NOW ON EXHIBIT AT THE WESTERN FAIR

W. C. Morrison  
Distributor,  
174 FULLARTON ST.  
PHONE 1871J.

Park Your Cars at Morrison's Garage.

WHAT THE NEW F-50  
MITCHELL DOES

Throttles to 1 mile per hour in high and accelerates suddenly to wide open throttle, without bucking or jerking!

Accelerates in high gear from 5 to 30 miles per hour in 10 seconds; 1 to 40 miles per hour in 20 seconds.

Will turn a complete circle in a 22-foot radius.

The F-50 Motor develops real pulling power at speeds as low as 67 r.p.m. The average engine begins to pull only above 300 r.p.m.