

THE safest, surest way to insure good lubrication for your tractor is to buy

**Polarine**  
FRICTION REDUCING MOTOR OIL

Buy it direct from our tank stations in steel barrels and save money on first cost, and in freedom from leakage. Polarine will end your lubrication troubles.

Buy Gasoline and lubricants under the Premier "Red Ball" sign.



Supplied in two grades—Polarine and—Polarine Heavy.

THE IMPERIAL OIL COMPANY

Limited

BRANCHES THROUGHOUT CANADA

Organized, Owned and Operated by Farmers

Implements and other Farm Needs Supplied for Farmers direct from Factory

Live Stock Handled on Commission

Grain Purchased on Track or Handled on Consignment

**The Grain Growers' Grain Co. Ltd.**

Branches at REGINA, SASK. CALGARY, ALTA. FORT WILLIAM, ONT.

Winnipeg - Manitoba

Agency at NEW WESTMINSTER British Columbia

**MACLENNAN BROS.**

Track Buyers GRAIN Commission Merchants

LICENSED, BONDED | NOT MEMBERS

Under the Canada Grain Act | Of the Winnipeg Grain Exchange

**INDEPENDENT**

On request we will Wire or Phone Higher Prices than any competitor for grain of any kind, for shipment to, or in store either Government Interior or any Terminal Elevator, and will make Highest Cash Advance to shippers who sell, or who wish to hold their grain.

705 Union Trust Building, Winnipeg

**LIVE POULTRY WANTED**

All prices which are quoted below are absolutely guaranteed for 15 days from date of this paper, and are for live weight f.o.b. Winnipeg.

Turkeys	Per lb. 18c	Old Roosters	Per lb. 11c
Hens	" 15c	Geese	" 18c
Young Roosters	" 14c	Ducks	" 18c

Let us know what kind you have and how many you have for sale and we will forward enough crates for shipping.

**EGGS 22c PER DOZ. F.O.B. WINNIPEG**, cases returned. If you have not any cases, let us hear from you and we will forward you 30 dozen size.

Our terms are cash—Bank Money Order—on receipt of goods.

**GOLDEN STAR FRUIT & PRODUCE CO. - WINNIPEG, MAN.**

**YOUR Opportunity to get a High-Class Automobile FREE!**

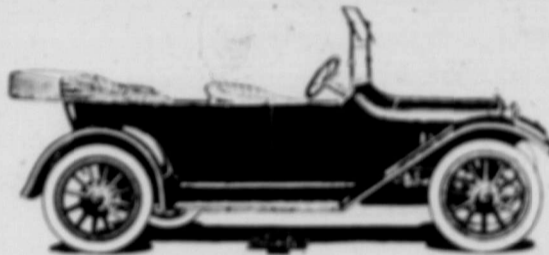
**How to Win the Car**

Every man and woman, boy and girl who reads the Canadian Thresherman and Farmer is heartily invited to enter our "Wheat Estimating Contest." The competition is open to everybody in Western Canada who complies with the rules and all who enter have an equal chance to win the car. Think what pleasure you could have touring the country with this beautiful, speedy and comfortable automobile. Someone will get it—why not you?

We will present this handsome "Chevrolet" automobile (1916 model) to the best reader of the Canadian Thresherman and Farmer who estimates nearest to the number of Whole Kernels in Three and One Quarter Pounds of No. 1 Northern wheat between 1st April, 1916, and 31st July, 1916. The contest is open to every home-fide farmer in Canada, except residents of Winnipeg. This \$725 car is all complete with Electric Starter and Lights, Mohar Top, Windshield, Ammeter, Speedometer, Tools, etc., and will be delivered to the winner F.O.B. Winnipeg. The car is on view in this city now and may be seen at any time.

Contest closes July 31st, 1916

Don't let this opportunity slip by—it means too much to you. Send us your estimates now, when the chance is before you.



Someone will win this Car—You can be the lucky person.

**Estimates will be accepted as follows:**

- 1 year's subscription at \$1.00 gives you 3 estimates
- 2 years' subscription at \$1.50 gives you 7 estimates
- 3 years' subscription at \$2.00 gives you 11 estimates
- 4 years' subscription at \$2.50 gives you 15 estimates
- 5 years' subscription at \$3.00 gives you 19 estimates
- 6 years' subscription at \$3.50 gives you 23 estimates
- 7 years' subscription at \$4.00 gives you 27 estimates
- 8 years' subscription at \$4.50 gives you 31 estimates
- 9 years' subscription at \$5.00 gives you 35 estimates
- 10 years' subscription at \$5.50 gives you 40 estimates

Note—By taking out a subscription for more than one year you may the benefit of a lower rate in addition to increasing your chance of winning the car by receiving more estimates. Subscribers who have already renewed their subscriptions may also enter the contest—their subscriptions being extended from the date they are due to expire.

Contest closes July 31st, 1916

**About the Wheat**

The wheat is a fair, clean sample of No. 1 Northern obtained from the Dominion Grain Inspector at Winnipeg. The wheat and bottle were taken to the Dominion Weights and Measures' Office and exactly three and one quarter pounds were weighed and poured into the bottle, which was immediately sealed up in the presence of two witnesses. The bottle was then photographed and deposited with the Union Trust Company, Winnipeg, and will remain in their custody until the contest closes, July 31st, 1916, when it will be taken out and counted by a board of three judges, none of whom are in any way connected with the Canadian Thresherman and Farmer.

Everyone who sends in a year's subscription for the Canadian Thresherman and Farmer, either new or renewal, is entitled to estimates as explained. These estimates may be credited in whatever way desired, and you may send in as many estimates as you wish. Remember every additional estimate increases your chance to win the automobile. Estimate early and increase your chance of winning for it is the best one that estimates nearest to the number of whole kernels that wins the car. Don't be afraid to try. One kernel if only win you the grand prize. For further particulars see April 12th issue of this paper, or write to the E. H. Heath Co. Ltd., Winnipeg.



This is a photograph of the actual bottle of wheat after it had been weighed and sealed. The car shows it very much reduced in size.

Address all communications to:

**E. H. HEATH CO. LTD.**  
Winnipeg - Canada

E. H. Heath Co. Limited, Winnipeg

Please send enclosed \$\_\_\_\_\_ for \_\_\_\_\_ years' subscription for the Canadian Thresherman and Farmer to be sent to

Name \_\_\_\_\_

Address \_\_\_\_\_

Prof. \_\_\_\_\_

My estimates as to the number of whole kernels in 3 1/4 lbs. No. 1 Northern Wheat are

If more space is required for names and estimates, use a blank sheet and attach securely to this coupon.