

"ST. AUGUSTINE"

Registered
The Perfect Invalids' & Communion Wine.
"St. Augustine" is a sound pure wine, better cannot be obtained.
Rev. Canon Dann.
Cases 12 Qts. \$4.50 : 24 Pts. \$5.50 F. O. B. Brantford.
J. S. HAMILTON & Co. - Brantford
Manfrs. and Pro. "St. Augustine" Wine

Telephone - - Main 7405

We are equipped to produce Printing Matter that will attract attention anywhere.
Our prices are inducing and should attract the shrewd business man—try us.

The Monetary Times Printing Co., of Canada, Limited

62 Church St., Toronto, N.-W. Cor. of Court St.



MENEELY BELL CO
TROY, N.Y. AND
177 BROADWAY, N.Y. CITY.
BELLS



CHURCH AND MEMORIAL WINDOWS
STAINED GLASS
Designs and estimates submitted
LUXFER PRISM COMPANY LIMITED
100 King St. West Toronto

ALEX. MILLARD
Undertaker and Embalmer
359 Yonge Street, TORONTO
Telephone Main 679



CHURCH BRASS WORK of every description made to order on shortest notice. Designs furnished and satisfaction guaranteed.
KEITH & FITZSIMONS, LIMITED
111 King Street West, Toronto

On Time

all the time. Service as good as the ice itself.

Order

Belle Ewart Ice

and get full value

Telephone Main 1947

Belle Ewart Ice Co.
37 YONGE STREET.

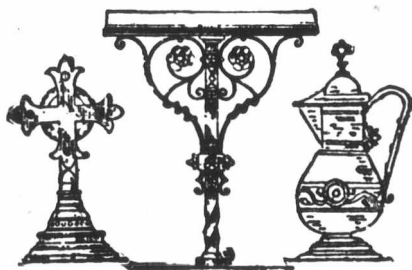


GOLD MEDAL FOR ALE AND PORTER
AWARDED

JOHN LABATT
At St. Louis Exhibition, 1904.
Only Medal for Ale in Canada.

P. BURNS & CO.

WHOLESALE AND RETAIL DEALERS IN
COAL AND WOOD
HEAD OFFICE: 49 King Street East, Toronto
ESTABLISHED 1856. TELEPHONE 181 AND 182
Office and Yard, FRONT ST. near BATHURST. Telephone No. 449 and 2110
Office and Yard, PRINCESS STREET DOCK. Telephone No. 190



EAGLE AND RAIL LECTERNS

Altar Rails, Crosses, Vases, Desks, etc., Candlesticks, Vesper Lights, Memorial Brasses, Chandeliers, and Gas Fixtures, Communion Services, made or refinished. Electrical Contractors
CHADWICK BROS.
Show Room 19 East King St. Hamilton
Factory, Oak Avenue, near Barton St.
Send for Catalogue

DANIEL STONE
UNDERTAKER

82 West Bloor St. Telephone North 368



The Quickest Route TO **Muskoka**

The centre of the Muskoka district reached direct by the Lake Shore Line. Boatside stations at Bala Park and Lake Joseph.

THE LAKE SHORE EXPRESS
(Trains 3 and 4)

A magnificently equipped solid vestibule train, observation parlor cars and coaches de luxe.

In appointment, in a class by itself.

Three trains every week day:

8.00 a.m. 10.00 a.m. 5.15 p.m.

Providing the comfortable way to visit

Beverton, Sparrow Lake, Muskoka Lakes, Parry Sound, Georgian Bay, the Magnetawan Country, Pickering and French Rivers.

Ticket Offices corner King and Toronto Streets and Union Station.

MENEELY & CO. WATERYLIET, (West Troy), N. Y.
The Old Reliable Men's Foundry, established early 170 years ago.
CHURCH, CHIME, SCHOOL, & OTHER **BELLS**

When writing to or purchasing from Advertisers mention "The Canadian Churchman."

The **Testimony of Science to the Credibility of the Book of Jonah**

A VINDICATION OF THE NARRATIVE OF HIS ADVENTURE WITH THE WHALE

By **Rev. J. W. BEAUMONT, D.D., M.D.**

In Pamphlet Form, Price Five Cents.

Canadian Churchman Office
36 Toronto Street, Toronto, Ont.



Make Walking Easy

Feels like Brussels carpet on the pavement when you wear Dr. A. Reed's cushion shoes.

\$5 and \$6.

BLACHFORD
114 YONGE ST.

PERSISTENT POLICYHOLDERS

Some 20,000 Policyholders carrying over \$2,000,000 of Insurance have concluded that they could not do better than secure protection in The Great-West Life.

It is clear that more intimate acquaintance strongly confirms their good opinion - since The Great-West Life is surpassed by only one other Company (and that doing a small business) for the PERSISTENCY of its Business.

Obtain particulars of these favored Policies. Lowest rates - highest profits.

THE Great-West Life Assurance Company
HEAD OFFICE, - WINNIPEG

LINENS

No investment that can be made will produce greater dividends in immediate pleasure and future satisfaction than Household Linens for the bride, bearing the Catto label.

Aside from its intrinsic value their linens have the distinction of representing the perfection of the weaver's art.

The careful and prompt attention to Mail Orders is a feature of their establishment.

JOHN CATTO & SON
55-61 King Street East, TORONTO

CHURCH-FURNITURE

Altars, Pulpits, Fonts, etc.
Send for Catalog of Pewes & Brass Goods
The Bluff Lumber & Mfg. Co. Limited.
- Chatham, - Ont. -

WHITE STAR--DOMINION

CANADIAN SERVICE
Royal Mail Steamers
Montreal--Quebec--Liverpool
WEEKLY SAILINGS

R.M.S. LAURENTIC R.M.S. MEGANTIC
14,892 tons Triple screw 14,878 tons Twin screw
Largest and most modern steamers on the St. Lawrence route. Latest production of the shipbuilder's art; passenger elevator serving four decks. Every detail of comfort and luxury of present day travel will be found on these steamers, including orchestra. They proved very attractive last St. Lawrence season, owing to their superb accommodation for First, Second and Third Class passengers.

MODERATE RATE STEAMERS
R.M.S. CANADA R.M.S. DOMINION
One Class Cabin Steamers (called Second Class)

On these Steamers passengers receive the best the Steamer affords at a moderate rate, they are very largely patronized by those making a trip to the Old Country, who wish to secure comfort at a moderate expenditure.

Intending travellers are requested to communicate with Local Agents regarding passage on the above mentioned Steamers, or to Company's Offices.

TORONTO WINNIPEG
41 King Street East 205 McDermot Ave.
MONTREAL, 118 Notre l'ame Street, We.

BELLS.

Steel Alloy Church and School Bells. Send for Catalogue The C. S. BELL CO., Hillsboro, O.