

MUNICIPAL ENGINEERS, CONTRACTORS AND MATERIALS

**DEBENTURES BOUGHT**

Municipalities saved all possible trouble by applying to

**G. A. STIMSON & CO.**

Investment Dealers

14 and 26 King St. W. - TORONTO

**ARTIFICIAL STONE PAVEMENTS**

**SIDEWALKS A SPECIALTY**

**CORPORATIONS** Will do well to consider our work and prices before letting contracts

The Silica Barutic Stone Company of Ontario, Limited.

WALTER MILLS, General Manager. Head office: INGERSOLL, ONT.

**THE HERCULES CULVERT CO.**

Manufacturers of

Portland Cement

Culvert Pipe

Culvert Arches

ROG-TROUGHS, CURBING, Etc., and GENERAL CONTRACTING AND SUPERVISION of all CEMENT AND CONCRETE STRUCTURES. Guaranteeing permanence and satisfaction. For Prices, Estimates and Further Particulars write . . .

The Hercules Culvert Co. - HAMILTON

**Paving Granite**

Granite Sets for Street Paving. - CURBING cut to any shape ordered. - Fine Rich Colors for Building and Monumental Purposes.

Quarries, St. Philippe d'Argenteuil, P. Q.

Address all communications to

**JOS. BRUNET - COTE DES NEIGES, MONTREAL**

Flush Your Sewers with

**THE MILLER AUTOMATIC SYPHON**

(PATENTED)

Received HIGHEST AWARD at the World's Columbian Exposition for

- (1) SIMPLICITY OF CONSTRUCTION.
- (2) EFFECTIVENESS. (3) RELIABILITY.

Write for Prices and Particulars.

**VICTOR HILL, General Agent,**

Bewson Bldg. Box 245. NIAGARA FALLS, ONT

**WILLIS CHIPMAN**

Hon. Grad. McGill University.

M. Can. Soc. C.E. M. Am. Soc. C.E.

Mem. Am. W.W. Ass'n.

**WATERWORKS, SEWERAGE WORKS, GAS WORKS, ELECTRIC LIGHT AND POWER PLANTS**

Reports, Surveys, Construction, Valuations

103 BAY STREET - TORONTO

**RODERICK J. PARKE**

Consulting Electrical Engineer

MUNICIPAL ELECTRIC LIGHTING COMMERCIAL POWER INSTALLATIONS

Isolated Electric Lighting and Power Plants for Manufactories. Estimates, Specifications, Advice on Tenders. Valuating

310 Temple Building - TORONTO, CANADA

**VAUGHAN M. ROBERTS**

Civil and Sanitary Engineer

Waterworks Sewers, Electric Light, Electric Railways

Plans and Specifications prepared. - Work Superintended. 18 Ontario Street, ST. CATHARINES

**W. T. ASHBRIDGE, C.E.**

A. M. CAN. Soc. C.E.

809 Temple Building, - TORONTO

Special Attention given to

**MUNICIPAL IMPROVEMENTS**

Sewerage Works, Water Supply, Pavements, Concrete Construction, Etc.

**THE PHOENIX BRIDGE & IRON WORKS**

MANUFACTURERS OF STAY BOLTS AND ALL KINDS OF RIVETS

STEEL AND IRON STRUCTURAL AND ARCHITECTURAL WORK

Beams, Channels, Angles and Tees always in stock.

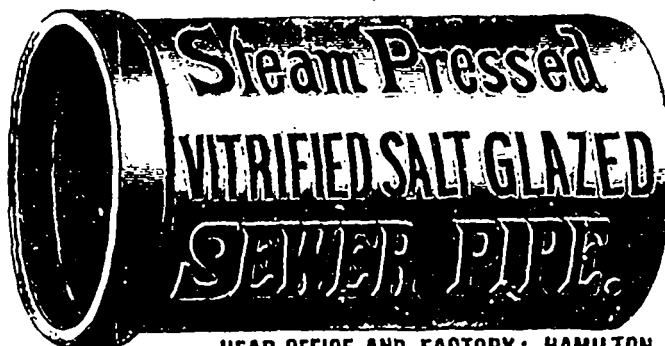
29 to 49 McGill Street,

P.O. Box 893.

Prices on Application.

MONTREAL

**THE HAMILTON AND TORONTO SEWER PIPE CO. (LIMITED.)**



- FOR -

SEWERS,

CULVERTS

AND

WATER PIPES.

**INVERTS**

For Brick Sewers

Write for Discount

HEAD OFFICE AND FACTORY: HAMILTON, CANADA

**THE STANDARD DRAIN PIPE CO. OF ST. JOHNS, P. Q., (LIMITED)**



Manufacturers of

Salt-Glazed

Vitrified

**SEWER**

**PIPES**

Double Strength Railway Culvert Pipes, Inverts, Vents,

AND ALL KINDS OF FIRE CLAY GOODS

**ENSIGN SILICA PORTLAND CEMENT**

For Sidewalks, Pavements, Heavy Masonry and Concrete.

Write for our "ENSIGN" pamphlet, which gives tests, guarantee and other information.

**THE RATHBUN COMPANY** DESERONTO, ONT.

**THE CADWELL SILEX STONE CO'Y SILEX STONE**

WALKS CURBINGS } A SPECIALTY

TO CORPORATIONS. - We can give you the benefit of our ten (10) years' experience in building our Silex Stone Walks.

C. W. Cadwell, Manager, Windsor, Ont.

Please mention the CONTRACT RECORD when corresponding with advertisers.

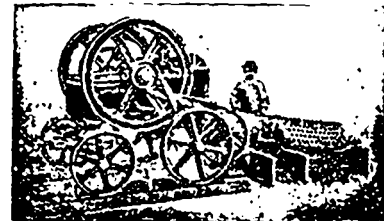
**THE JENCKES MACHINE CO.**

31 Lansdowne Street - SHERBROOKE, QUE.

ORE AND STONE CRUSHERS HOISTING MACHINERY RAILWAY SUPPLIES BOILERS AND ENGINES

Prices furnished on application

**MARSH & HENTHORN,** BELLEVILLE, ONT.



Builders of

**STONE AND ORE CRUSHERS** and Macadamizing Machinery.

Complete Plants Planned and Erected. Write us for Catalogue of Crushing Machinery, and Prices, stating requirements.