

Miners Wanted To Chew BULL DOG TOBACCO,

Because it is the only Tobacco
which does not excite **Thirst**
for Water after using
TRY IT!

The St. Lawrence Tobacco Co., Ltd.
—Montreal—

—W. B. Reynolds, Halifax Representative—

MINING SHOVELS

our 'FENERTY' Brand

COOK'S PAN SHOVELS,
COAL TRIMMERS SHOVELS,
SCRAPER SHOVELS, ETC.

—ARE USED BY—

The Largest Mines in Canada

MANUFACTURED BY

The HALIFAX SHOVEL Co.

HALIFAX, N. S.

ALL GOODS GUARANTEED.

Genuine Garlock Packings
FOR ALL PURPOSES.

**Pipe and Boiler Coverings,
ENGINEERS SUPPLIES.**

also

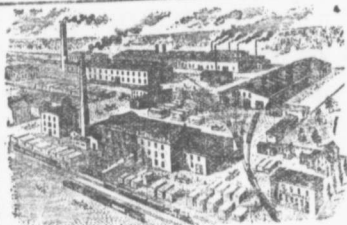
"Tauril" High Pressure Jointing
the Best Sheet Packing yet
Produced.

THE GARKOCK PACKING CO.
HAMILTON, ONTARIO.

Used by Collieries in Lancashire, Staffordshire & Yorkshire

'**XTERRA**' COLLIERY LAMP OIL
For Marsault, Muesels Deflector or Closed Lamp.

PURE WHITE FLAME. LOW PRICE.
E. WOLASTON, Dutton St. **MANGHESTER**
Sole Representatives for Canada, AUSTEN BROS.,
Halifax, N. S.



—MANUFACTURERS OF—

RAILWAY
STREET and
MINING

CARS,

CAR WHEELS Church Pews.
FORGINGS & Fittings for Stores, Schools &c.
CASTINGS A SPECIALTY.

Large Stocks of Foreign and Domestic Lumber on Sale.

Rhodes, BUILDING MATERIALS
GENERAL.

Curry & Co., Ltd.

Branch
BOBBIE STREET
HALIFAX, N. S.

AMHERST N. S.

INTERCOLONIAL RAILWAY

THE

MARITIME EXPRESS

Is the

Most Comfortable Train

in Canada.

Connecting Train
leaves Stellarton 15,05

—FOR—

Quebec and Montreal.

Dining
Car
Service

Breakfast 75c.
Luncheon 75c.
Dinner \$1.00

Direct connections at Bonaventure Union Station,
Montreal, with Grand Trunk Railway trains for all
points in Ontario and the West.

—and to—
DETROIT, BUFFALO, NIAGARA FALLS
AND CHICAGO.